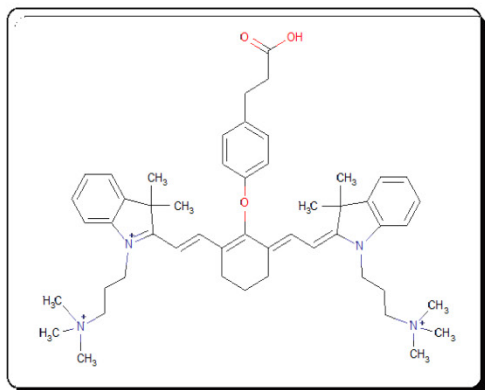


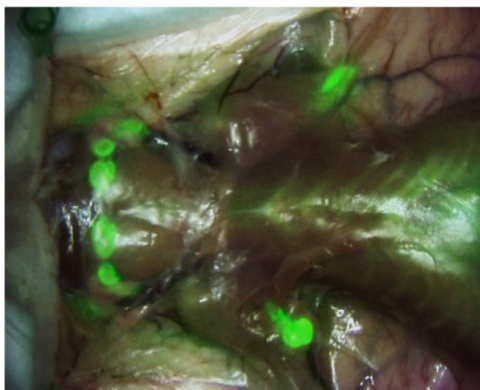
Theranostics

The Forum for Diagnostics, Imaging, and Therapy Research

ZW800-3a
(2D Chem Structure)



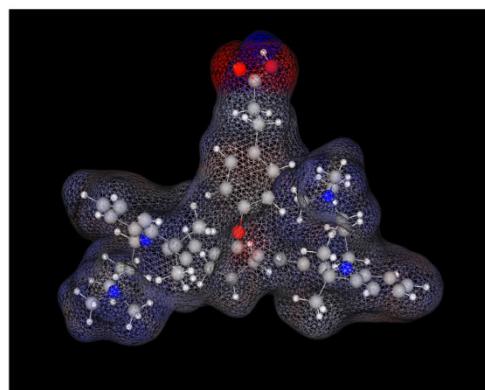
Pan Lymph Nodes
(Rat 250 g)



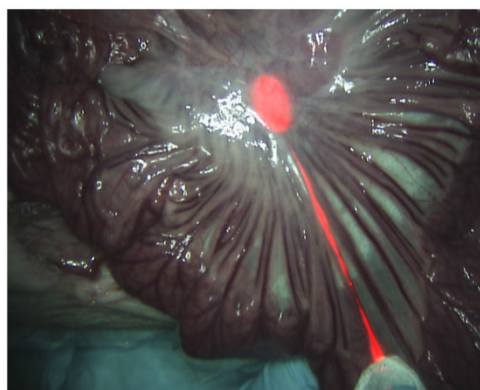
Pan Lymph Nodes
(Pig 35 kg)



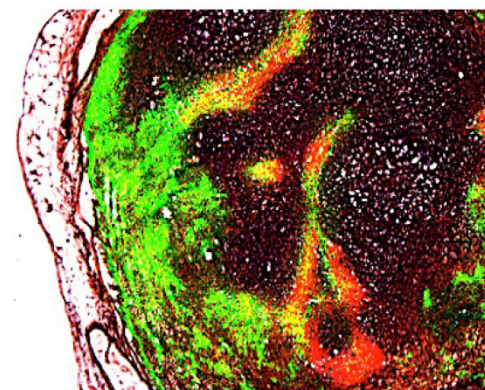
3D: ZW800-3a



Sentinel Lymph Node



SLN: H&E-NIR Merge



COVER FEATURE

Simultaneous Mapping of Pan and Sentinel Lymph Nodes for Real-Time Image-Guided Surgery
Yoshitomo Ashitate et al.



IVYSPRING
INTERNATIONAL PUBLISHER