


Supporting Material Information

Evaluation of Polymethine Dyes as Potential Probes for Near Infrared Fluorescence Imaging of Tumors: Part – 1.

Nadine S. James¹, Yihui Chen¹, Penny Joshi¹, Tymish Y. Ohulchanskyy², Manivannan Ethirajan¹, Maged Henary³, Lucjan Strekowski³ and Ravindra K Pandey¹ 

1. Department of Molecular and Cellular Biophysics and Biochemistry, Cell Stress Biology, Roswell Park Cancer Institute, Buffalo, NY 14263;
2. Institute for Lasers, Photonics and Biophotonics, University at Buffalo, NY 14260.
3. Department of Chemistry, Georgia State University, Atlanta GA 30302, USA.

 Corresponding author: Ravindra K. Pandey, Ph. D., PDT Center, Cell Stress Biology, Roswell Park Cancer Institute, Buffalo, NY 14263, Tel: 716-845-3203, Fax: 716-845-8920.

Contents:

Figure 1: *Ex vivo* fluorescence biodistribution of NIRFs **1–3** at 24h post injection.

Figure 2: *Ex vivo* fluorescence biodistribution of NIRFs **1–3** at 48h post injection.

Figure 3: *Ex vivo* fluorescence biodistribution of NIRFs **1–3** at 72h post injection.

Figure 4: *Ex vivo* fluorescence biodistribution of NIRFs **5–8** at 24h post injection.

Figure 5: *Ex vivo* fluorescence biodistribution of NIRFs **5–8** at 48h post injection.

Figure 6: *Ex vivo* fluorescence biodistribution of NIRFs **5–8** at 72h post injection.

Figure 7-11: ¹H NMR spectra of Near Infrared fluorophores (NIRFs) **5, 7-10**

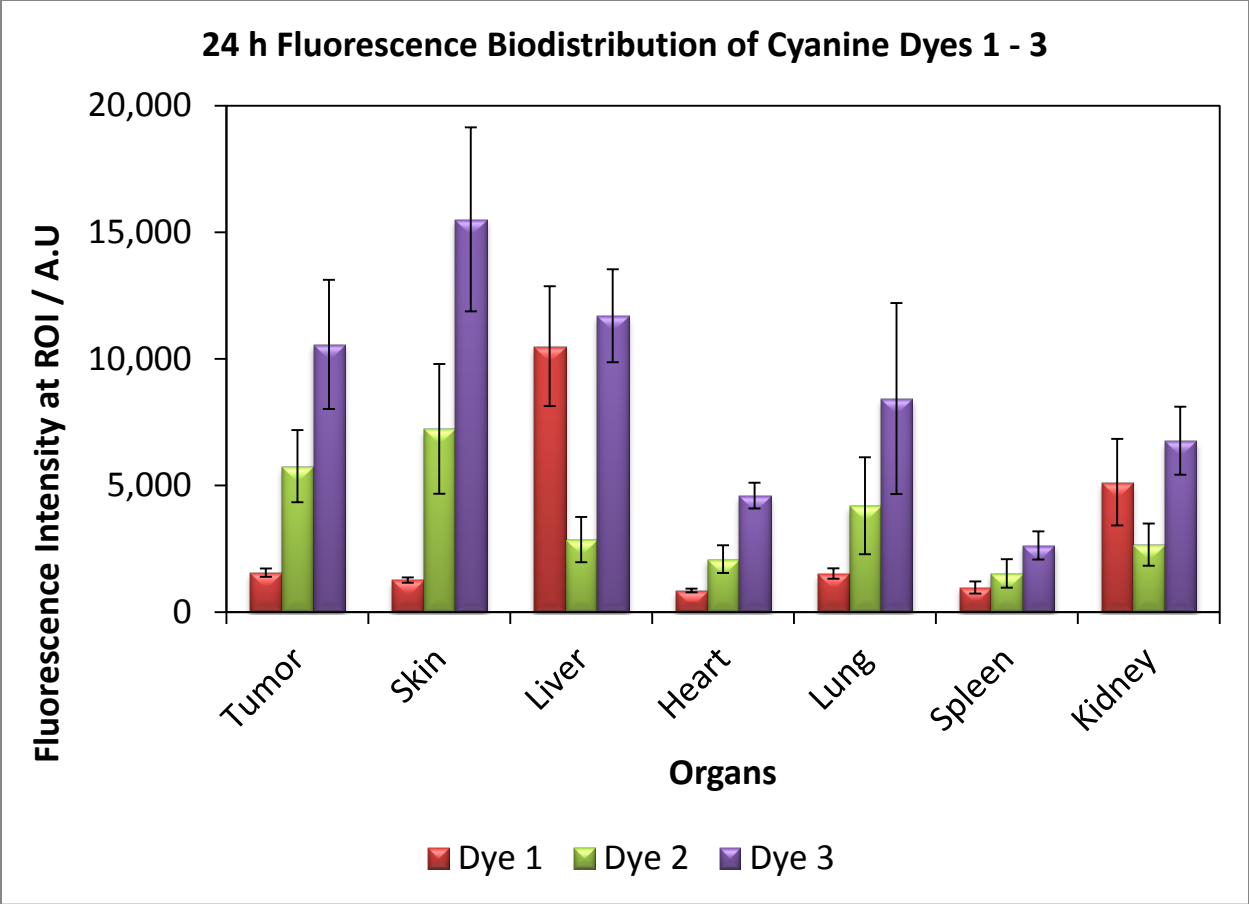


Figure 1: Ex vivo fluorescence biodistribution of NIRFs 1–3 at 24h post injection, in various tissues (tumor, skin, liver, heart, lung, spleen and kidney). Note: The biodistribution of the cyanine dye 4 is not shown due to its weak *in vivo* fluorescence.

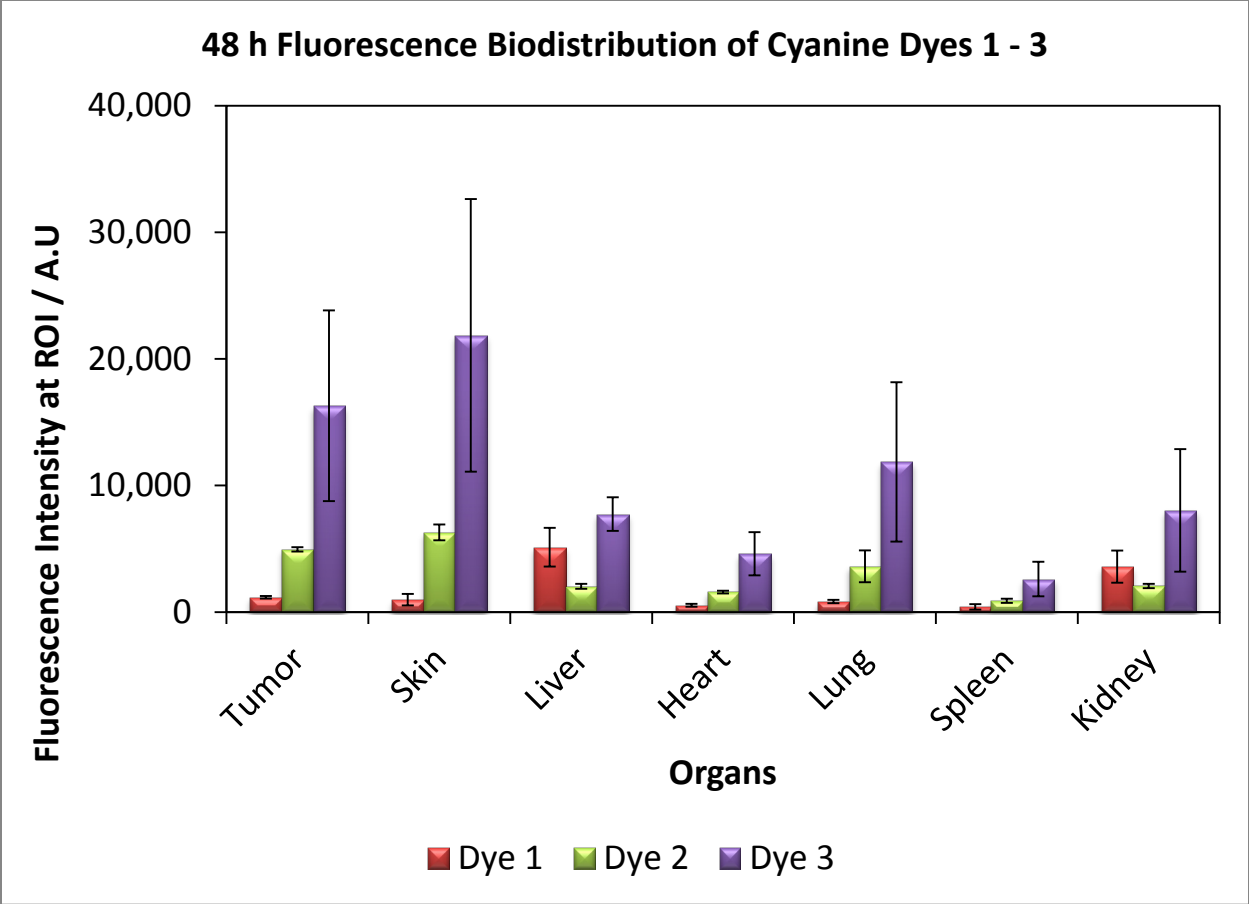


Figure 2: Ex vivo fluorescence biodistribution of NIRFs 1–3 at 48h post injection, in various tissues (tumor, skin, liver, heart, lung, spleen and kidney). Note: The biodistribution of the cyanine dye 4 is not shown due to its weak *in vivo* fluorescence.

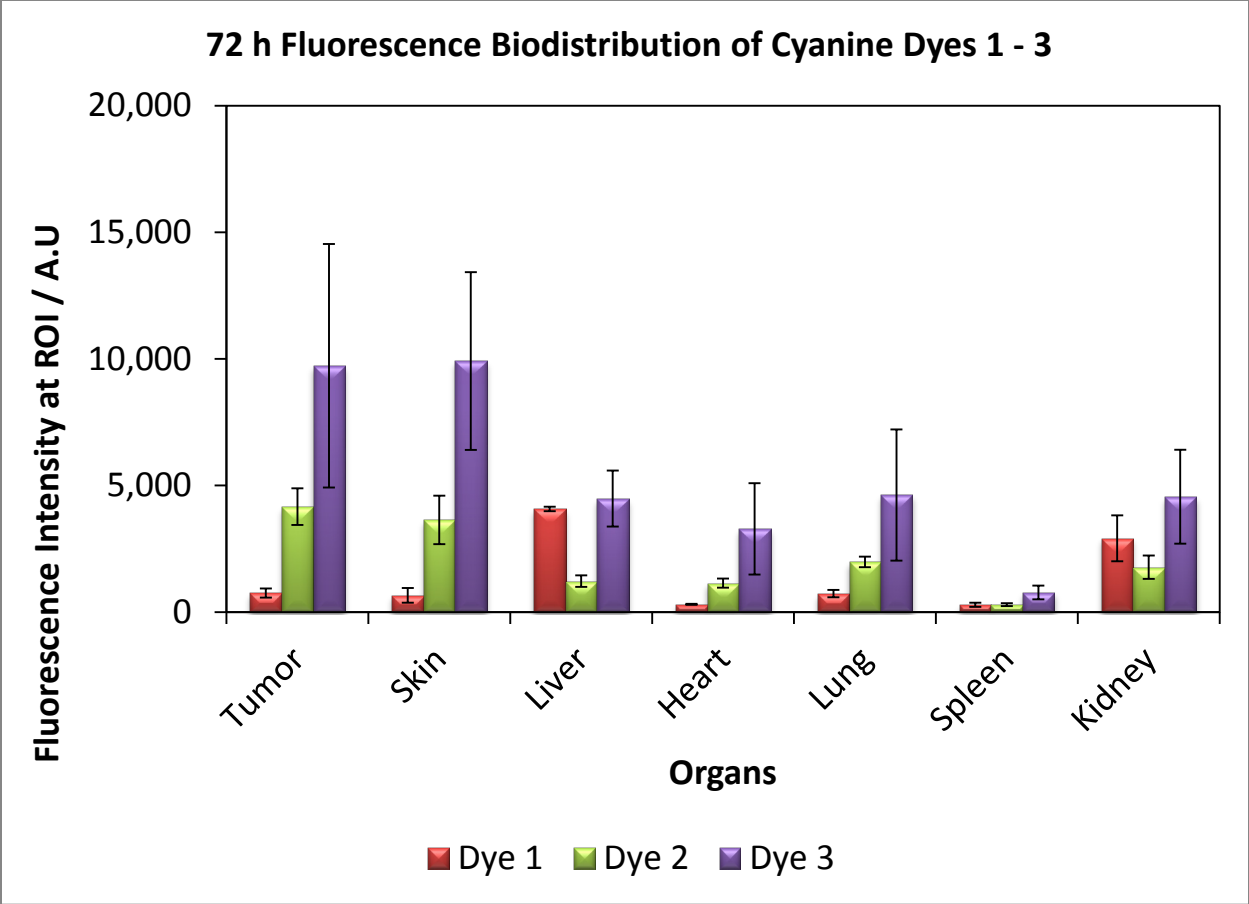


Figure 3: Ex vivo fluorescence biodistribution of NIRFs 1–3 at 72h post injection, in various tissues (tumor, skin, liver, heart, lung, spleen and kidney). Note: The biodistribution of the cyanine dye 4 is not shown due to its weak *in vivo* fluorescence.

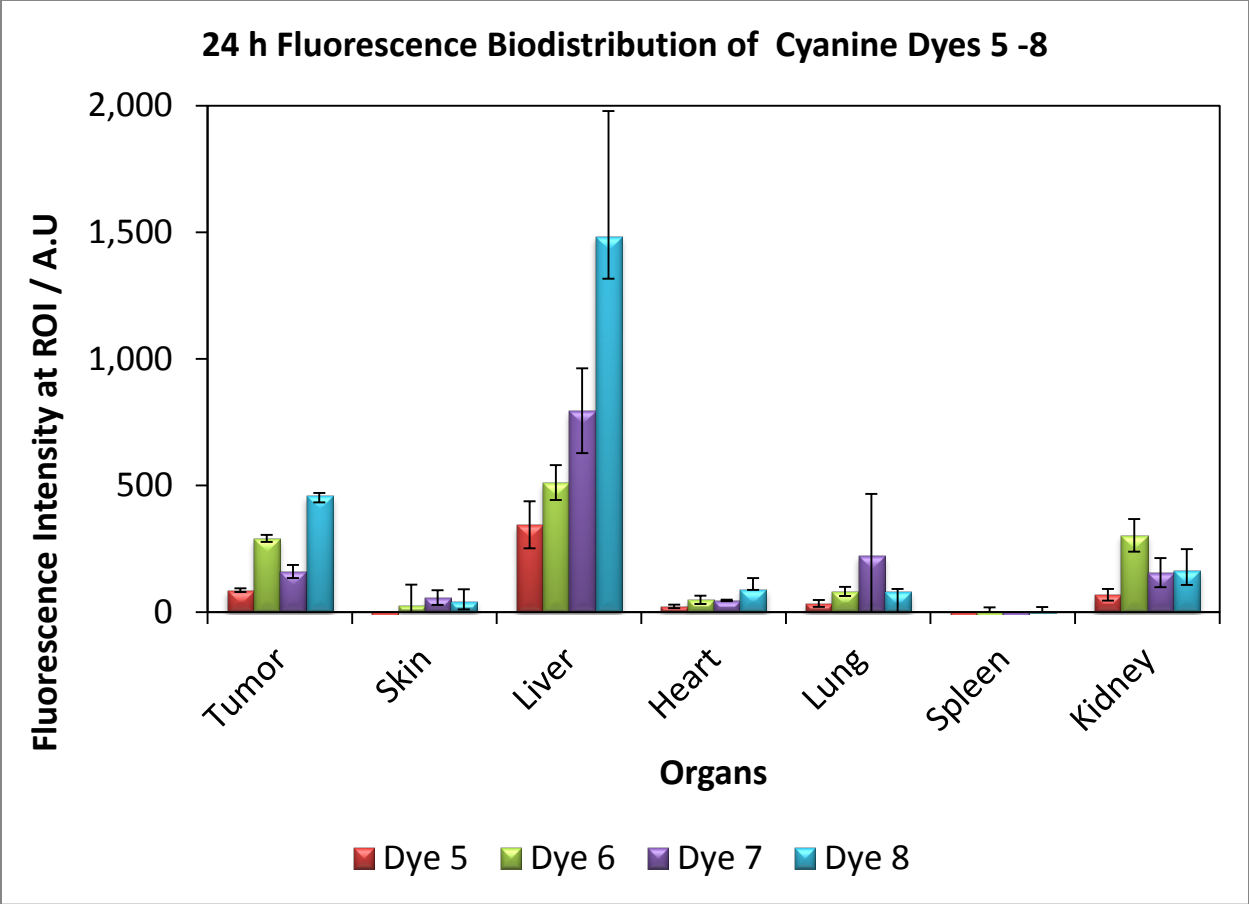


Figure 4: Ex vivo fluorescence biodistribution of NIRFs 5-8 at 24h post injection, in various tissues (tumor, skin, liver, heart, lung, spleen and kidney). Note: The biodistribution of the cyanine dyes 9 and 10 are not shown due to their weak *in vivo* fluorescence.

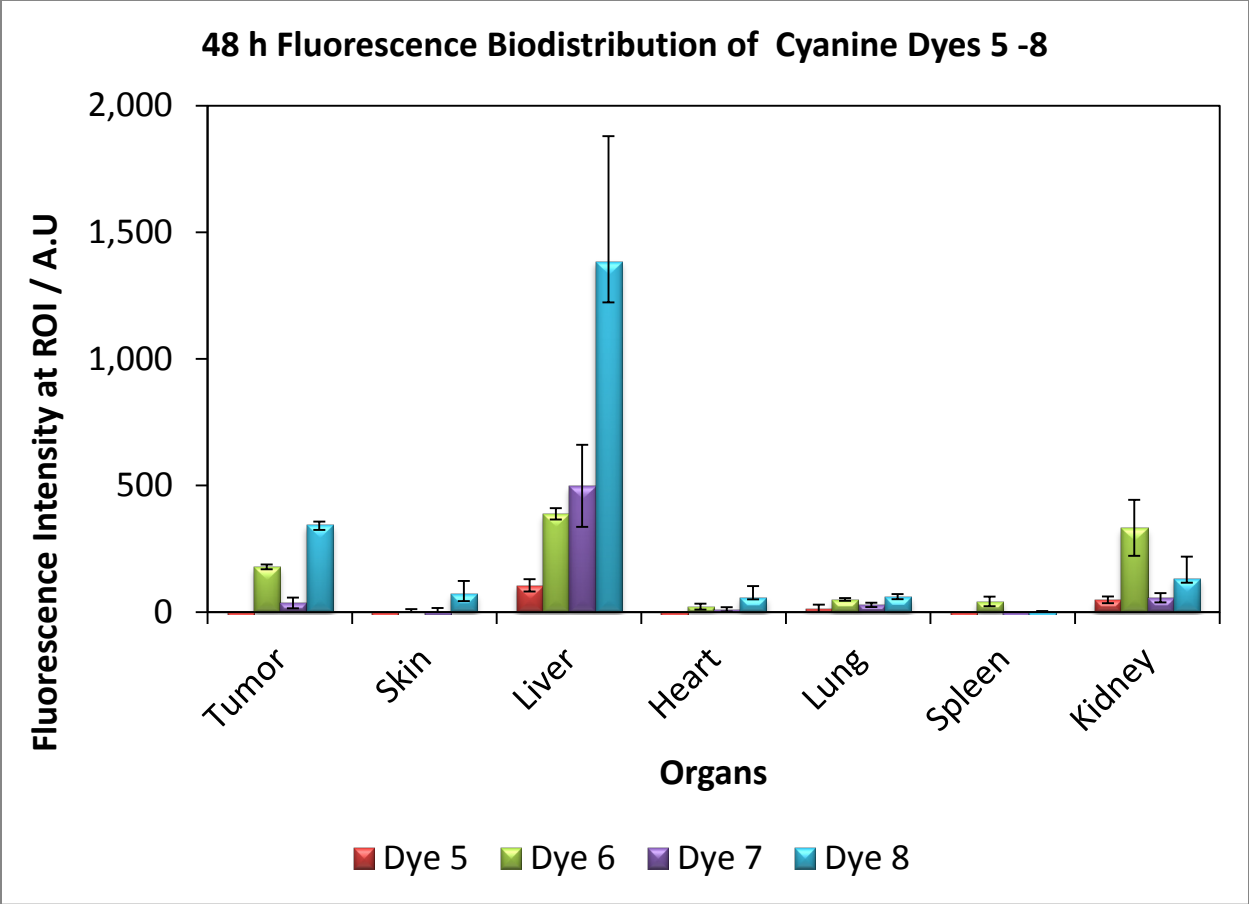


Figure 5: Ex vivo fluorescence biodistribution of NIRFs 5-8 at 48h post injection, in various tissues (tumor, skin, liver, heart, lung, spleen and kidney). Note: The biodistribution of the cyanine dye 9 and 10 are not shown due to their weak *in vivo* fluorescence.

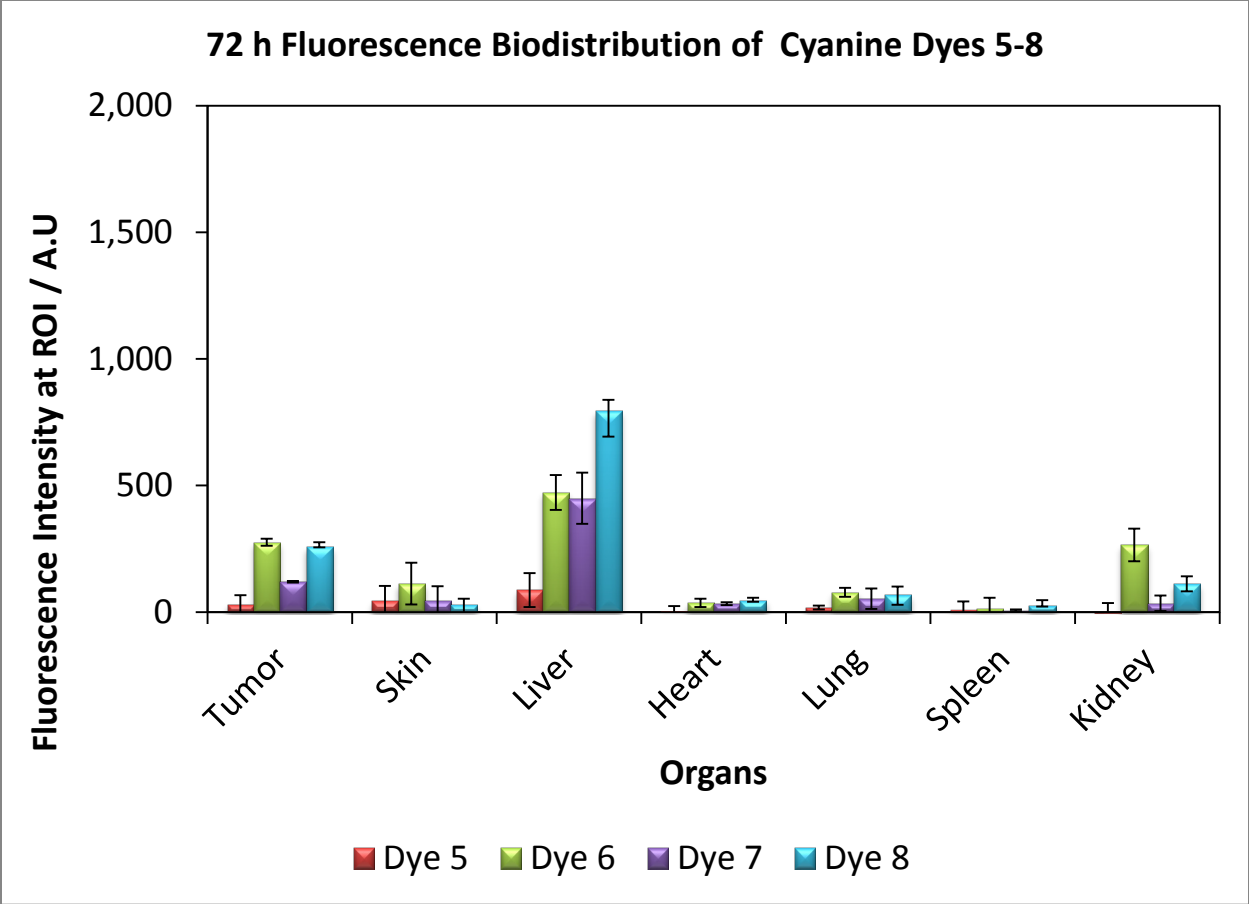


Figure 6: Ex vivo fluorescence biodistribution of NIRFs 5-8 at 72h post injection, in various tissues (tumor, skin, liver, heart, lung, spleen and kidney). Note: The biodistribution of the cyanine dyes 9 and 10 are not shown due to their weak *in vivo* fluorescence.

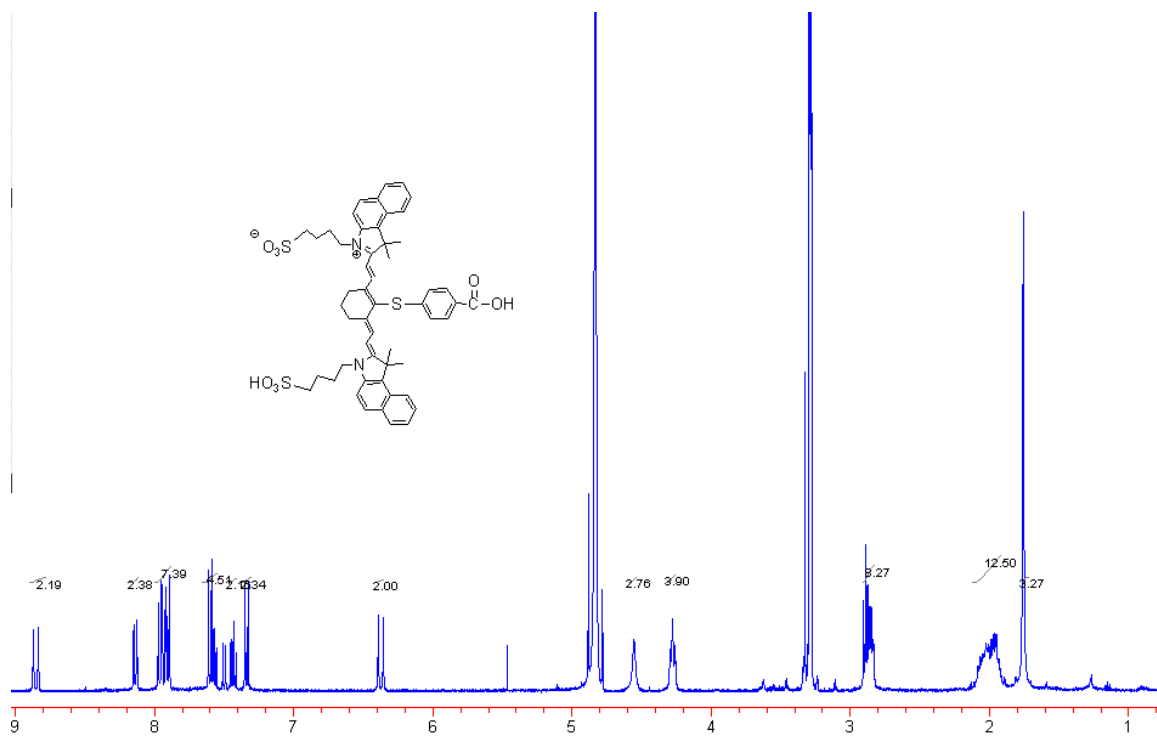


Figure 7: ¹H NMR spectrum of Near Infrared fluorophore (NIRF) 5

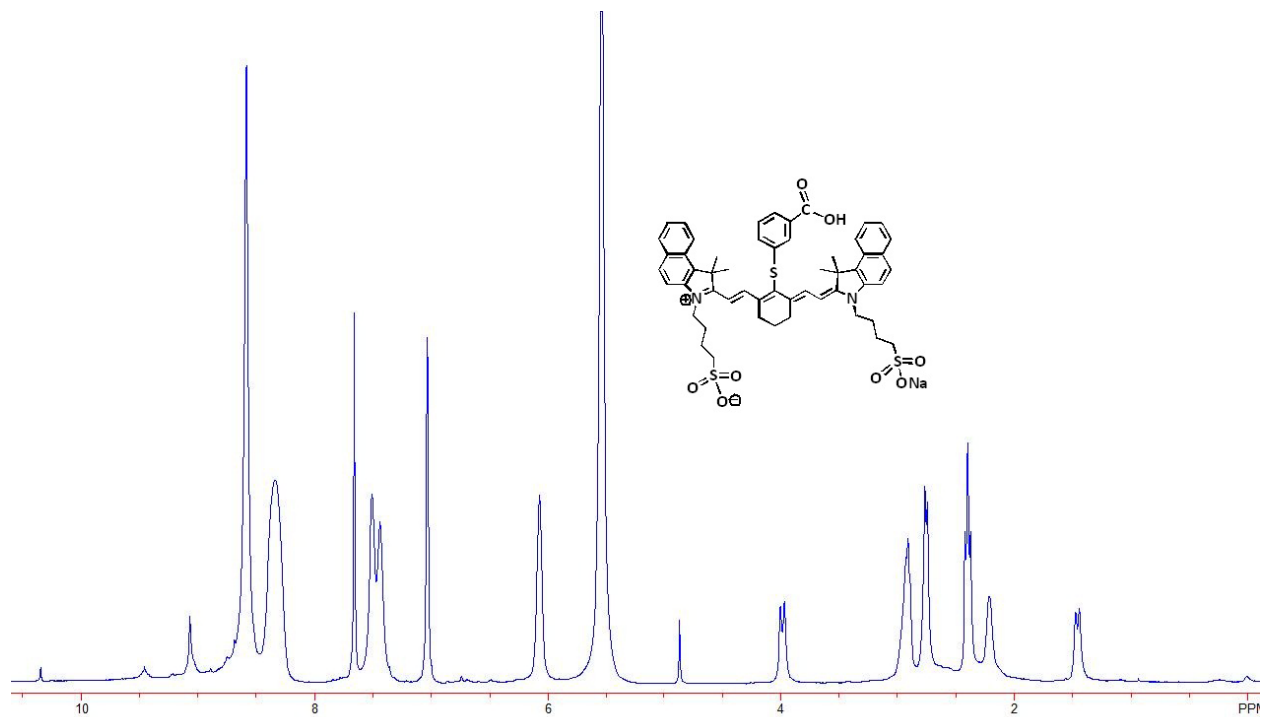


Figure 8: ¹H NMR spectrum of Near Infrared fluorophore (NIRF) 7

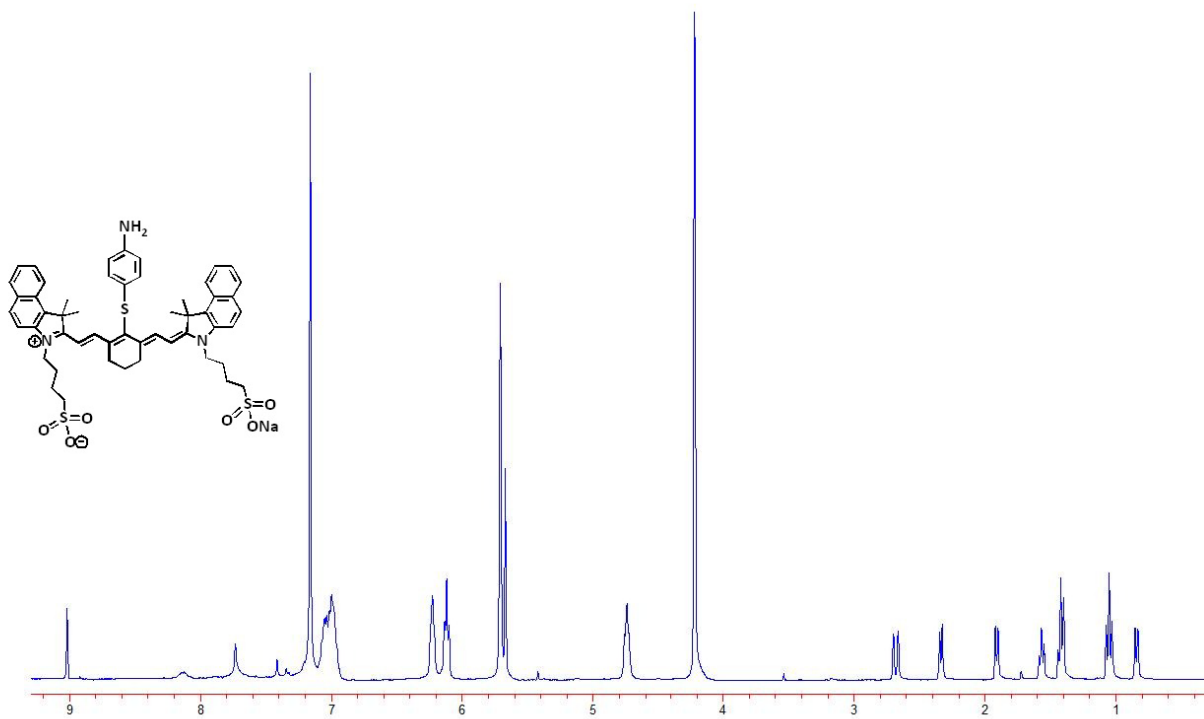


Figure 9: ¹H NMR spectrum of Near Infrared fluorophore (NIRF) 8

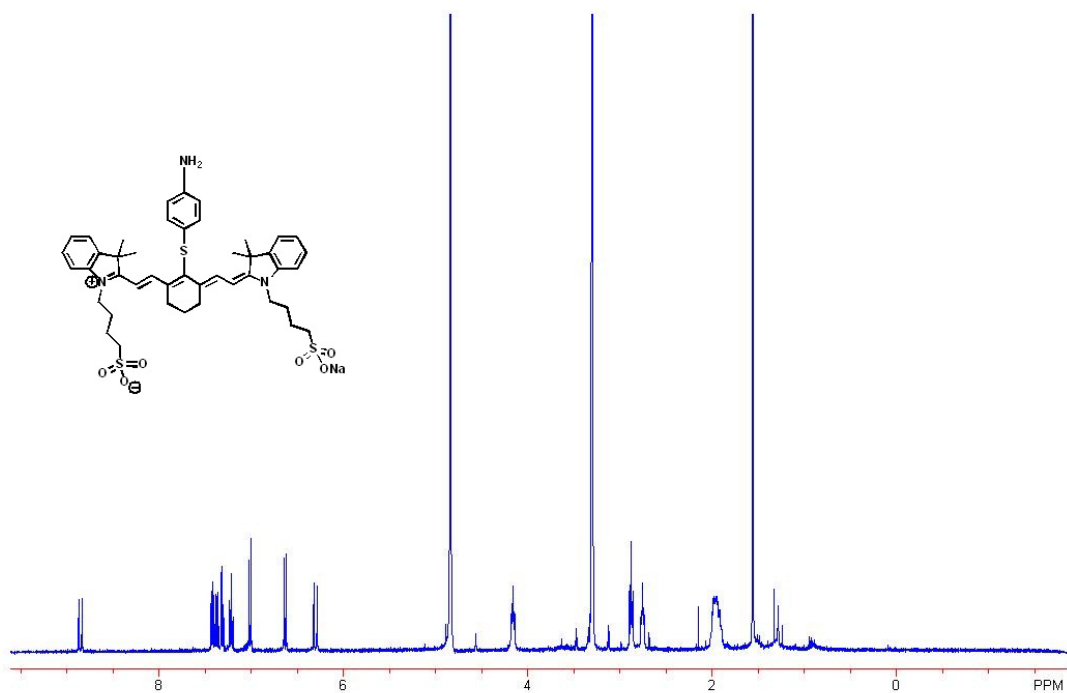


Figure 10: ¹H NMR spectrum of Near Infrared fluorophore (NIRF) **9**

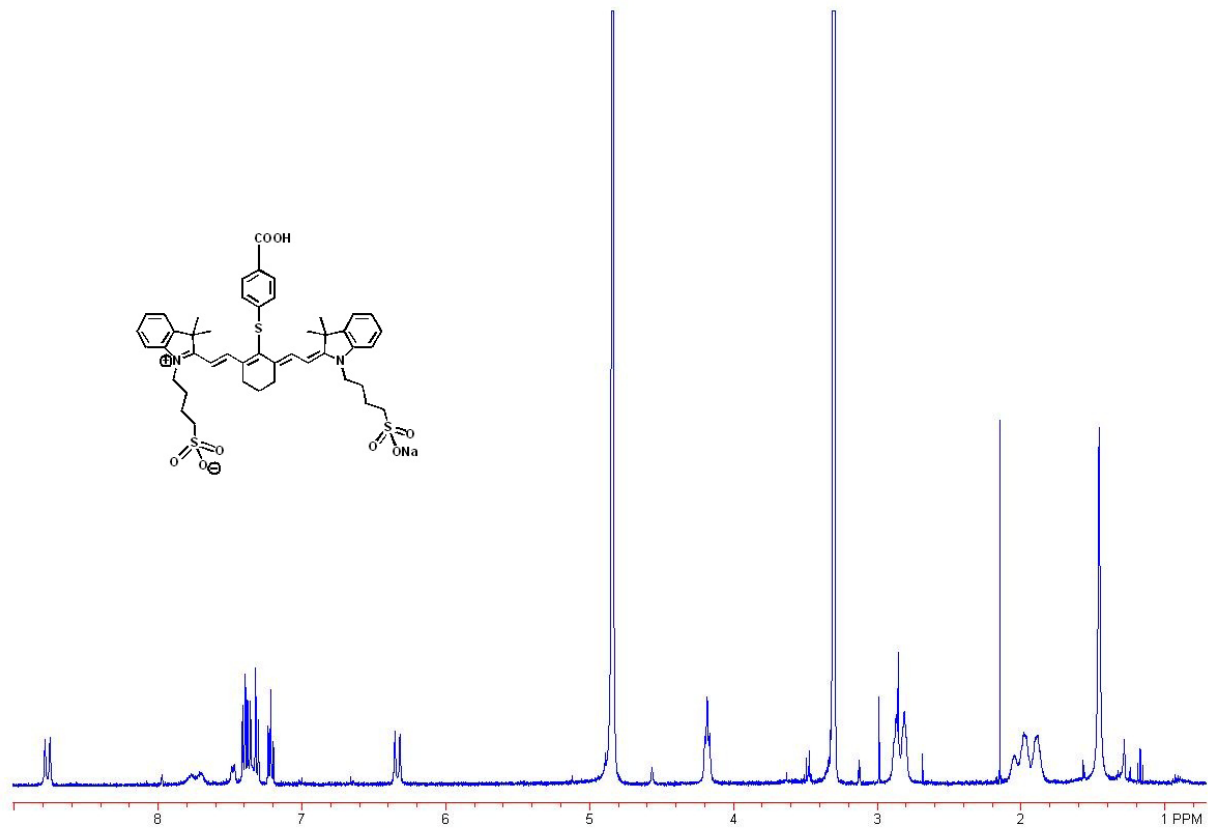


Figure 11: ¹H NMR spectrum of Near Infrared fluorophore (NIRF) 10