

Decrease in LSH and 5-hmC is associated with metastasis and genome instability

Jiantao Jia^{1,2,3,4,*}, Ying Shi^{1,3,*}, Ling Chen^{1,3}, Weiwei Lai^{1,3}, Bin Yan^{1,3}, Yiqun Jiang^{1,3},
Desheng Xiao⁵, Sichuan Xi⁶, Ya Cao^{1,3}, Shuang Liu⁴, Yan Cheng⁷, Yongguang Tao^{1,2,3,+}

- 1 Key Laboratory of Carcinogenesis and Cancer Invasion (Ministry of Education), Xiangya Hospital, Central South University, Changsha, Hunan, 410008 China
- 2 Changzhi Medical College, Changzhi, Shanxi, 046000 China
- 3 Cancer Research Institute, Central South University, Changsha, Hunan, 410078 China
- 4 Institute of Medical Sciences, Xiangya Hospital, Central South University, Changsha, Hunan, 410008 China
- 5 Department of Pathology, Xiangya Hospital, Central South University, Changsha, Hunan 410078 China
- 6 Thoracic Surgery Section, Thoracic and GI Oncology Branch, Center for Cancer Research, National Cancer Institute, Bethesda, MD 20892, USA
- 7 Department of Pharmacology, School of Pharmaceutical Sciences, Central South University, Changsha, Hunan 410078 China

* equal contribution; + Corresponding author. Email: taoyong@csu.edu.cn ; Tel. +(86) 731-84805448; Fax. +(86) 731-84470589.

Supplementary Figures and Figure legends

Figure S1

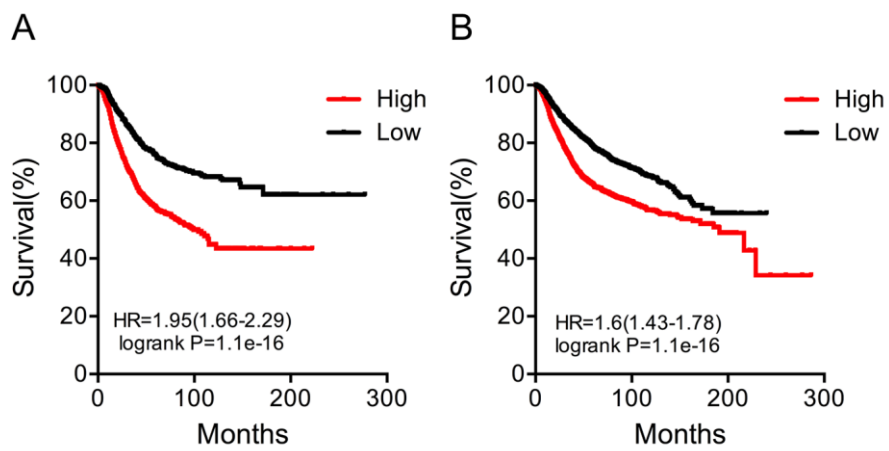


Figure S1. The Kaplan-Meier curves. The Kaplan-Meier curves of TET2 (A) and LSH (B) for the overall survival rates that are associated with samples were plotted here for breast cancer.

Figure S2

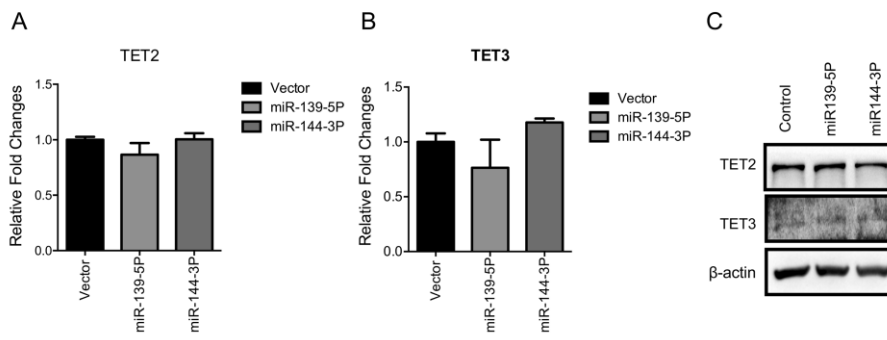


Figure S2. Both miR-139-5p and miR-144-3p did not affect the mRNA levels of TET2 (A) and TET3 (B) expression and protein level (C).

Figure S3

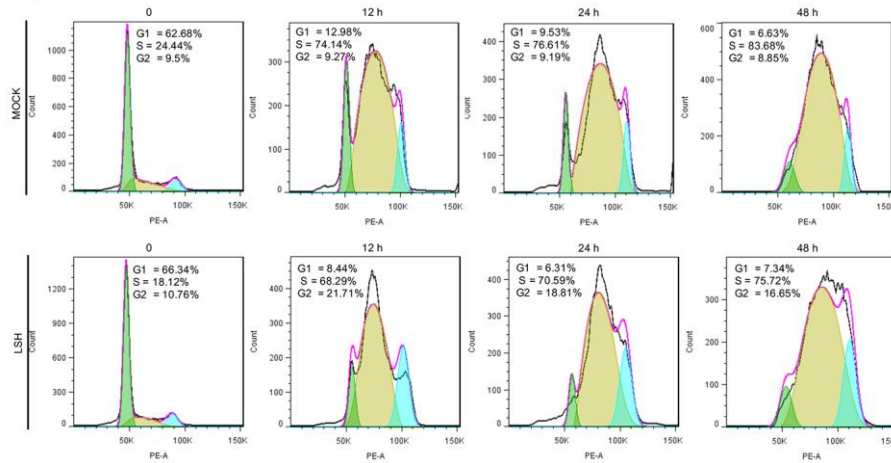


Figure S3. FACS analysis was used to detect cell cycle progression in HNE3-LSH and HNE3 cells after the treatment of cisplatin.

Figure S4

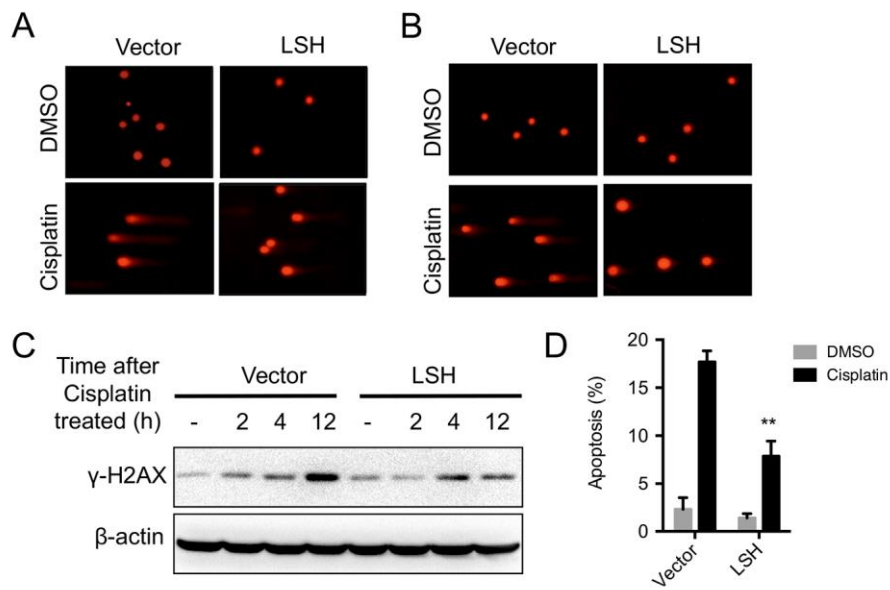


Figure S4. LSH is resistant to DNA damage and apoptosis. (A, B) The comet assay showed that LSH was resistant to DNA damage to cisplatin in HNE3 cells (A) and HK1 cells (B). (C) Western blot assay was conducted to detect γ -H2Ax using total protein derived from HNE3 cells and matching LSH overexpressed cell lines after the treatment of cisplatin at the indicated time. The level of gene expression was normalized against the housekeeping gene β -actin. (D) FACS assay was performed to assess apoptosis in HNE3 cells and matching LSH overexpressed cell lines after the treatment of cisplatin for 72 hrs.