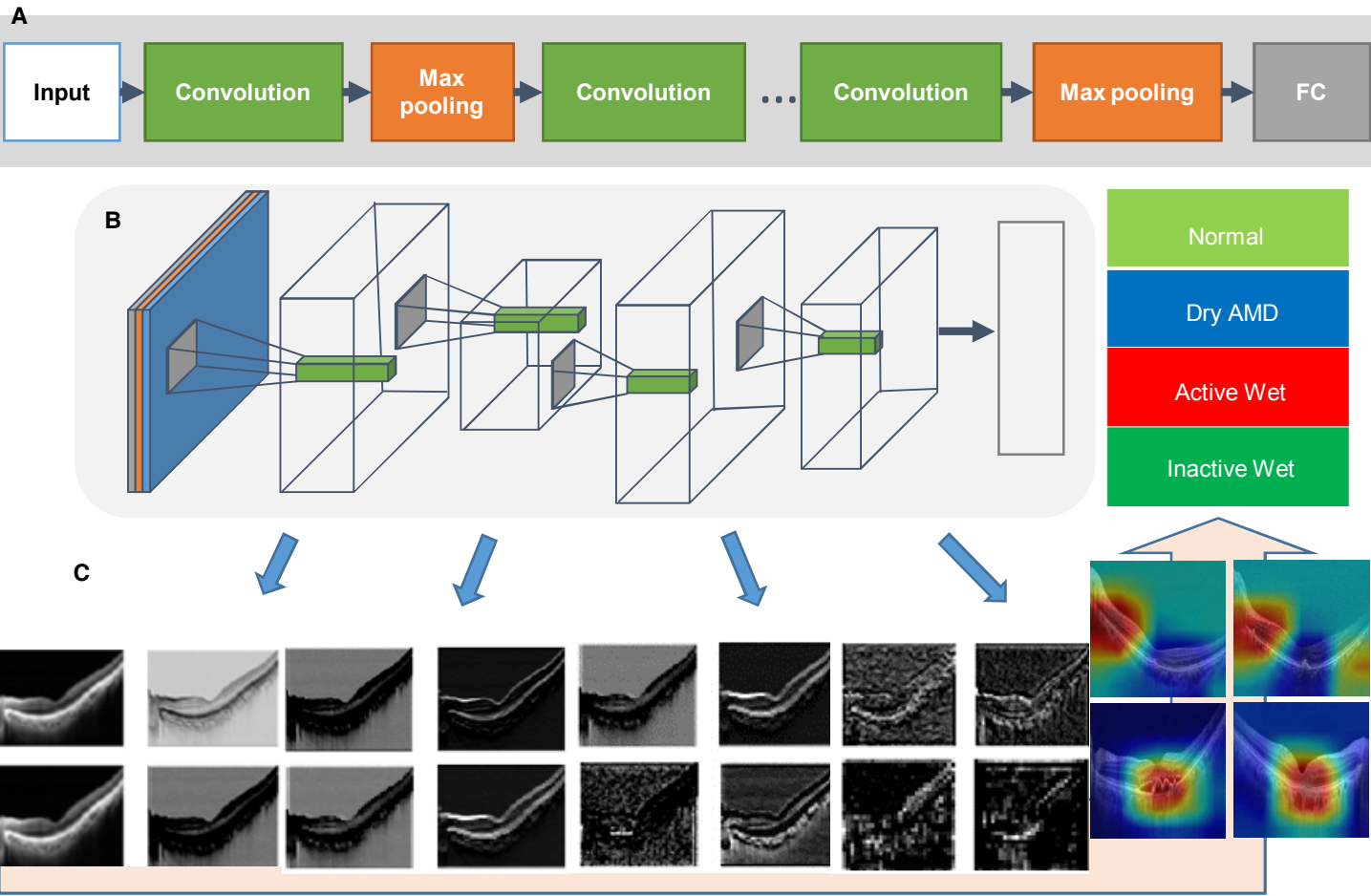
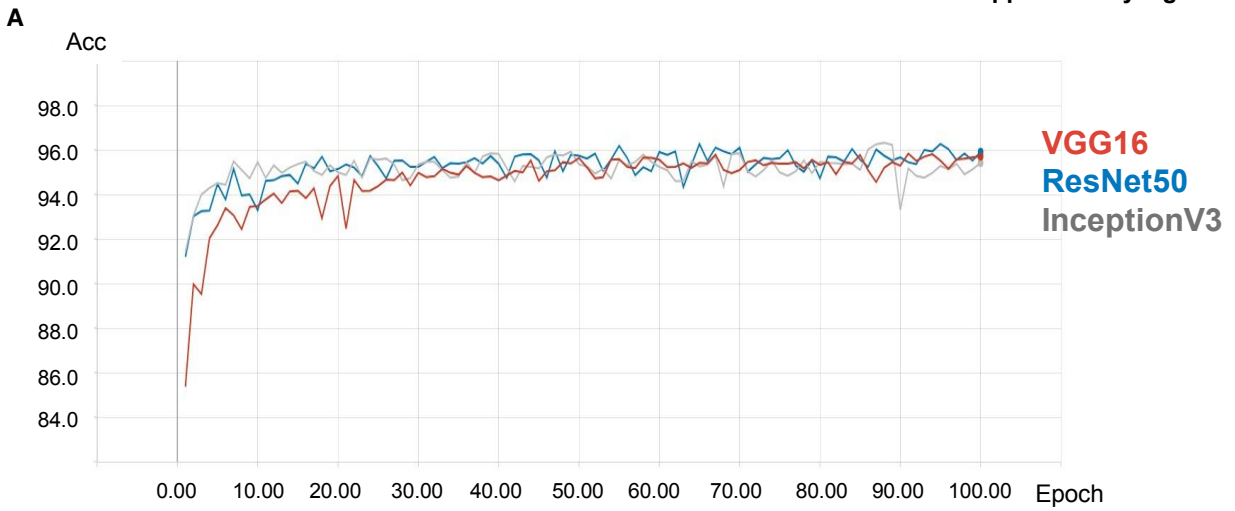


Supplementary Figure 1



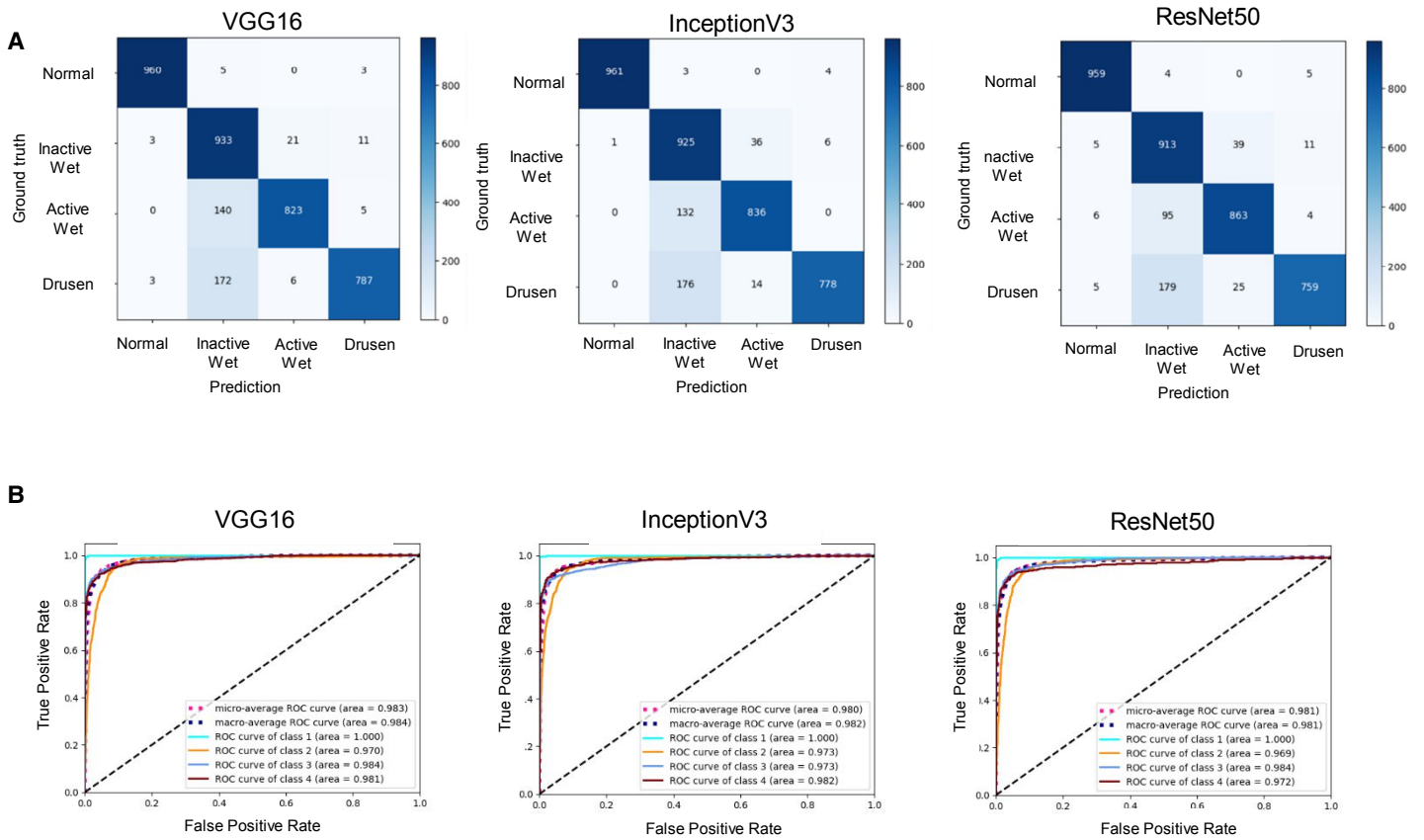
Supplementary Figure 2



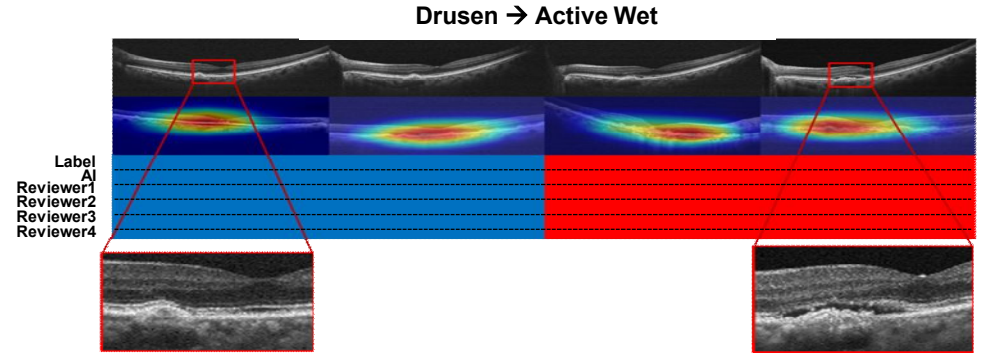
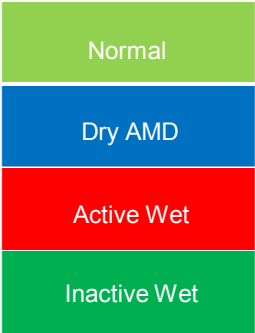
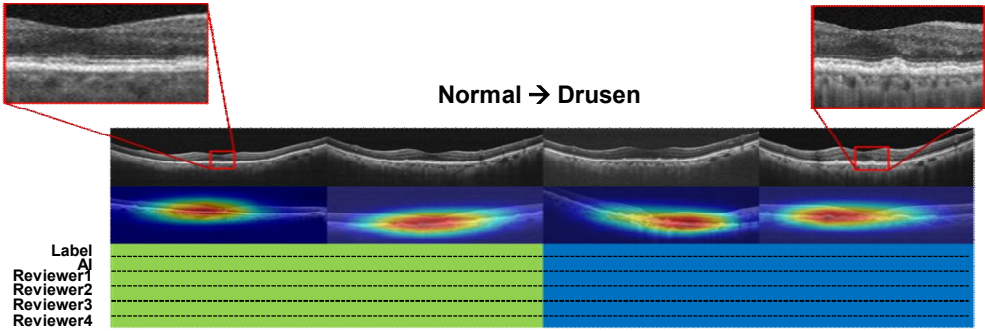
**B**

Enroll Type	All 4 types
Architecture	VGG16/InceptionV3/ResNet50
Optimizer	Adam
Learning Rate	1e-4
Batch size	128
Total number of epochs run during training	100
Epochs with the minimal value of loss (best model)	91/88/65
Accuracy of validation of the best model	99.98%/100%/99.74%
Accuracy of verification with independent dataset	91.4%/92.67%/90.73%

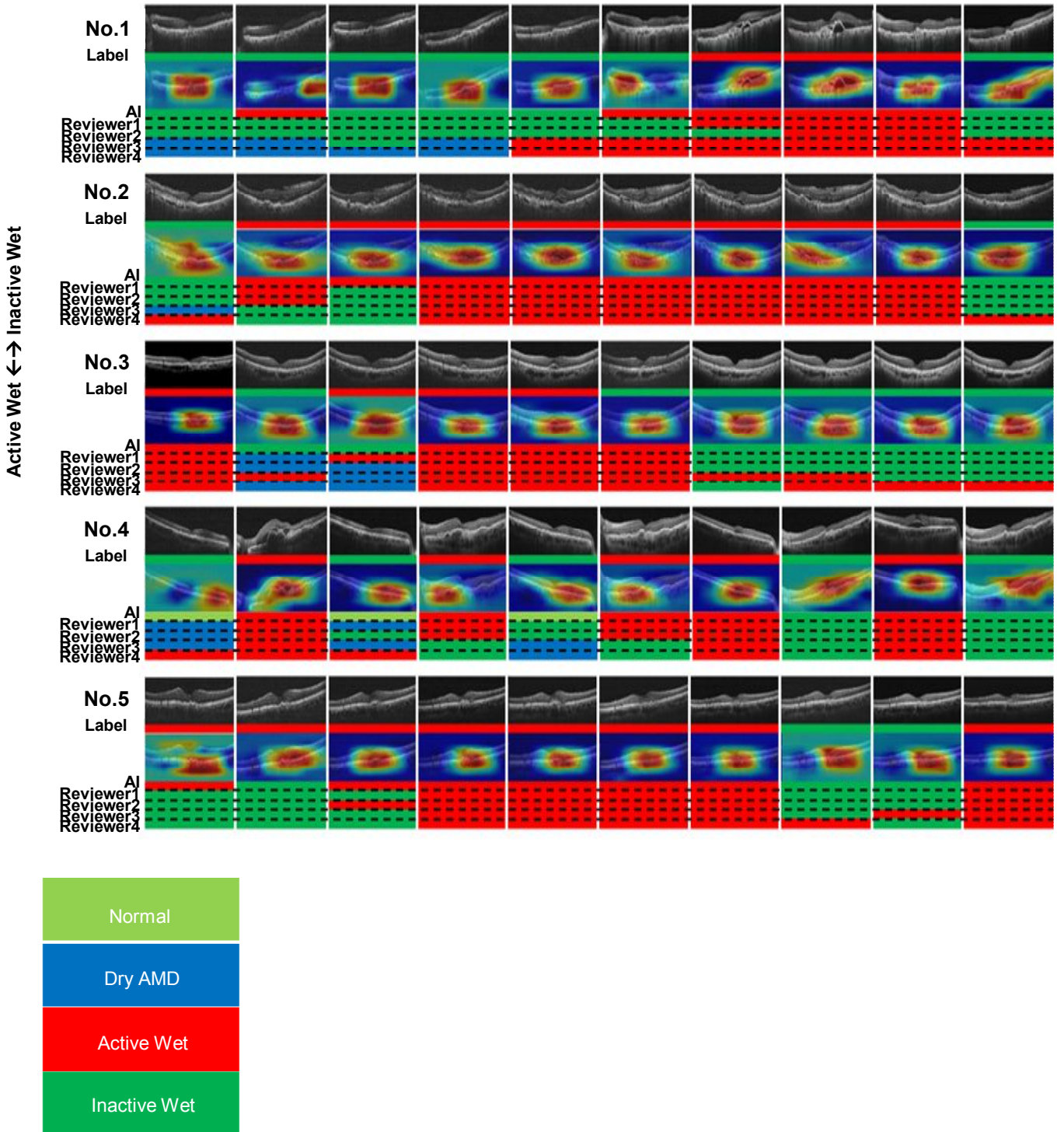
Supplementary Figure 3



Supplementary Figure 4

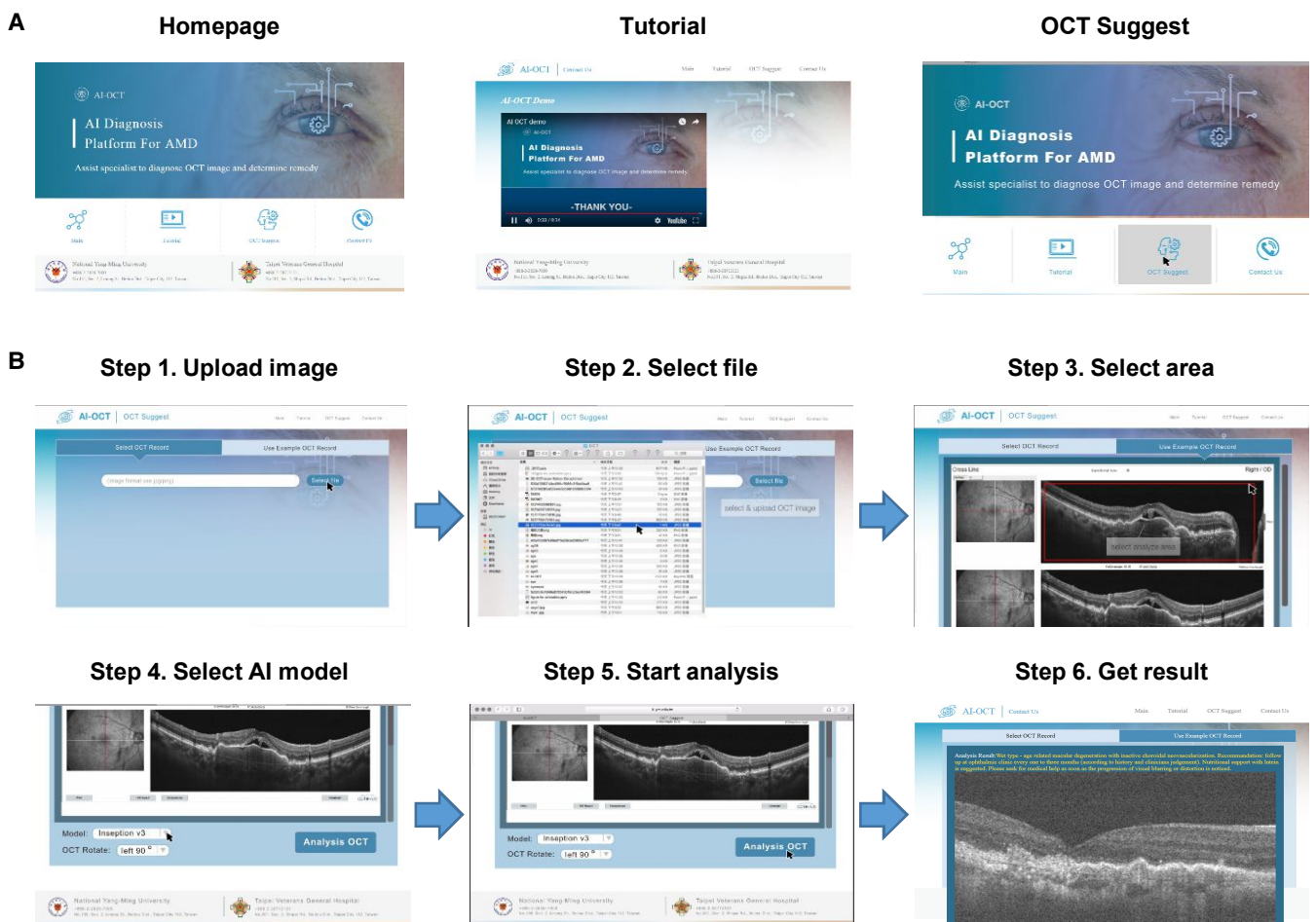


Supplementary Figure 5

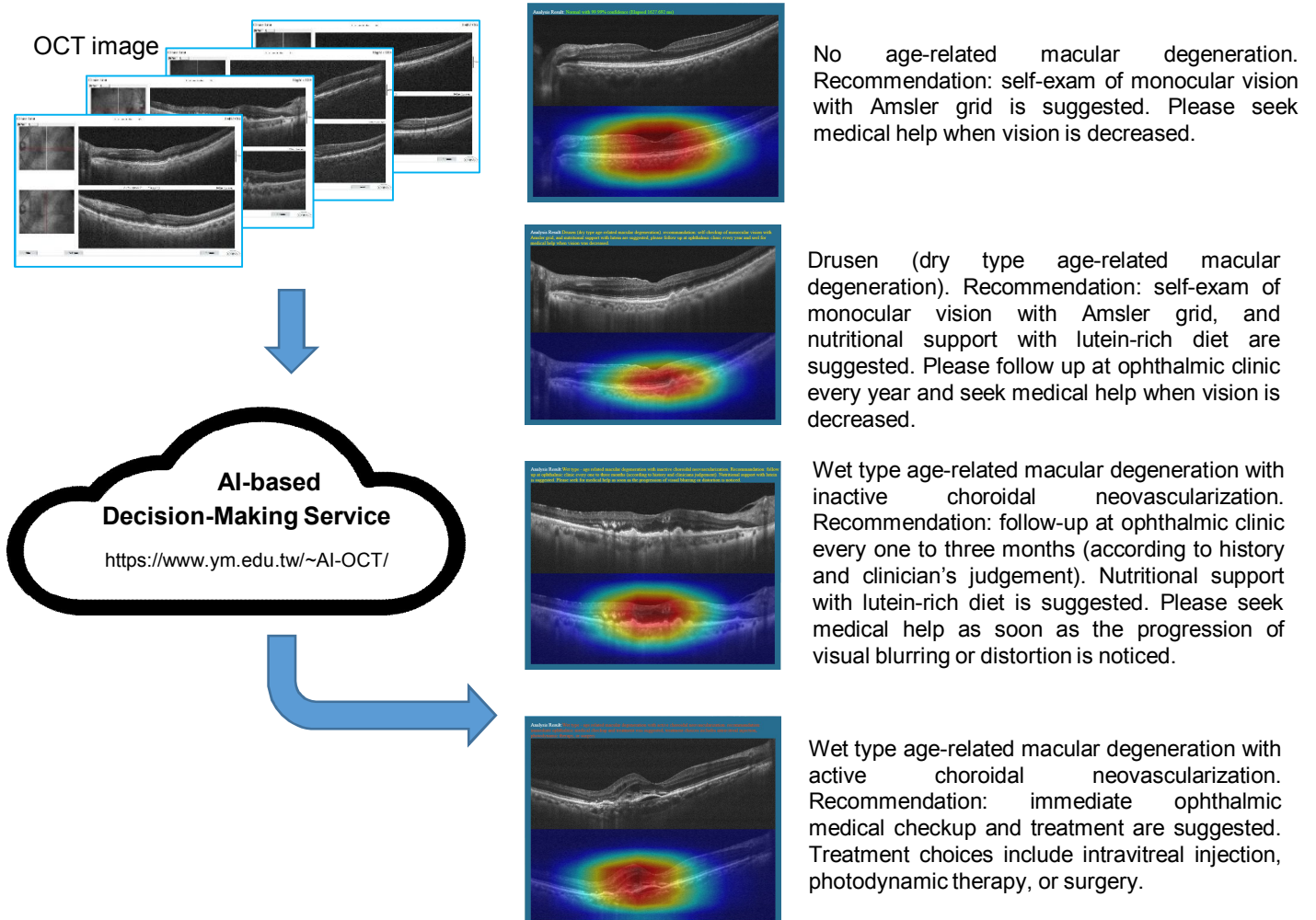


Website: <https://www.ym.edu.tw/~AI-OCT/>

Supplementary Figure 6



## Supplementary Figure 7



**Supplementary Table 1**

	VGG16	InceptionV3	ResNet50
<b>Accuracy</b>	90.47%	90.39%	90.24%
<b>Sensitivity (normal)</b>	99.17%	99.28%	99.07%
<b>Sensitivity (dry AMD)</b>	81.30%	80.37%	78.41%
<b>Sensitivity (inactive wet AMD)</b>	96.38%	95.56%	94.32%
<b>Sensitivity (active wet AMD)</b>	85.02%	86.36%	89.15%
<b>Specificity (normal)</b>	99.79%	99.97%	99.45%
<b>Specificity (dry AMD)</b>	99.35%	99.66%	99.31%
<b>Specificity (inactive wet AMD)</b>	89.08%	89.08%	90.43%
<b>Specificity (active wet AMD)</b>	99.07%	98.28%	97.80%