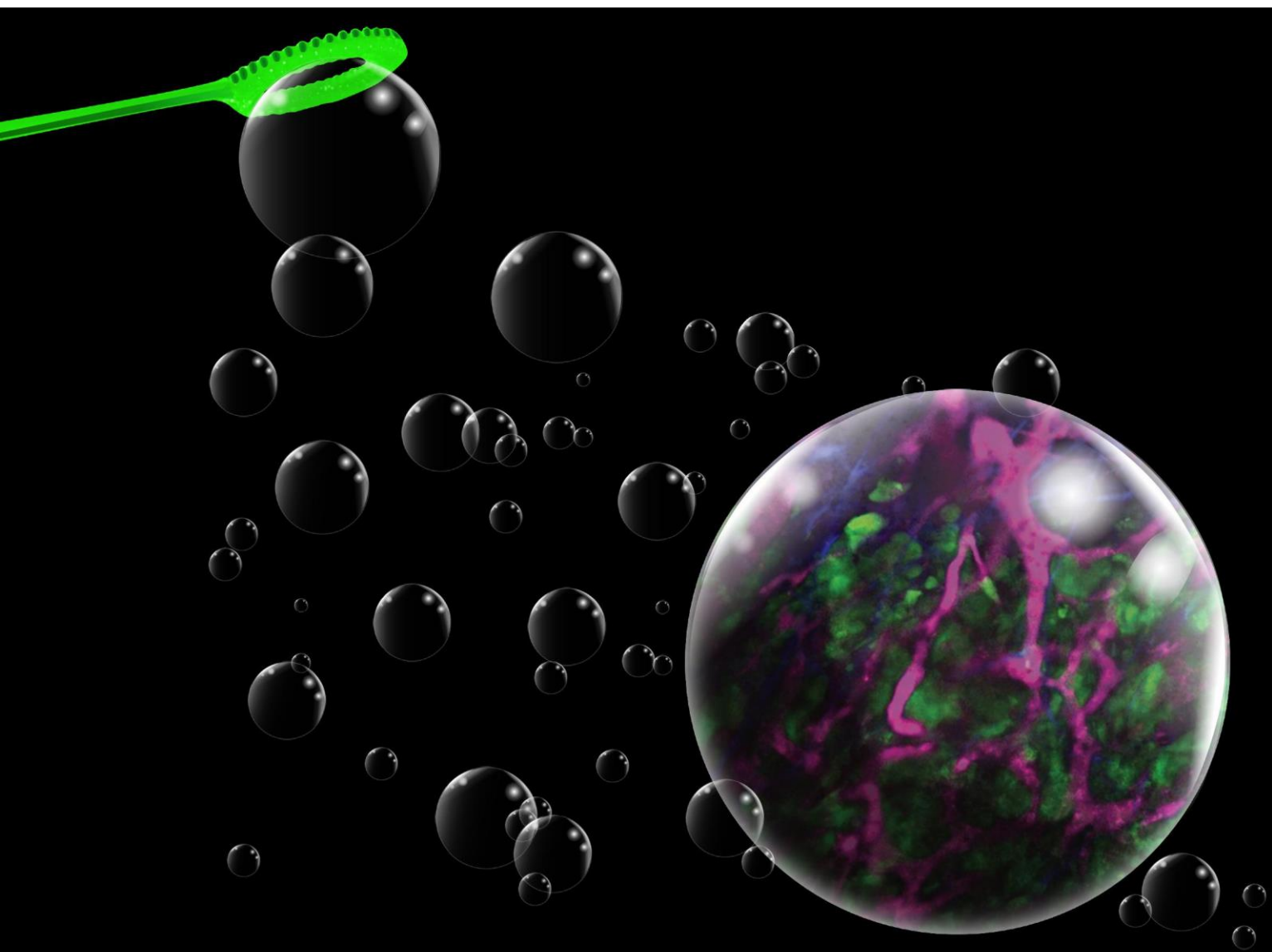


# Theranostics

The Forum for Diagnostics, Imaging, and Therapy Research



## Front Cover:

**Concurrent visual and acoustic tracking of passive and active delivery of nanobubbles to tumors**

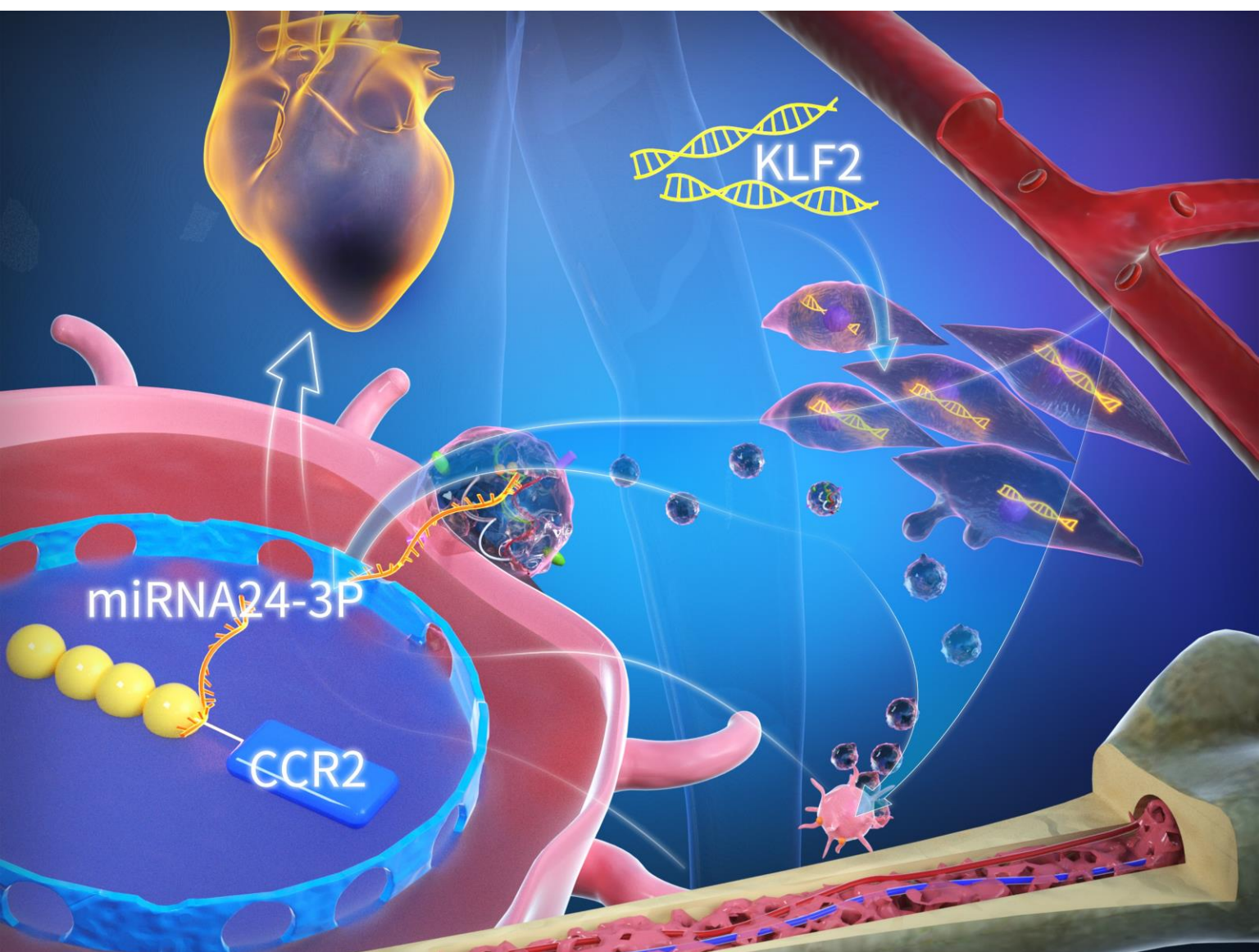
*C. Pellow et al. pp.11690*



IVYSPRING  
INTERNATIONAL PUBLISHER

# Theranostics

The Forum for Diagnostics, Imaging, and Therapy Research



## Inside Front Cover:

**Extracellular vesicles derived from Krüppel-Like Factor 2-overexpressing endothelial cells attenuate myocardial ischemia-reperfusion injury by preventing Ly6C<sup>high</sup> monocyte recruitment**

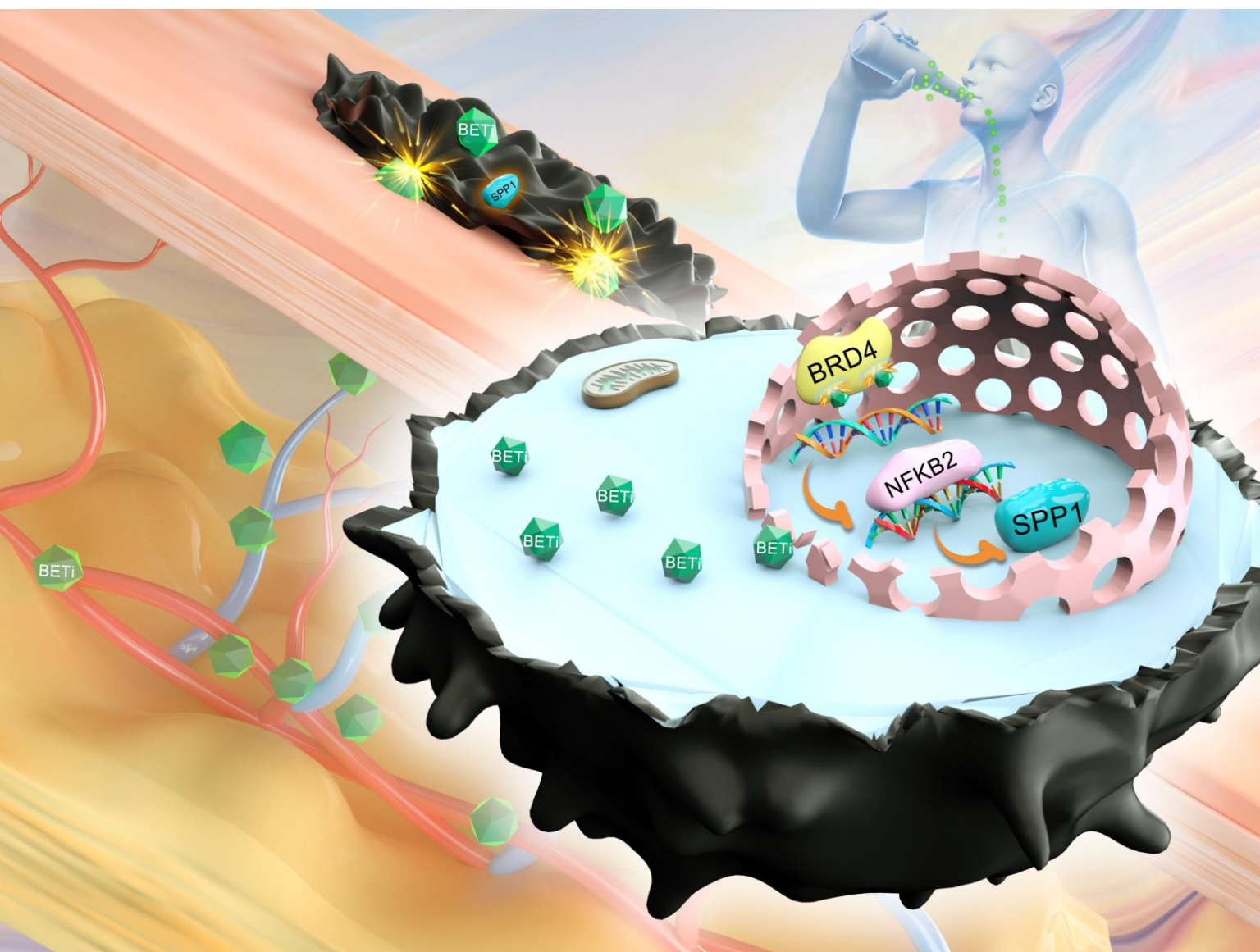
*S. Qiao et al. pp.11562*



IVYSPRING  
INTERNATIONAL PUBLISHER

# Theranostics

The Forum for Diagnostics, Imaging, and Therapy Research



## Inside Back Cover:

**BET inhibitor suppresses melanoma progression *via* the noncanonical NF- $\kappa$ B/SPP1 pathway**

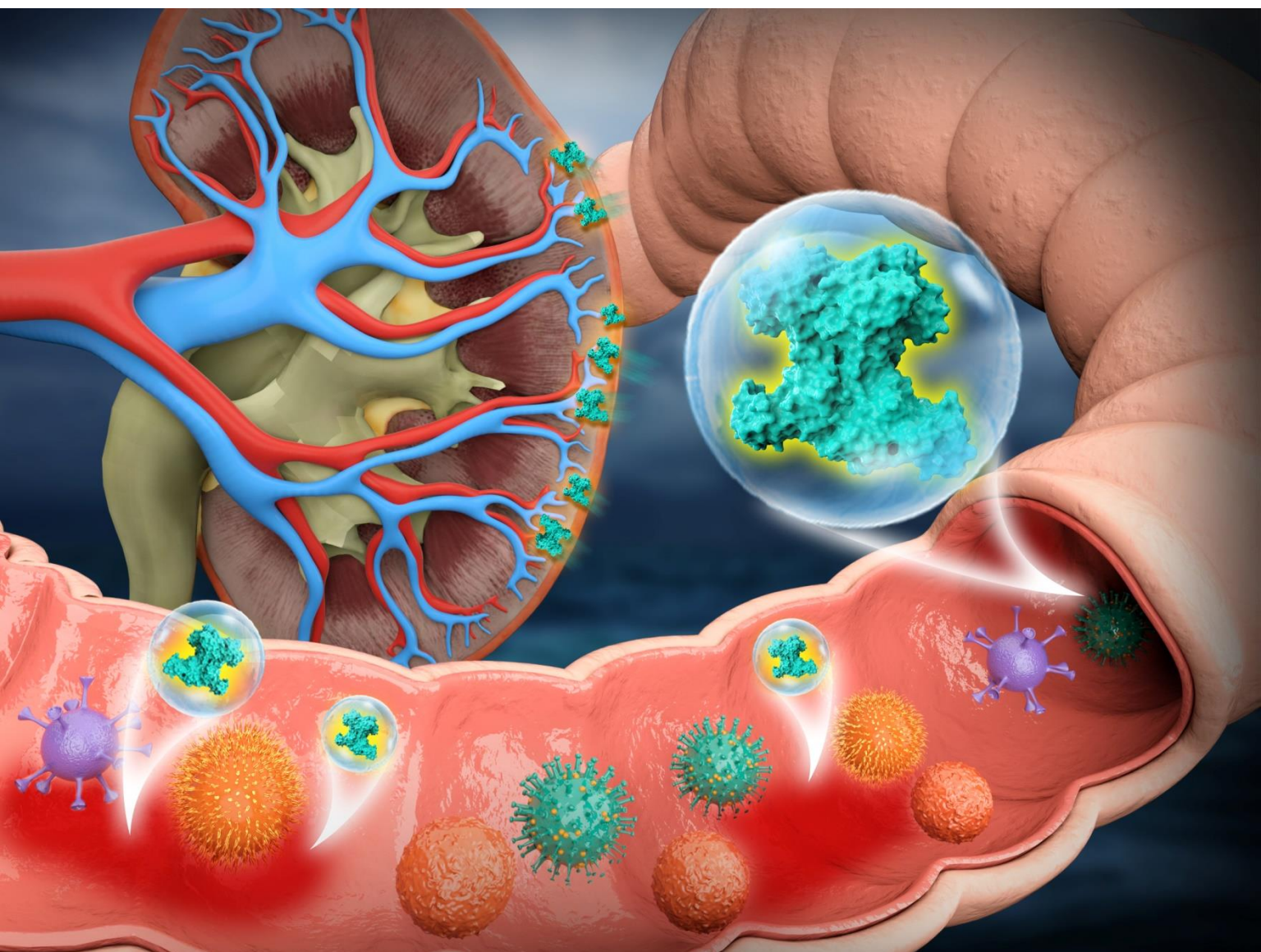
*G. Deng et al. pp.11428*



IVYSPRING  
INTERNATIONAL PUBLISHER

# Theranostics

The Forum for Diagnostics, Imaging, and Therapy Research



## Back Cover:

**Perspectives on how mucosal immune responses, infections and gut microbiome shape IgA nephropathy and future therapies**

*J.W. He et al. pp.11462*



IVYSPRING  
INTERNATIONAL PUBLISHER