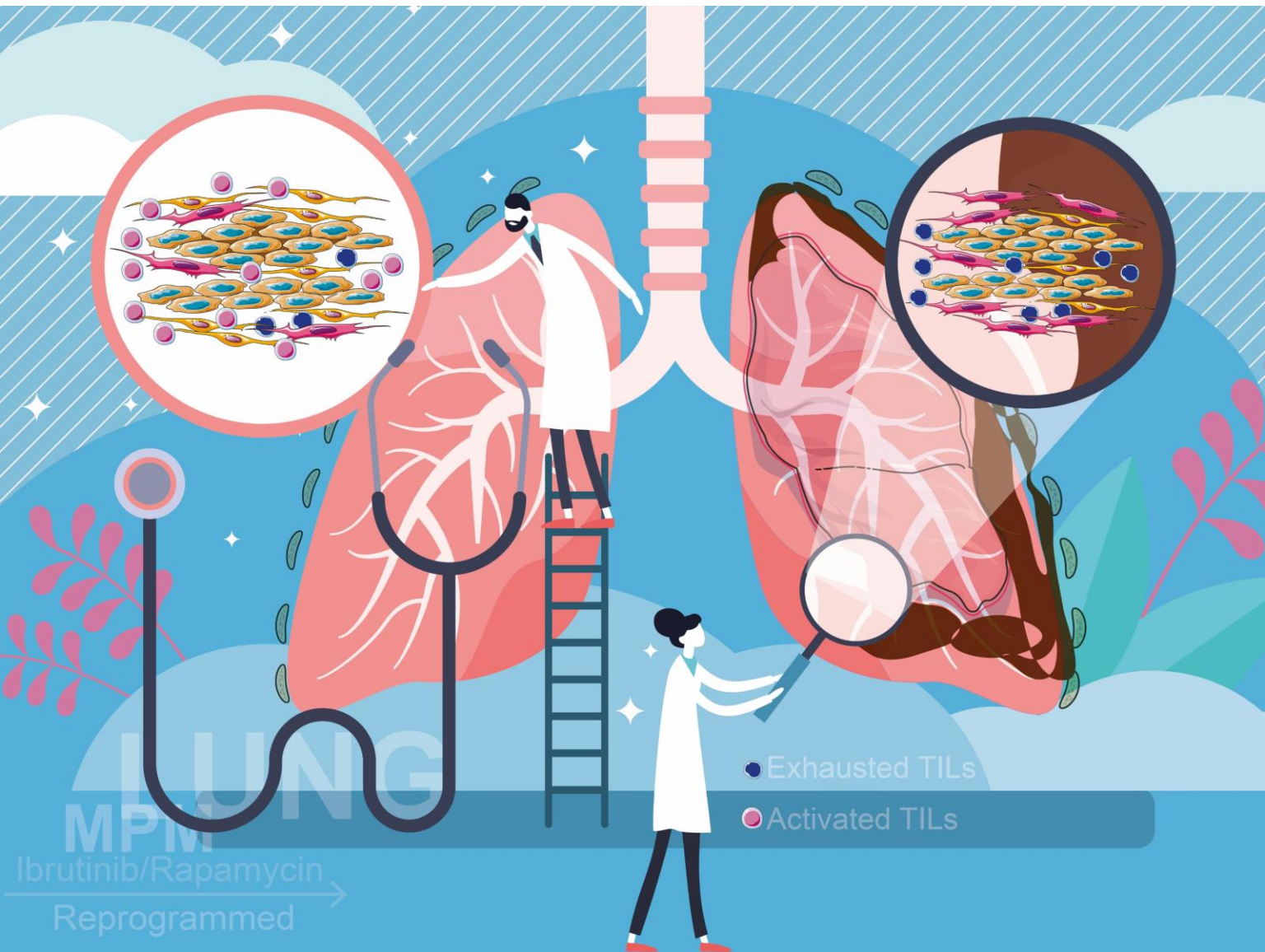


Theranostics

The Forum for Diagnostics, Imaging, and Therapy Research



Front Cover:

Tumor-infiltrating lymphocytes are functionally inactivated by CD90+ stromal cells and reactivated by combined Ibrutinib and Rapamycin in human pleural mesothelioma

H. Yang et al. pp.167



IVYSPRING
INTERNATIONAL PUBLISHER

Theranostics

The Forum for Diagnostics, Imaging, and Therapy Research

Inside Front Cover:

Hypoxia-primed monocytes/macrophages enhance postinfarction myocardial repair

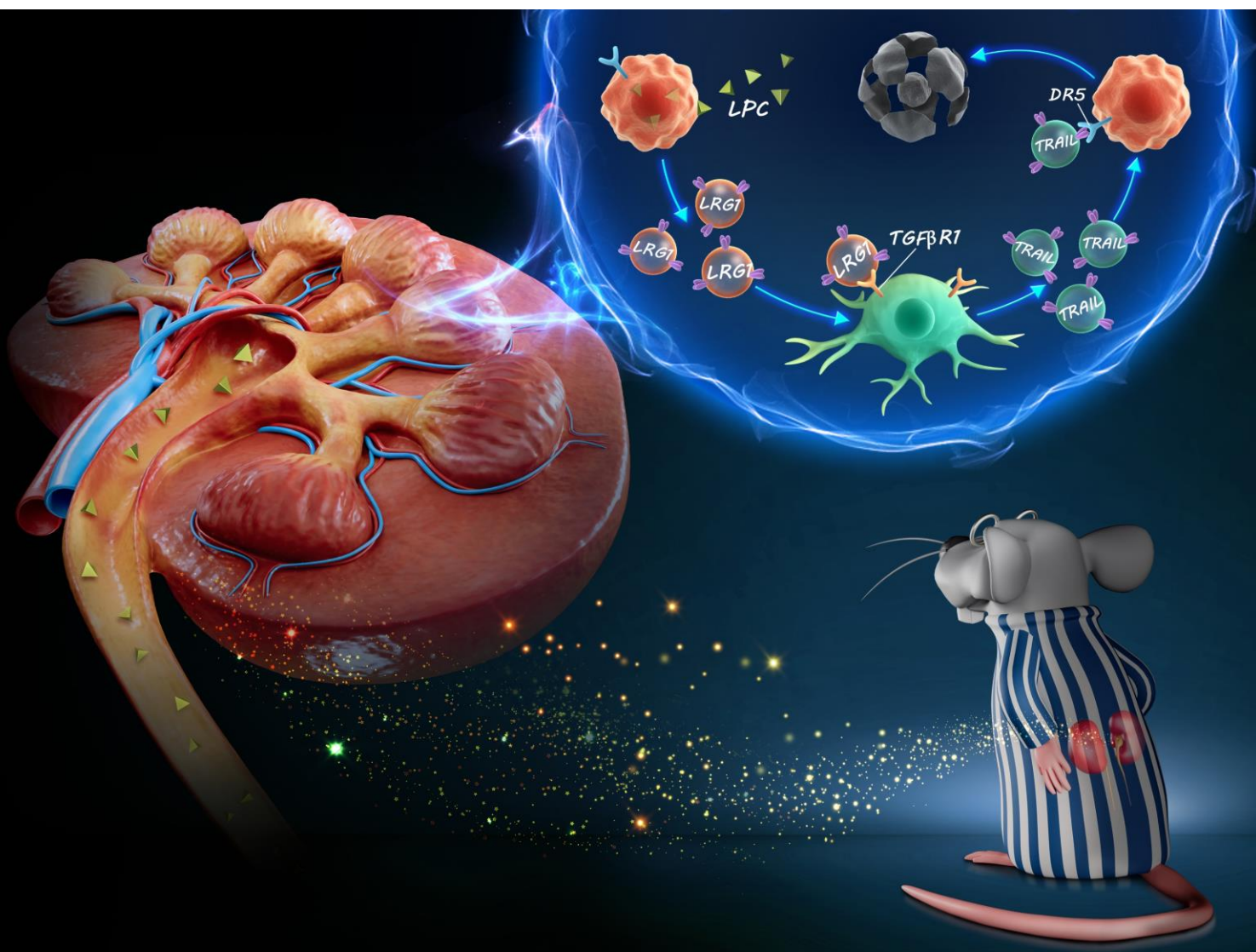
Y. Zhu et al. pp.307



IVYSPRING
INTERNATIONAL PUBLISHER

Theranostics

The Forum for Diagnostics, Imaging, and Therapy Research



Inside Back Cover:

Tubular epithelial cell-to-macrophage communication forms a negative feedback loop via extracellular vesicle transfer to promote renal inflammation and apoptosis in diabetic nephropathy

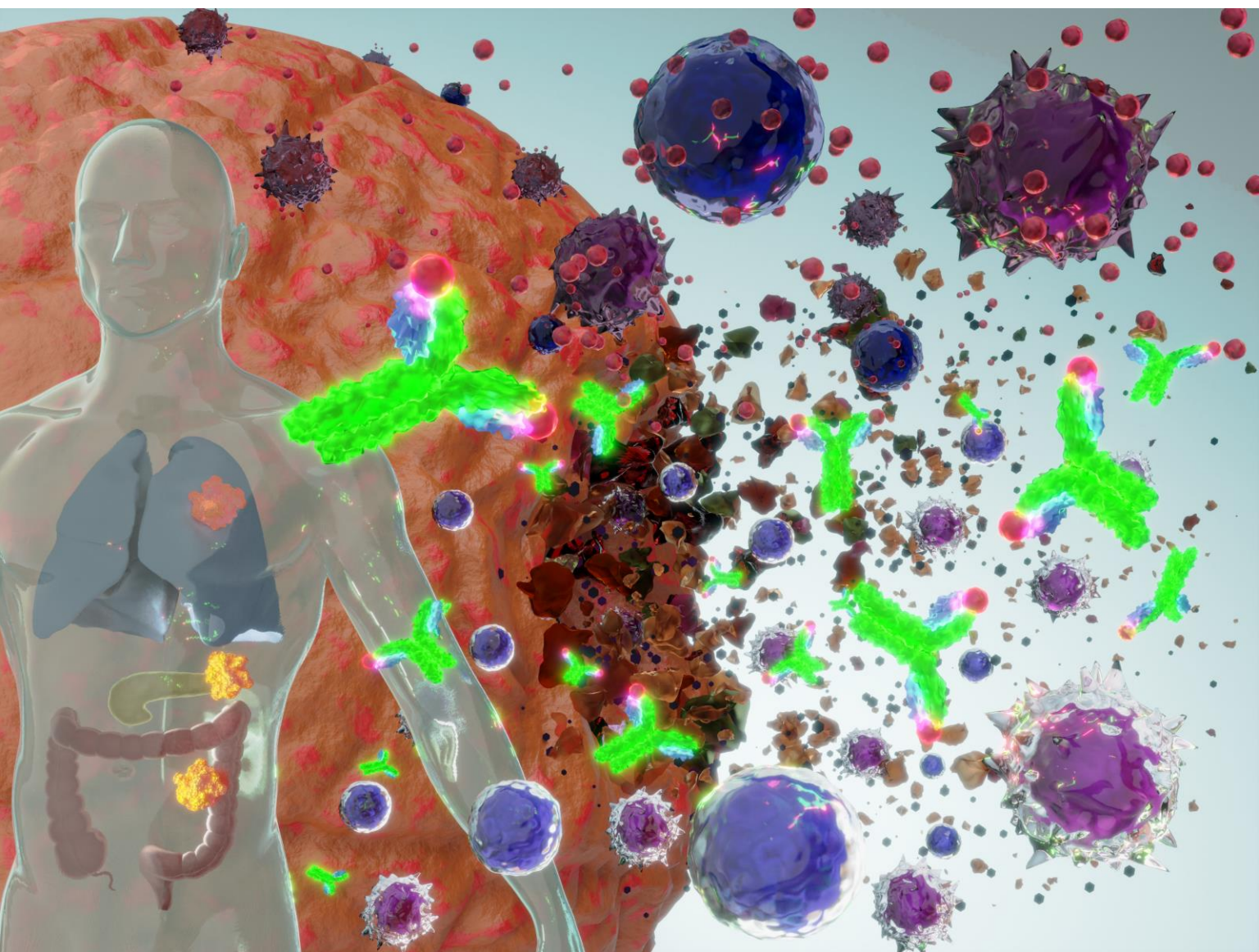
W.-J. Jiang et al. pp.324



IVYSPRING
INTERNATIONAL PUBLISHER

Theranostics

The Forum for Diagnostics, Imaging, and Therapy Research



Back Cover:

Targeting protumor factor chitinase-3-like-1 secreted by Rab37 vesicles for cancer immunotherapy

P.-S. Yang et al. pp.340



IVYSPRING
INTERNATIONAL PUBLISHER