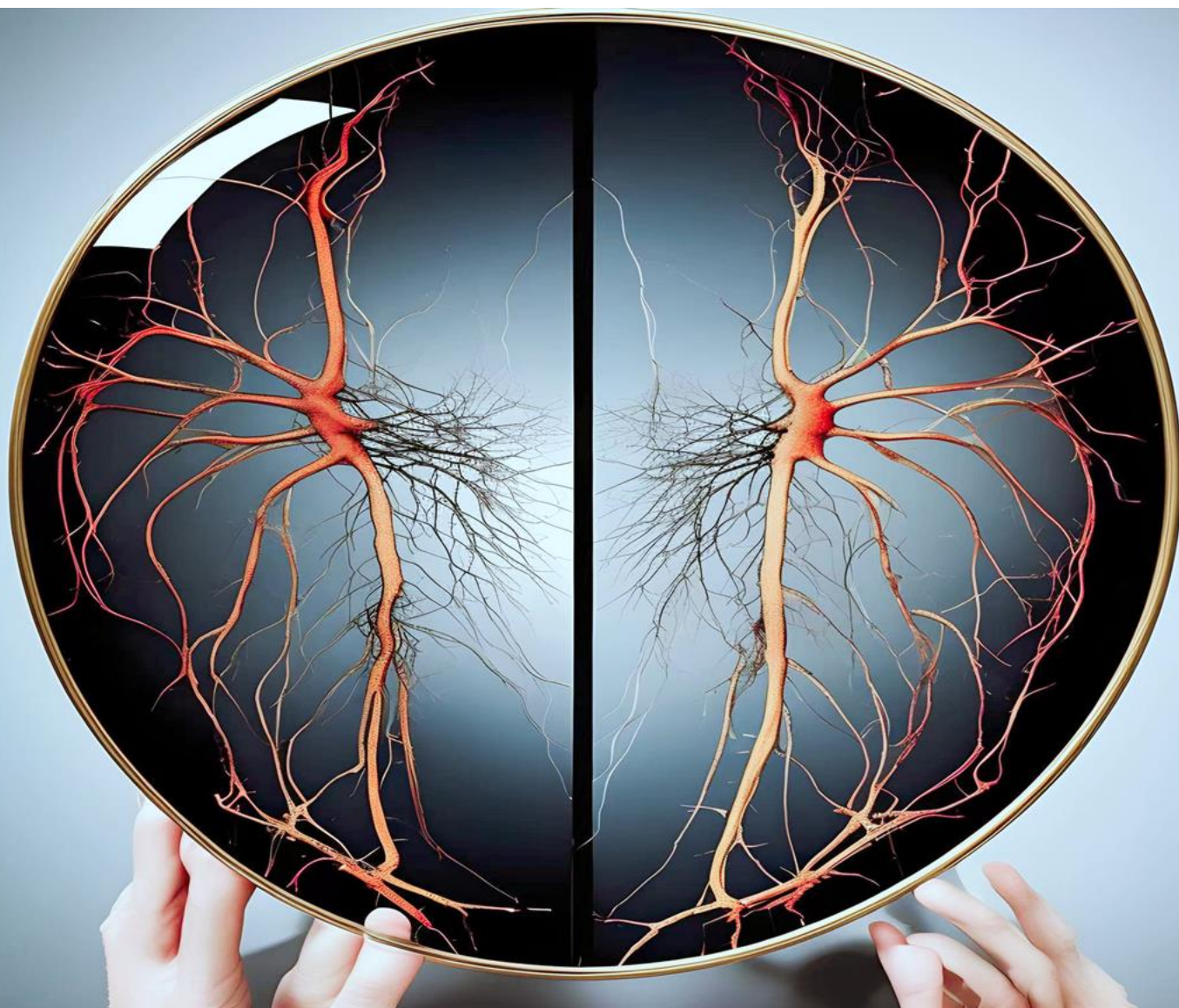


# Theranostics

The Forum for Diagnostics, Imaging, and Therapy Research



## Front Cover:

**The landscape of abnormal pathway activation confers COVID-19 patients' molecular sequelae earlier than clinical phenotype**

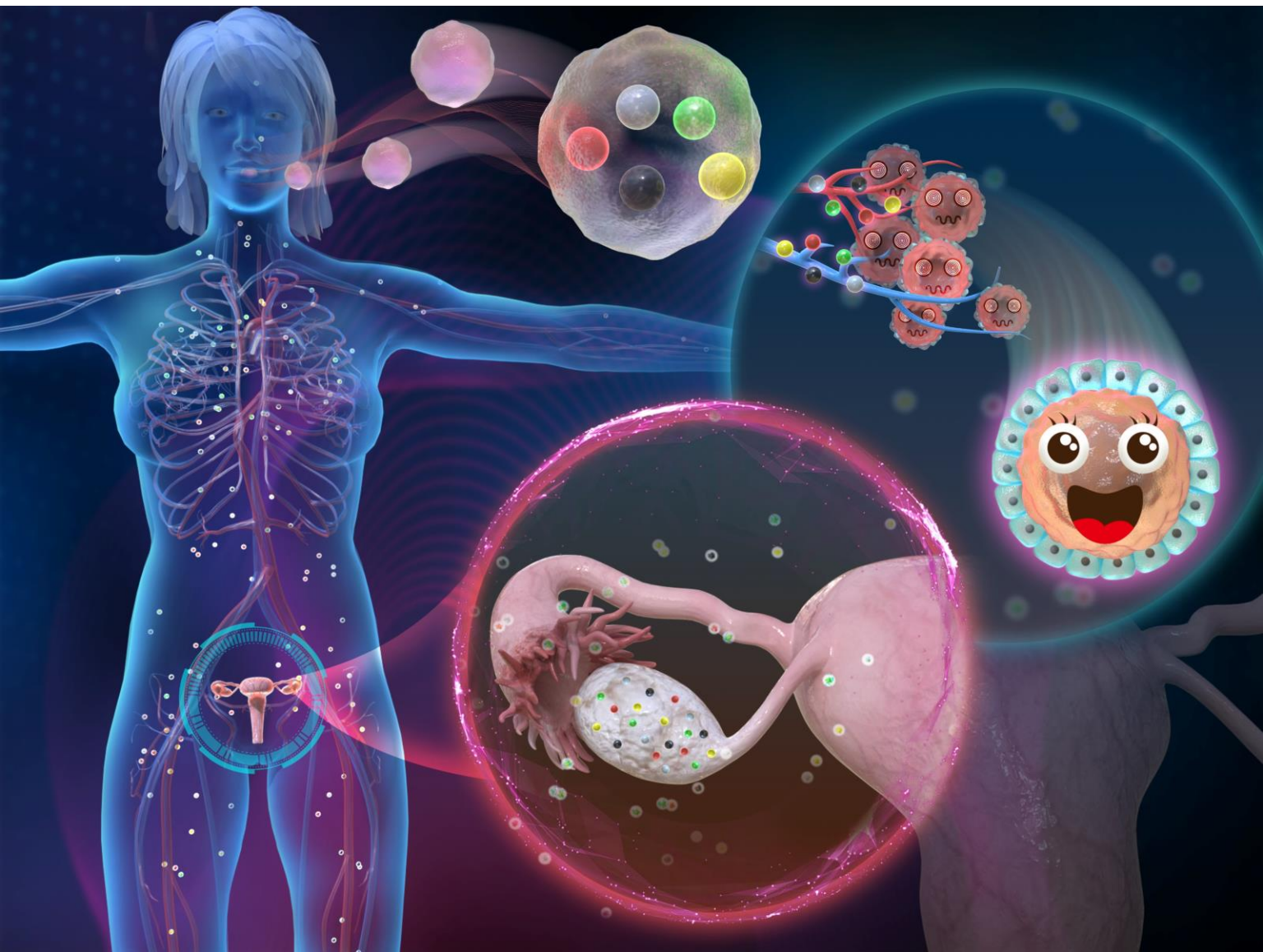
*Xiuli Zhang et al. pp.3451*



IVYSPRING  
INTERNATIONAL PUBLISHER

# Theranostics

The Forum for Diagnostics, Imaging, and Therapy Research



## Back Cover:

**The metallic compound promotes primordial follicle activation and ameliorates fertility deficits in aged mice**

*Lincheng Han et al. pp.3131*



**IVYSPRING**  
INTERNATIONAL PUBLISHER