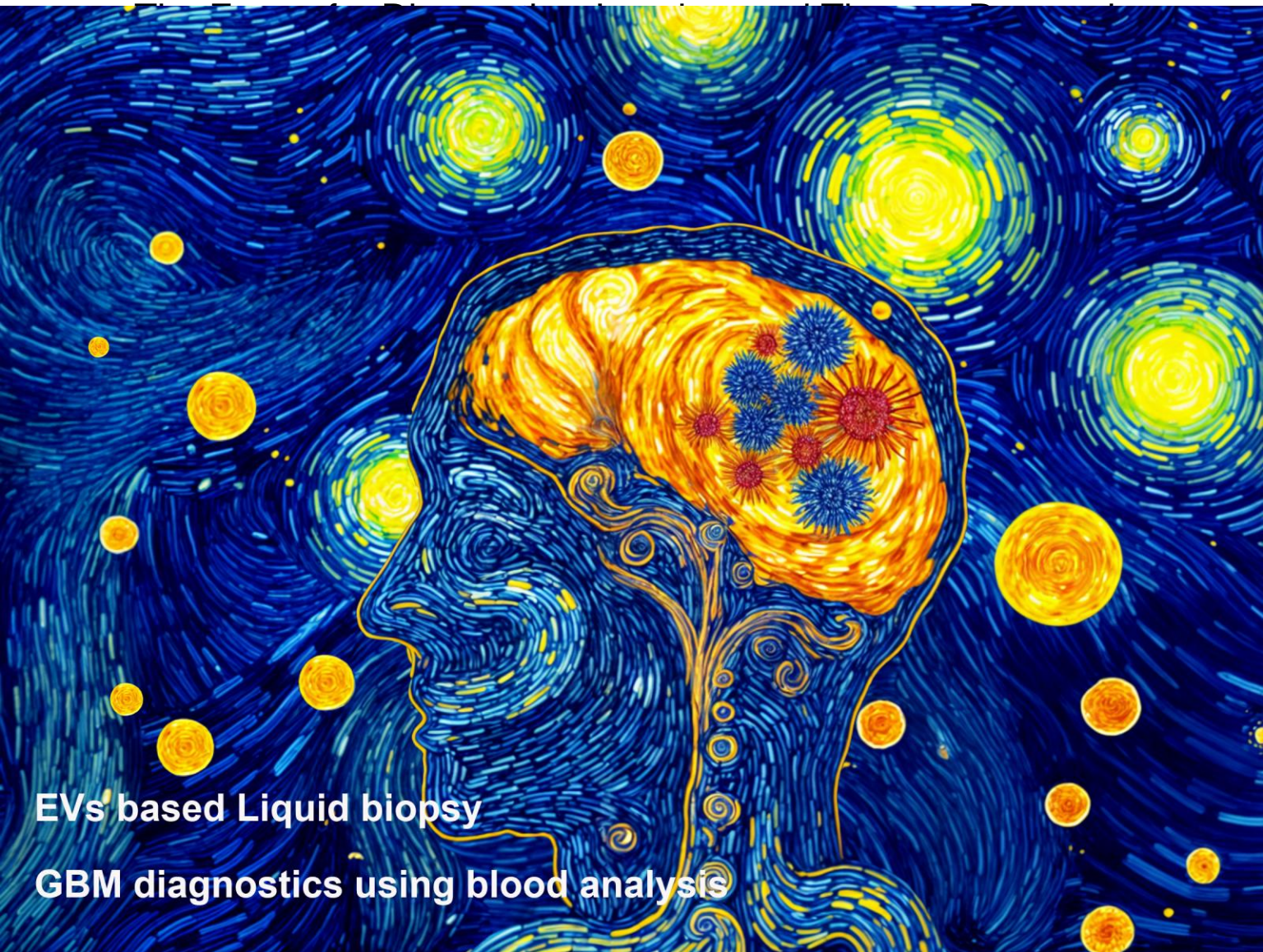


Theranostics



EVs based Liquid biopsy
GBM diagnostics using blood analysis

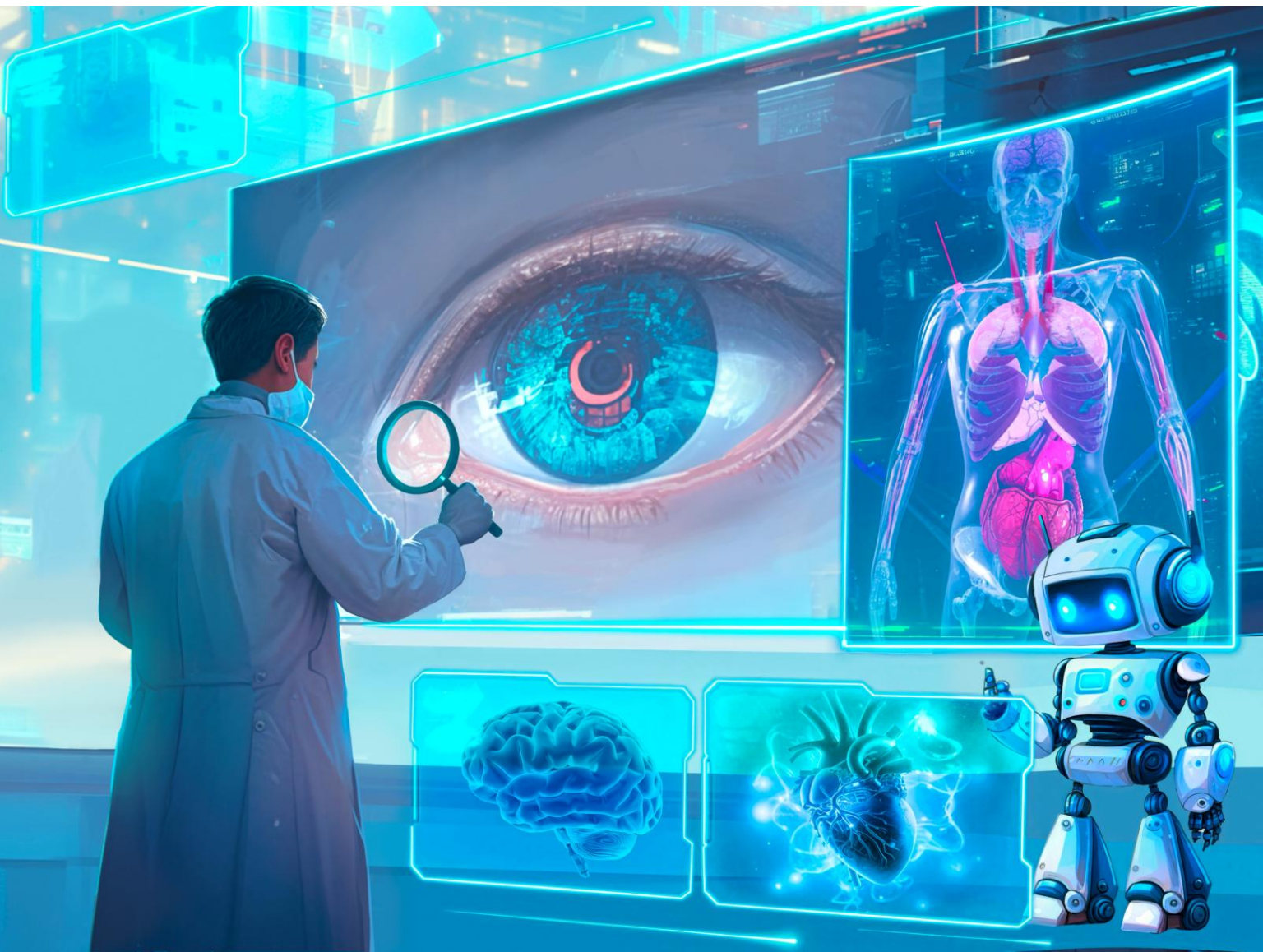
Front Cover:
Plasma extracellular vesicles from recurrent GBMs carrying LDHA to activate glioblastoma stemness by enhancing glycolysis
Xin Zhang et al. pp.3655



IVYSPRING
INTERNATIONAL PUBLISHER

Theranostics

The Forum for Diagnostics, Imaging, and Therapy Research



Inside Front Cover:

Artificial intelligence-enhanced retinal imaging as a biomarker for systemic diseases

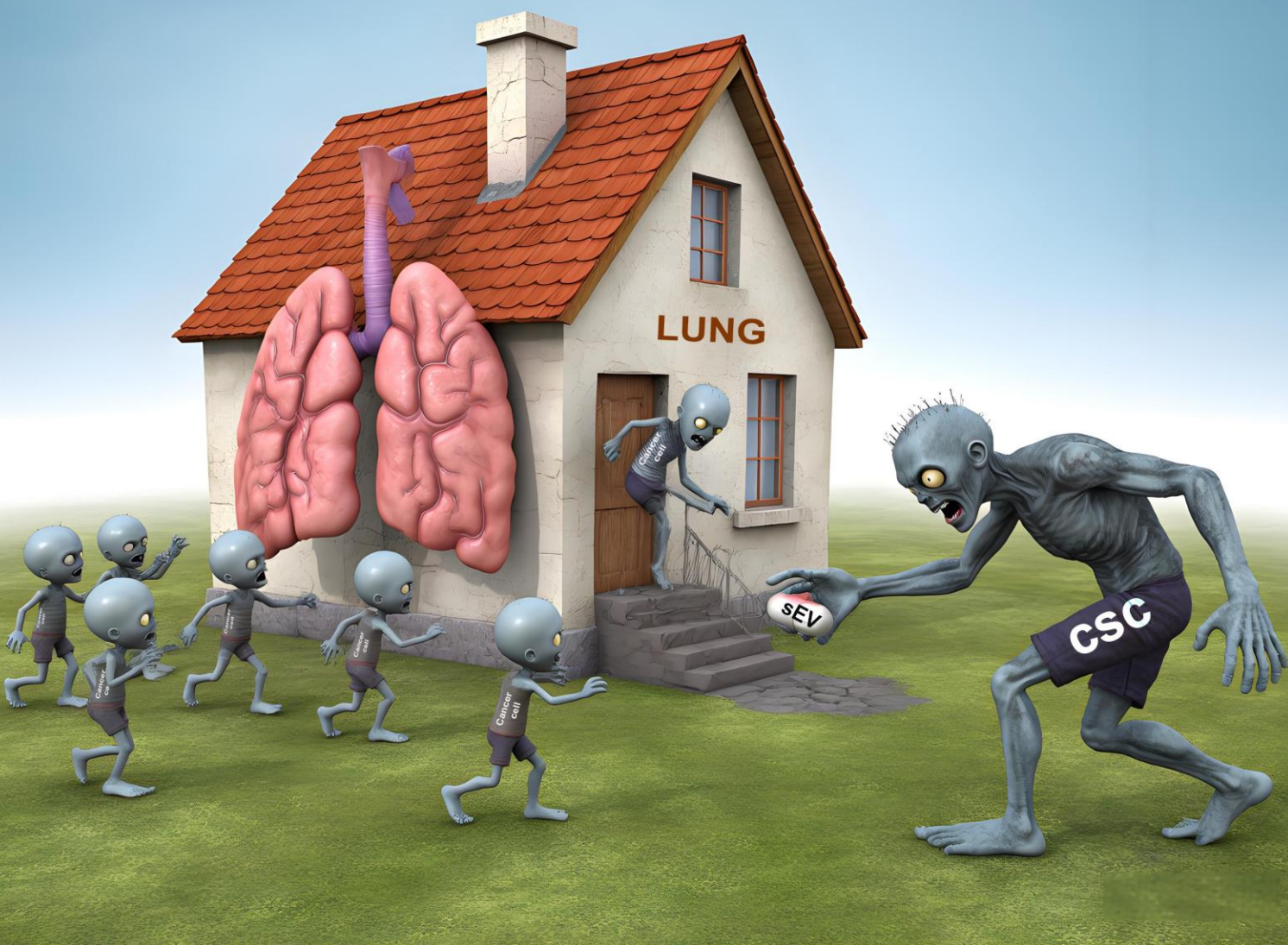
Jinyuan Wang et al. pp. 3223



IVYSPRING
INTERNATIONAL PUBLISHER

Theranostics

The Forum for Diagnostics, Imaging, and Therapy Research



Inside Back Cover:

A novel pathway for stemness propagation and chemoresistance in non-small cell lung cancer via phosphorylated PKM2-loaded small extracellular vesicles

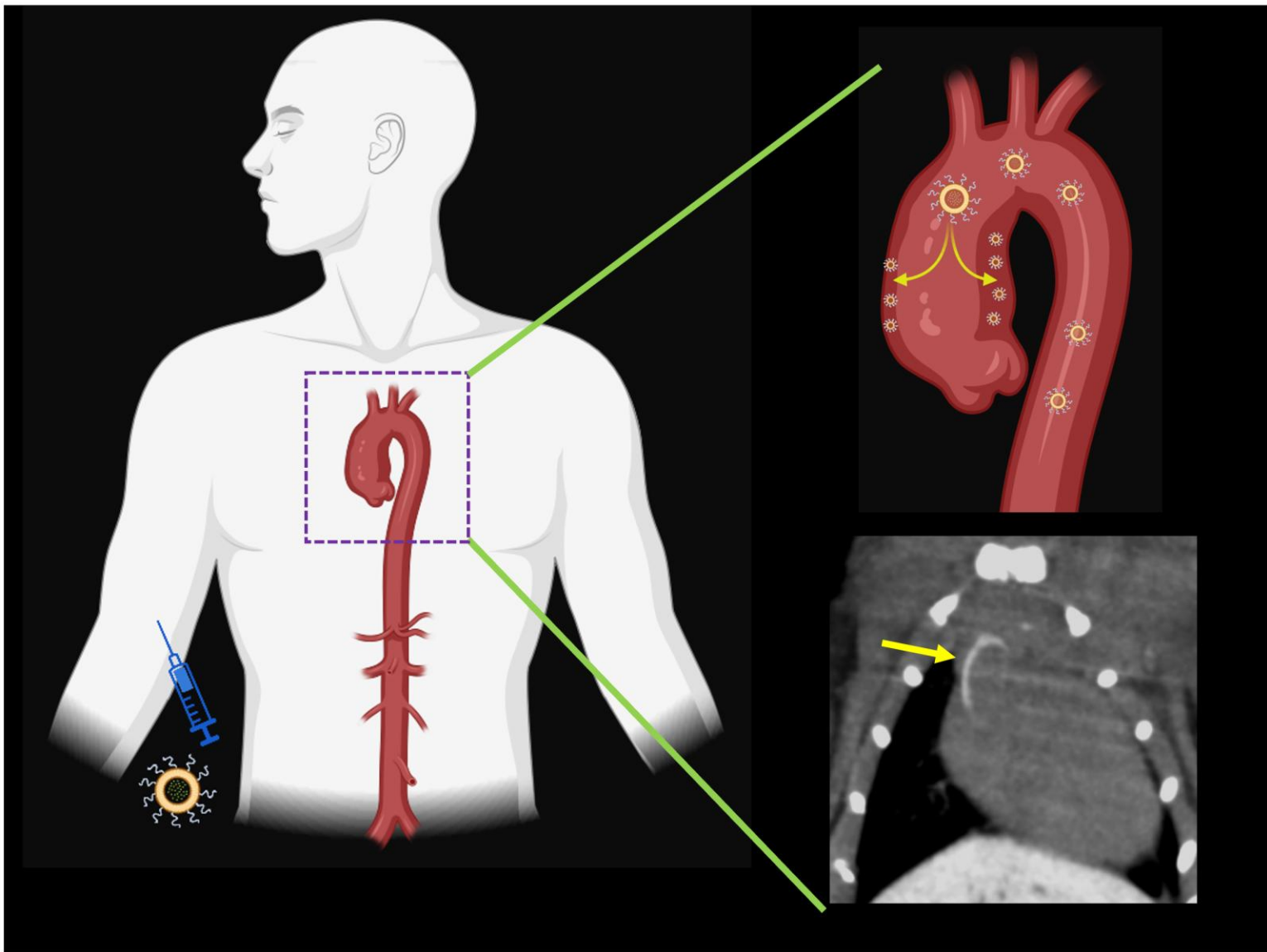
Jingyi Wang et al. pp. 3439



IVYSPRING
INTERNATIONAL PUBLISHER

Theranostics

The Forum for Diagnostics, Imaging, and Therapy Research



Back Cover:

Nanoparticle contrast-enhanced computed tomography of sporadic aortic aneurysm and dissection: Effect of nanoparticle size and contrast agent dose

Laxman Devkota et al. pp. 3462



IVYSPRING
INTERNATIONAL PUBLISHER