

Scheme 1

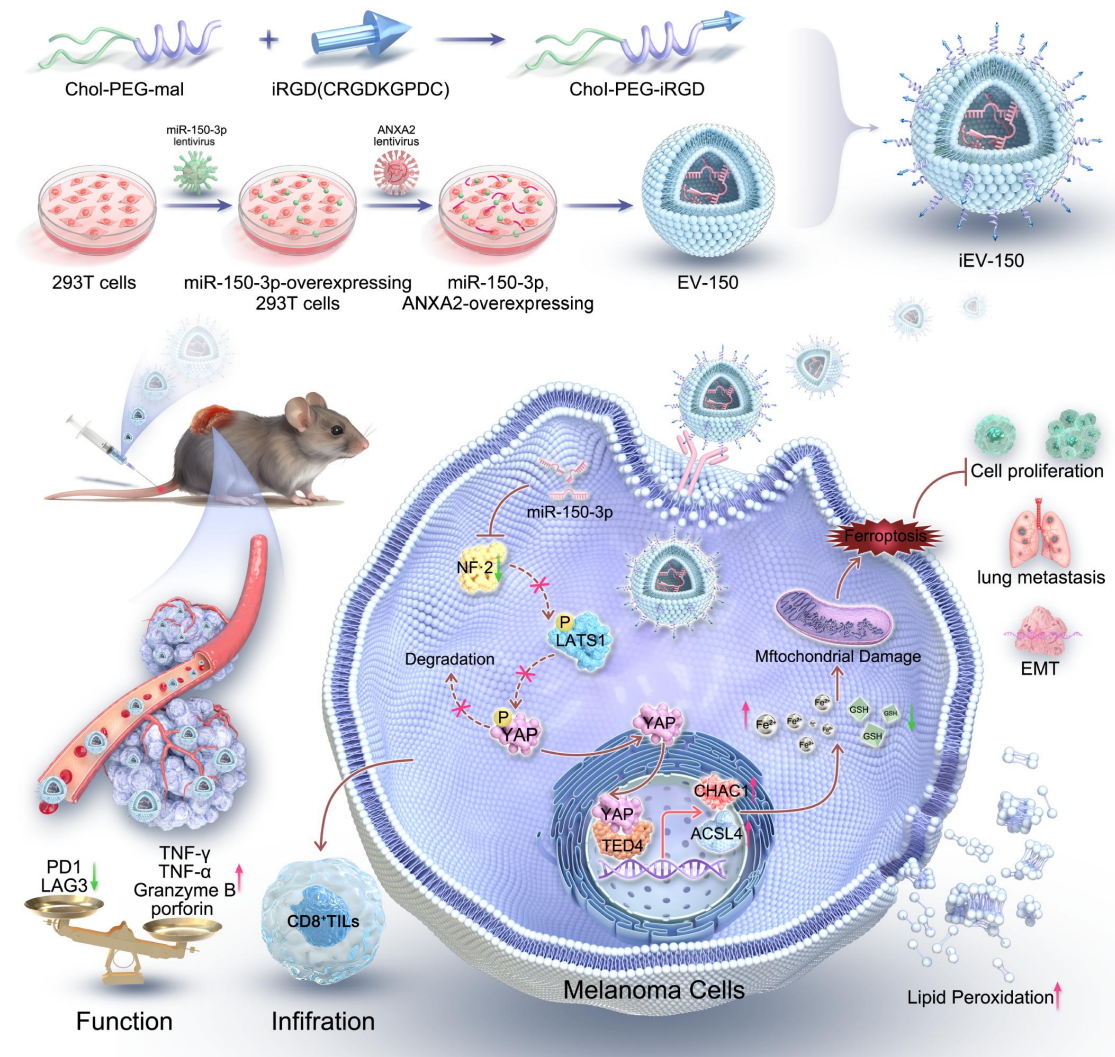


Figure 1

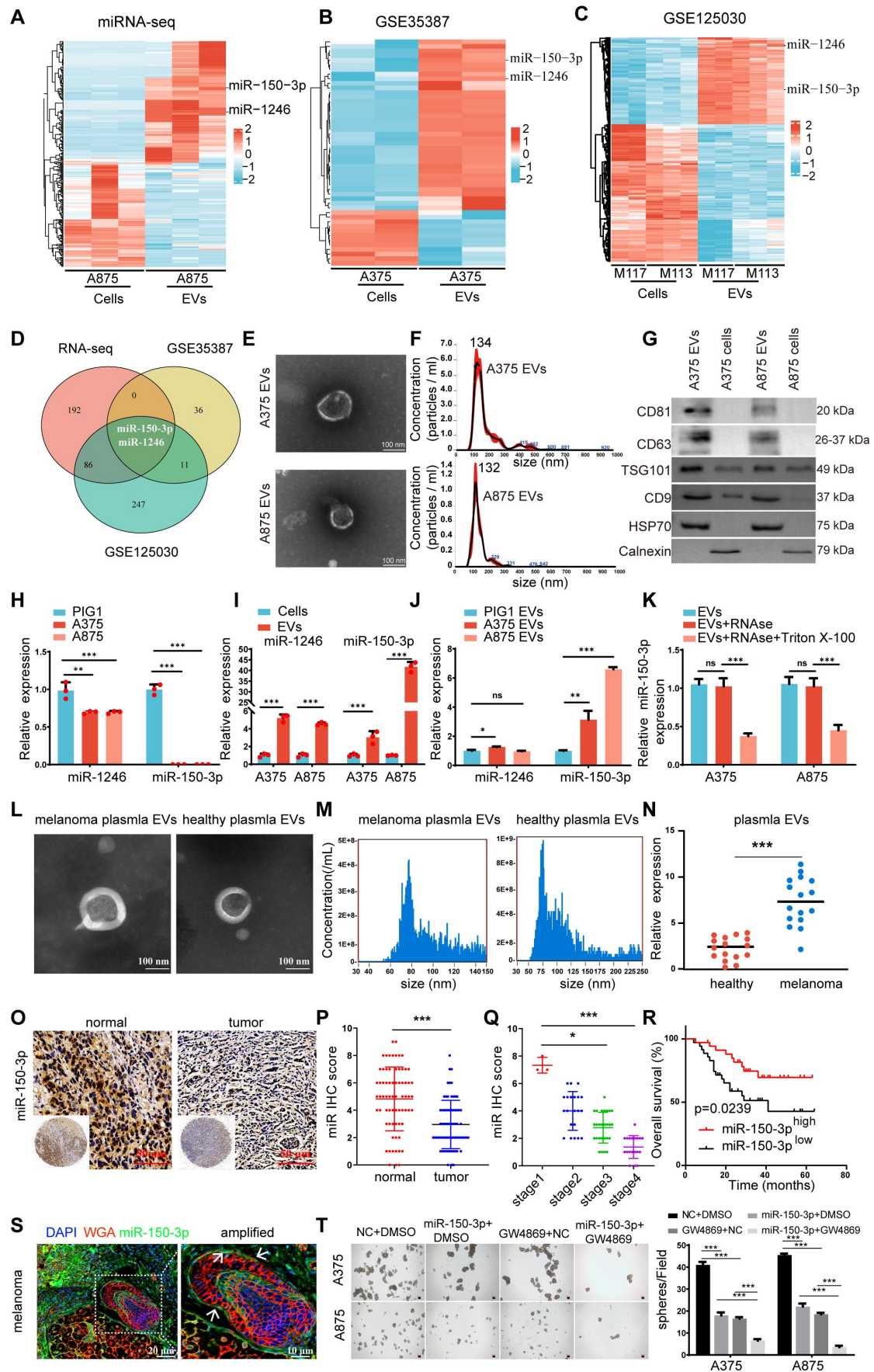




Figure 2

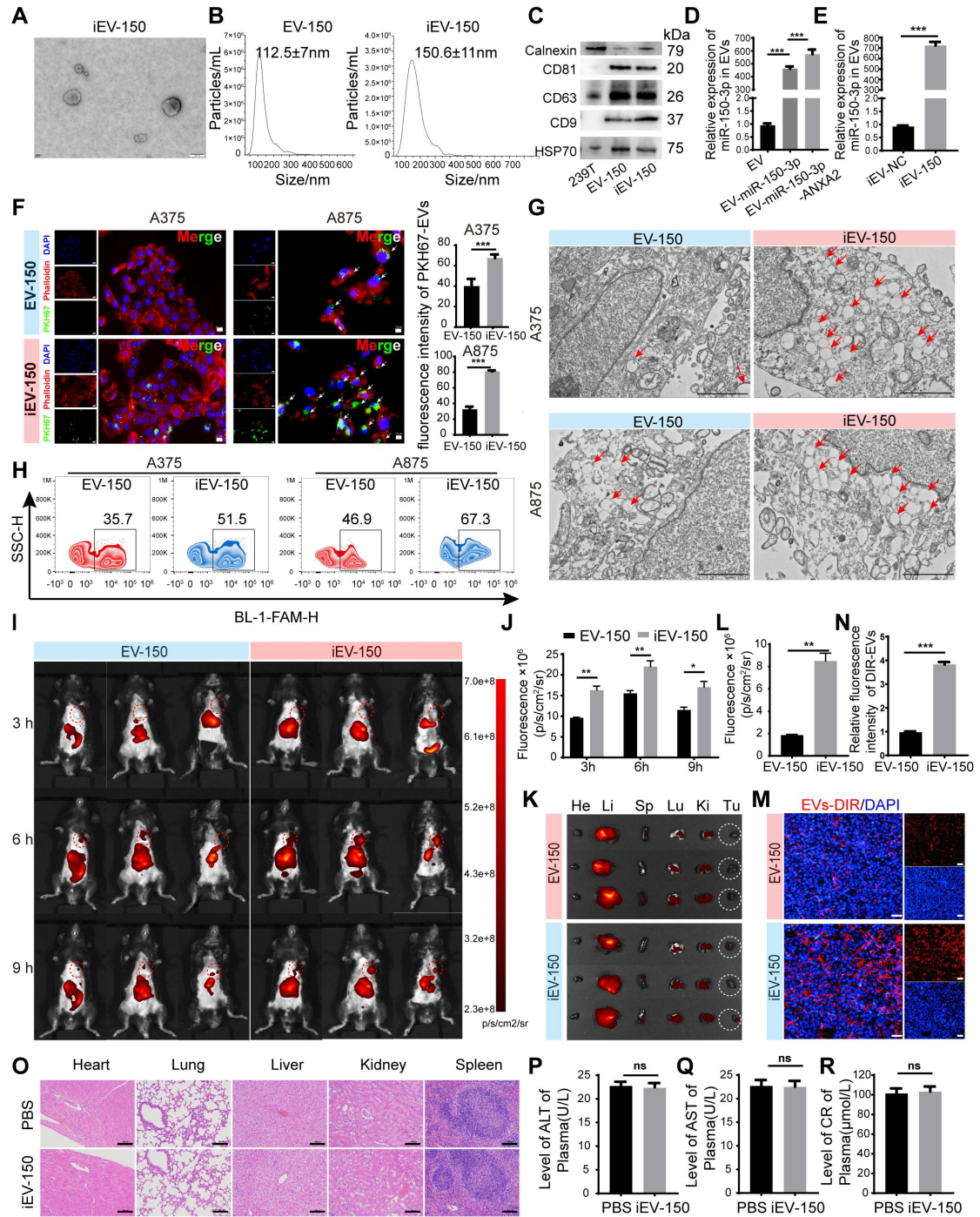


Figure 3

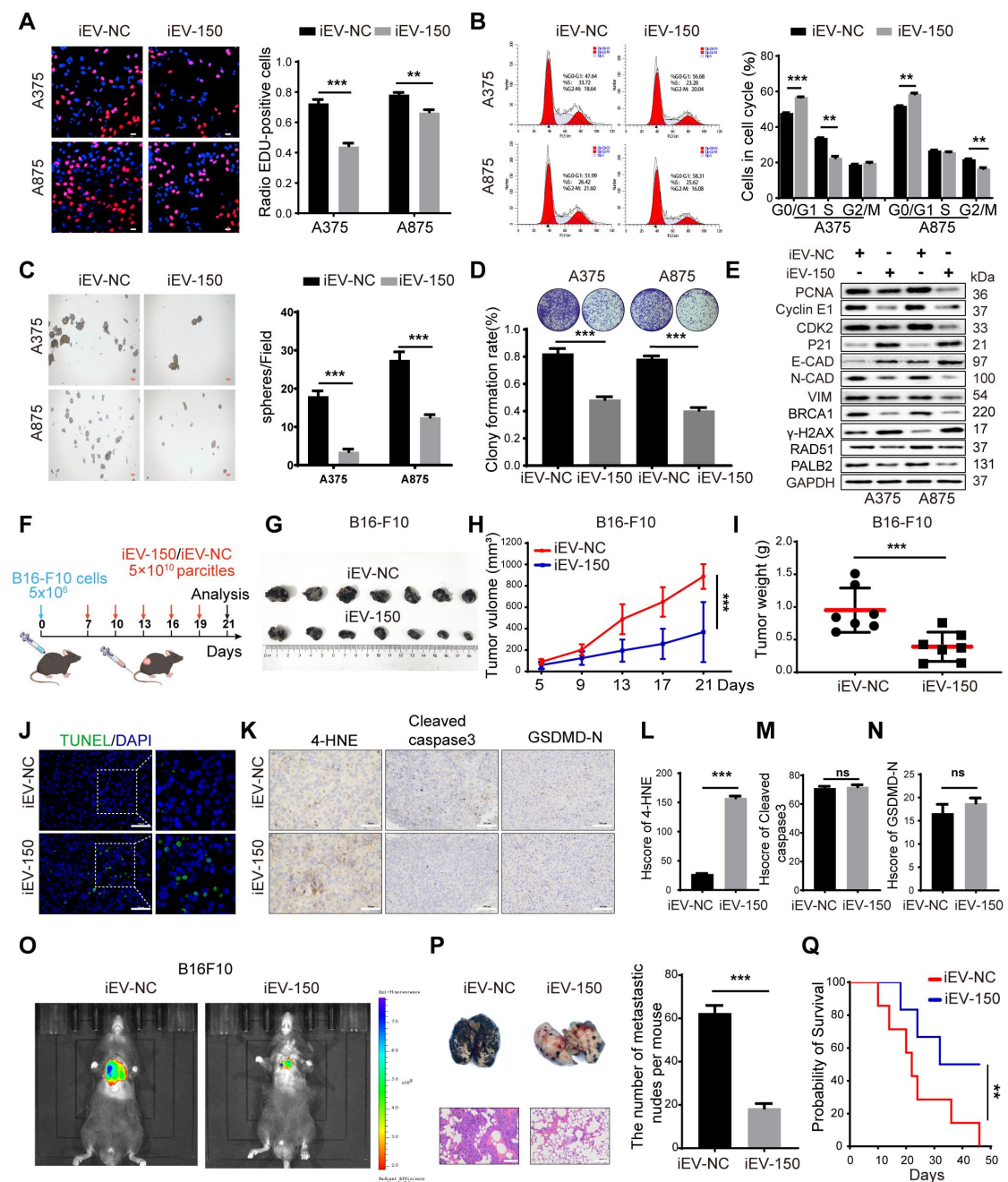


Figure 4

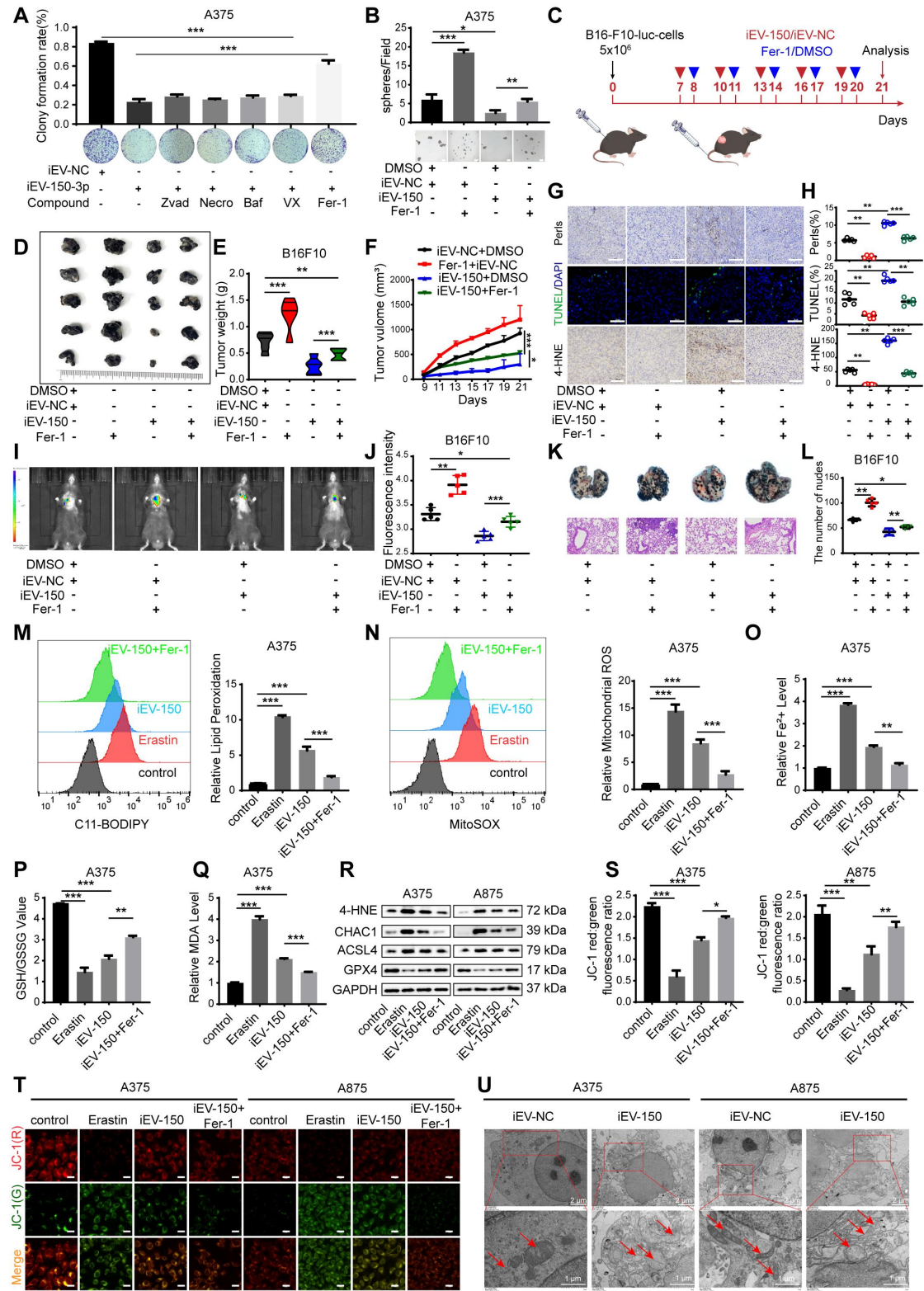
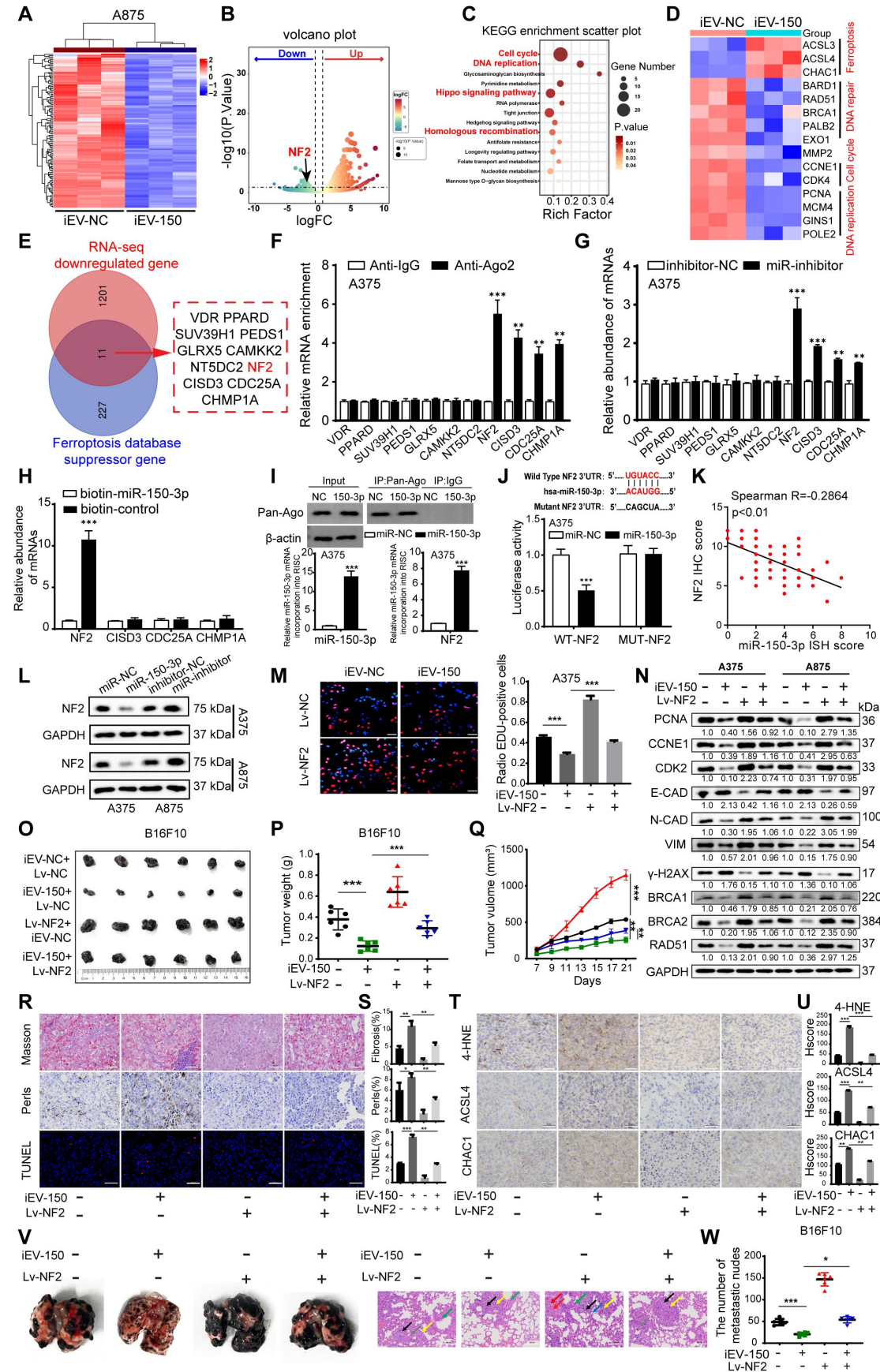




Figure 5



**A**

GST GST-NF2 GST GST-NF2				GST GST-NF2 GST GST-NF2			
iEV-150	-	+	-	+	iEV-150	-	+
LATS1-His	+	+	+	+	LATS1-His	+	+
Ratio	-	-	1.0	0.31	Ratio	-	1.0

Anti-His  
Anti-GST  
Input A375 Pull down Input A875 Pull down

**B**

SFB-LATS1 + + +				SFB-LATS1 + + +			
HA-NF2	-	+	-	+	HA-NF2	-	+
iEV-150	-	+	-	+	iEV-150	-	+
Ratio	-	-	1.0	0.39	Ratio	-	1.0

HA  
Flag  
HA  
Flag  
GAPDH  
Input IP: Flag Input IP: Flag  
A375 A875

**C**

LATS1 NF2 DAPI Merge

A375 iEV-NC iEV-150  
A875 iEV-NC iEV-150

**D**

A375				A875			
iEV-NC	+	-	+	+	iEV-NC	+	-
iEV-150	-	+	-	-	iEV-150	-	+
Lv-NC	+	+	+	+	Lv-NC	+	+
Lv-NF2	-	-	-	-	Lv-NF2	-	-

p-LATS1 (S909) 145 kDa  
p-LATS1 (T1079) 145 kDa  
LATS1 145 kDa  
p-YAP (S127) 79 kDa  
YAP 79 kDa  
ACSL4 79 kDa  
CHAC1 39 kDa  
NF2 75 kDa  
GAPDH 37 kDa

**E**

iEV-150+ Lv-NF2 +Erastin  
Lv-NF2+ iEV-NC +Erastin  
iEV-150+ Lv-NC +Erastin  
iEV-NC+ Lv-NC +Erastin  
Control

C11-BODIPY

Relative Lipid Peroxidation

A375

\*\*\*

iEV-150 - + - +  
Lv-NF2 - - + +  
Erastin + + + +

**F**

A375

iEV-150	-	-	+	-	+
Lv-NF2	-	-	-	+	+
Erastin	-	+	+	+	+

4-HNE 72 kDa  
GPX4 17 kDa  
ACSL4 79 kDa  
CHAC1 39 kDa  
GAPDH 37 kDa

**G**

A375

Relative Fe<sup>2+</sup> Level

\*\*\*

iEV-150 - + - +  
Lv-NF2 - - + +  
Erastin + + + +

**H**

A375

MDA (nmol/mgprot)

\*\*\*

iEV-150 - + - +  
Lv-NF2 - - + +  
Erastin + + + +

**I**

A375

GSH/GSSG Value

\*\*\*

iEV-150 - + - +  
Lv-NF2 - - + +  
Erastin + + + +

**J**

A375

JC-1 red:green fluorescence ratio

\*\*\*

iEV-150 - + - +  
Lv-NF2 - - + +  
Erastin + + + +

**K**

Erastin

Control	iEV-NC+Lv-NC	iEV-150+Lv-NC	Lv-NF2+iEV-NC	iEV-150+Lv-NF2
Merge				
JC-1(G)				
JC-1(R)				

**L**

Erastin

Control	iEV-NC+Lv-NC	iEV-150+Lv-NC	Lv-NF2+iEV-NC	iEV-150+Lv-NF2
Merge				
JC-1(G)				
JC-1(R)				

A375 A875



Figure 7

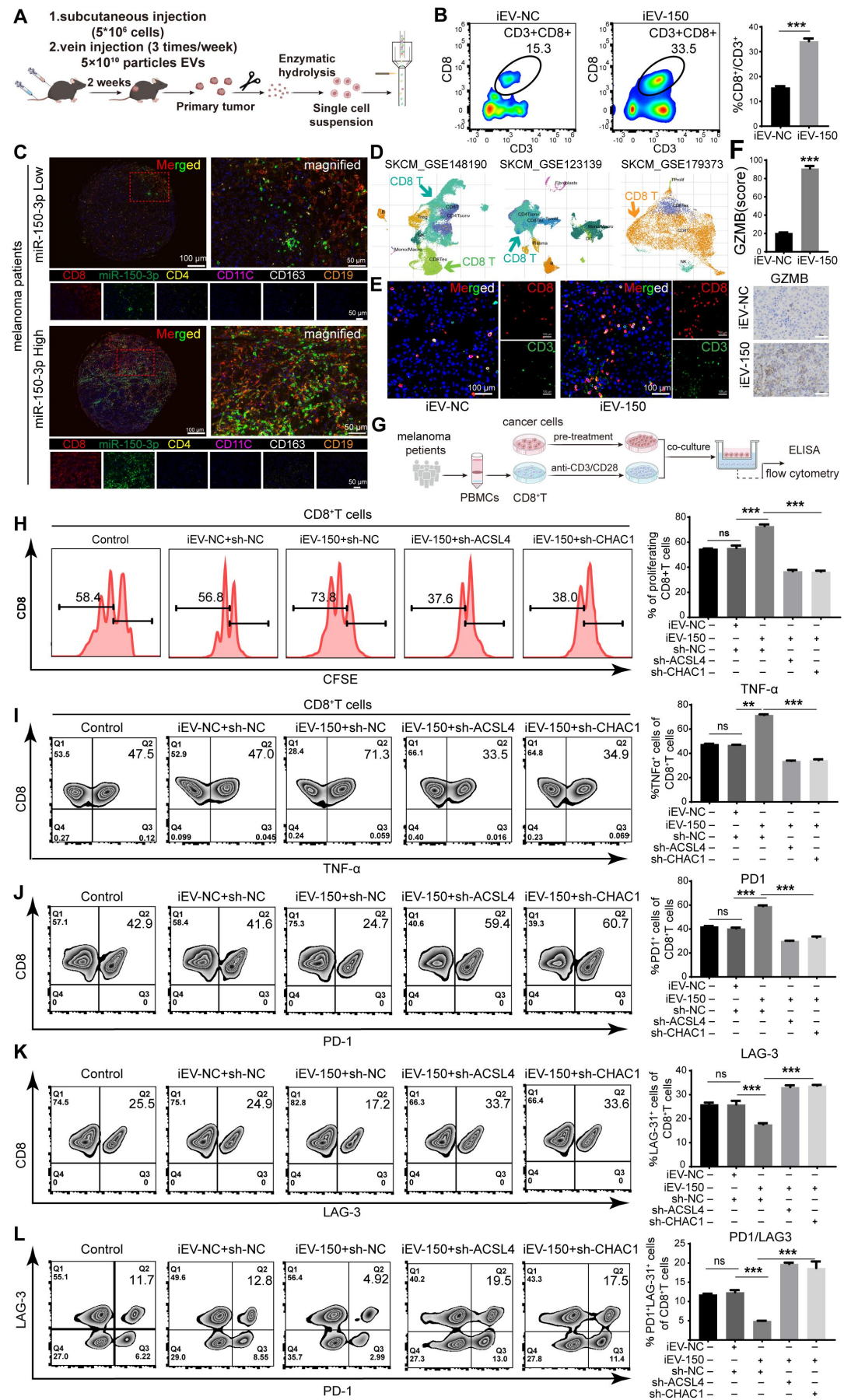




Figure 8

