

Supplementary Information

Pancreas-Targeted NIR Fluorophores for Dual-Channel Image-Guided Abdominal Surgery

Hideyuki Wada^{1,2}, Hoon Hyun¹, Christina Vargas^{1,3}, Julien Gravier^{1,4}, GwangLi Park¹,
Sylvain Gioux¹, John V. Frangioni^{1,5,6}, Maged Henary^{7*}, and Hak Soo Choi^{1,8*}

¹Division of Hematology/Oncology, Department of Medicine and ⁵Department of Radiology,
Beth Israel Deaconess Medical Center and Harvard Medical School, Boston, MA 02215

²Department of Gastroenterological Surgery II, Hokkaido University Graduate School of
Medicine, Sapporo 060-8638, Japan

³Division of Plastic and Reconstructive Surgery, Department of Surgery, Beth Israel Deaconess
Medical Center, Boston, MA 02215

⁴INSERM, CRI, U823, Institut Albert Bonniot, 38042 Grenoble, France

⁶Curadel, LLC, 377 Plantation Street, Worcester, MA 01605

⁷Department of Chemistry, Georgia State University, Atlanta, GA 30303

⁸Department of Cogno-Mechatronics Engineering, Pusan National University, Busan 609-735,
South Korea

*Corresponding authors:

Hak Soo Choi, Ph.D. Tel: 617-667-6024; Email: hchoi@bidmc.harvard.edu

or Maged Henary, Ph.D. Tel: 404-413-5566; Email: mhenary1@gsu.edu

The PDF file includes:

Figure S1. Intraoperative pancreas imaging in mice using T700-H and T700-F

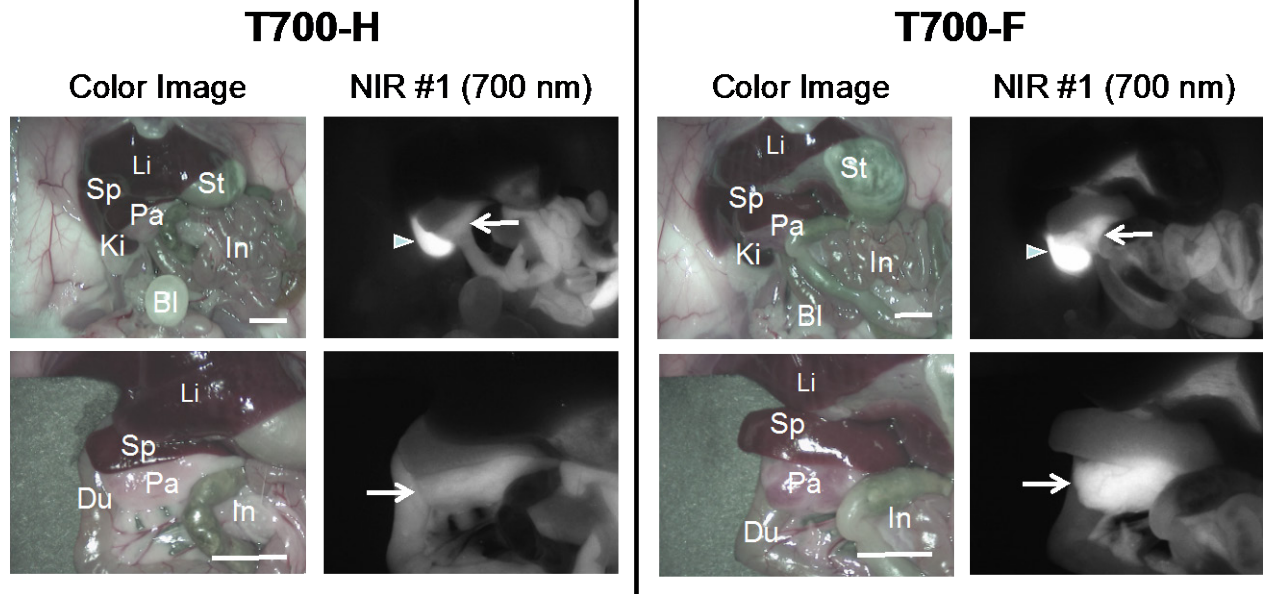


Figure S1. Intraoperative pancreas imaging in mice using T700-H and T700-F. 25 nmol of T700-H and 25 nmol of T700-F were injected intravenously into CD-1 mice 4 h prior to imaging (n = 3). Abbreviations used are: Bl, bladder; Du, duodenum; In, intestine; Ki, kidney; Li, liver; Pa, pancreas; Sp, spleen; St, Stomach. Arrows indicate pancreas and arrowheads indicate kidney. Scale bars = 1 cm. All NIR fluorescence images have identical exposure times and normalizations.