

Supplementary Materials

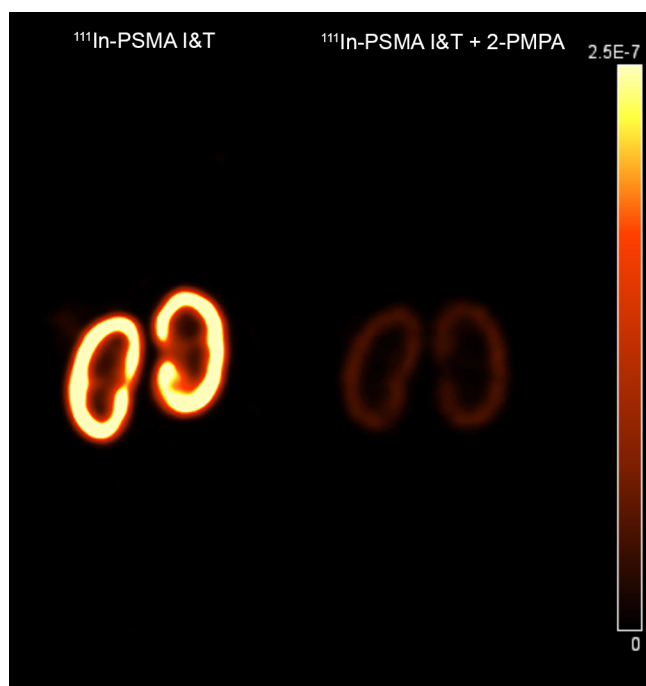


Fig. S1. Localization of $^{111}\text{In-PSMA I\&T}$ in mouse kidneys. SPECT/CT images of mice 1 h after injection of $^{111}\text{In-PSMA I\&T}$ (0.3 nmol, 20 MBq) without (left) or with (right) coinjection of 50 nmol 2-PMPA, showing tracer localization in the renal cortex.