

Figure S1

A. The expression of SLC3A1, SLC7A5 and ASCT1-3 was analyzed by qPCR in various breast cancer cells.

B. & C. The expression of SLC3A1 was correlated with the survival of breast cancer patients at the different histological stages.

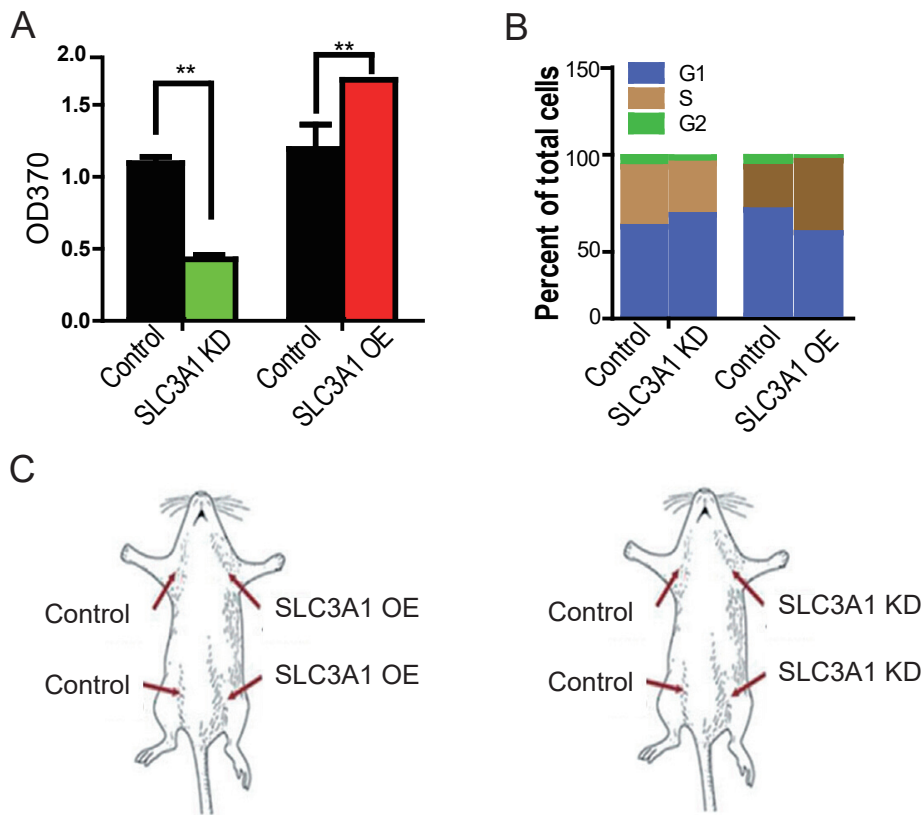


Figure S2 SLC3A1 promotes the proliferation of breast cancer cells

A. SLC3A1 increased incorporation of BrDu into breast cancer cells;

B. SLC3A1 increased subpopulation of cells in the S phase;

C. The schematic drawing for xenografted mouse model.

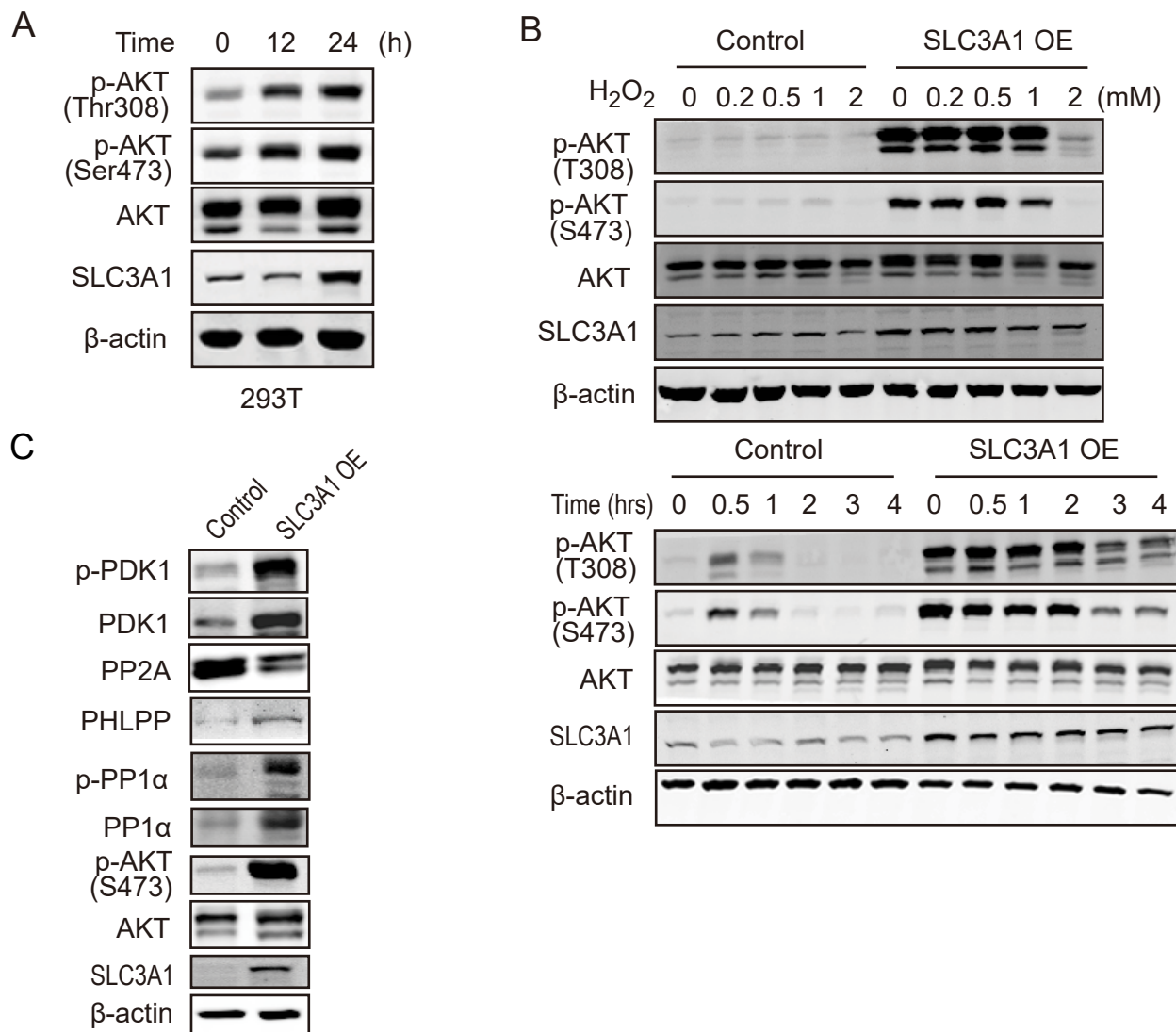


Figure S3 Cysteine activates AKT through upregulating SLC3A1

A. Overexpression of SLC3A1 activated AKT. The time course experiment was performed.

B. Determining the treating time and dose of H<sub>2</sub>O<sub>2</sub> on AKT inactivation.

C. Screening the potential regulator of AKT activation induced by SLC3A1 overexpression.