

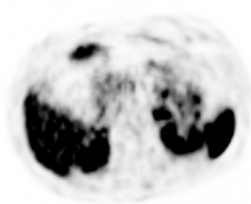
Supplementary Table 1: Display of tumor-background ratios for mean (SUV_{mean}) and maximum (SUV_{max}) standardized uptake values (and corresponding median) of the primary tumor (P), the hottest lymph node (LN) and visceral metastasis (M) for [⁶⁸Ga]Pentixafor, ⁶⁸Ga-DOTA-D-Phe-Tyr3-octreotide ([⁶⁸Ga]DOTATOC) and ¹⁸F-fluorodeoxy-glucose ([¹⁸F]FDG), respectively.

Grade	Ki67(%)	Patient	[⁶⁸ Ga]DOTATOC						[¹⁸ F]FDG						[⁶⁸ Ga]Pentixafor					
			P _{max} / B _{mean}	P _{mean} / B _{mean}	LN _{max} / B _{mean}	LN _{mean} / B _{mean}	M _{max} / B _{mean}	M _{mean} / B _{mean}	P _{max} / B _{mean}	P _{max} / B _{mean}	LN _{max} / B _{mean}	LN _{mean} / B _{mean}	M _{max} / B _{mean}	M _{mean} / B _{mean}	P _{max} / B _{mean}	P _{mean} / B _{mean}	LN _{max} / B _{mean}	LN _{mean} / B _{mean}	M _{max} / B _{mean}	M _{mean} / B _{mean}
1	1	#10	-	-	-	-	16.4	14.8	-	-	-	-	-	-	-	-	-	-	-	
1	2	#7	-	-	102.6	84.5	-	-	-	-	2.5	1.8	-	-	-	-	-	-		
1	2	#9	-	-	-	-	80.2	58.1	-	-	-	-	4.4	3.2	-	-	-	-		
Median of G1 NET			-	-	102.6	84.5	48.3	36.5	-	-	2.5	1.8	4.4	3.2	-	-	-	-		
2	5	#5	-	-	-	-	23.8	23.1	-	-	-	-	5	3.9	-	-	-	-		
2	8	#6	77.4	58.9	-	-	-	-	-	-	-	-	-	-	-	-	-	-		
2	10	#2	14.3	10	18.7	14.8	22.6	12.2	2.4	1.9	2.9	2.3	2.2	2.1	3.8	2.3	-	-		
2	10	#4	139.4	87.5	-	-	70.7	64.2	19.5	15.8	-	-	23	19.4	4.8	2.9	-	-		
Median of G2 NET			77.4	58.9	18.7	14.8	46.7	38.2	11	8.9	2.9	2.3	23.6	10.8	4.3	2.6	-	-		
3	60	#1	-	-	-	-	-	-	-	-	-	-	5.2	4.4	-	-	-	-		
3	85	#3	-	-	-	-	-	-	3.7	3.0	-	-	-	-	5.6	3.3	5.3	3.1		
3	90	#8	-	-	-	-	3.2	2.2	7.2	2.6	4.5	4.2	8.6	4	2.4	1.2	3.1	1.4		
3	90	#11	48.4	34.8	-	-	-	-	3.2	1.8	1.5	1.1	3.8	2.3	3.2	1.6	2.9	1.3		
3	90	#12	-	-	4	2.3	-	-	-	-	8.6	2.9	-	-	-	-	2.2	1.3		
Median of G3 NET			48.4	34.8	4	2.3	3.2	2.2	3.7	2.6	4.5	2.9	6.2	3.2	3.2	1.6	3	1.4		

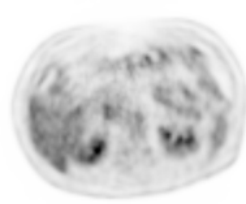
Supplementary Figure 1: Example of exclusively [⁶⁸Ga]Pentixafor-PET positive lymph node metastasis (arrows) in pancreatic neuroendocrine tumor (patient #3; Ki67: 85%). [⁶⁸Ga]DOTATOC = ⁶⁸Ga-DOTA-D-Phe-Tyr3-octreotide, [¹⁸F]FDG = ¹⁸F-fluorodeoxy-glucose.



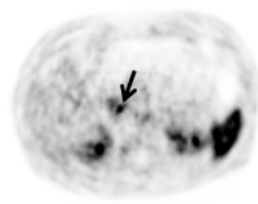
CT



[⁶⁸Ga]DOTATOC



[¹⁸F]FDG



[⁶⁸Ga]Pentixafor