

Glioma Dual-Targeting Nanohybrid Protein Toxin Constructed by Intein-Mediated Site-Specific Ligation for Multistage Booster Delivery

Yingzhi Chen, Meng Zhang, Hongyue Jin, Dongdong Li, Fan Xu, Aihua Wu, Jinyu Wang, and

Yongzhuo Huang*

Supporting Information

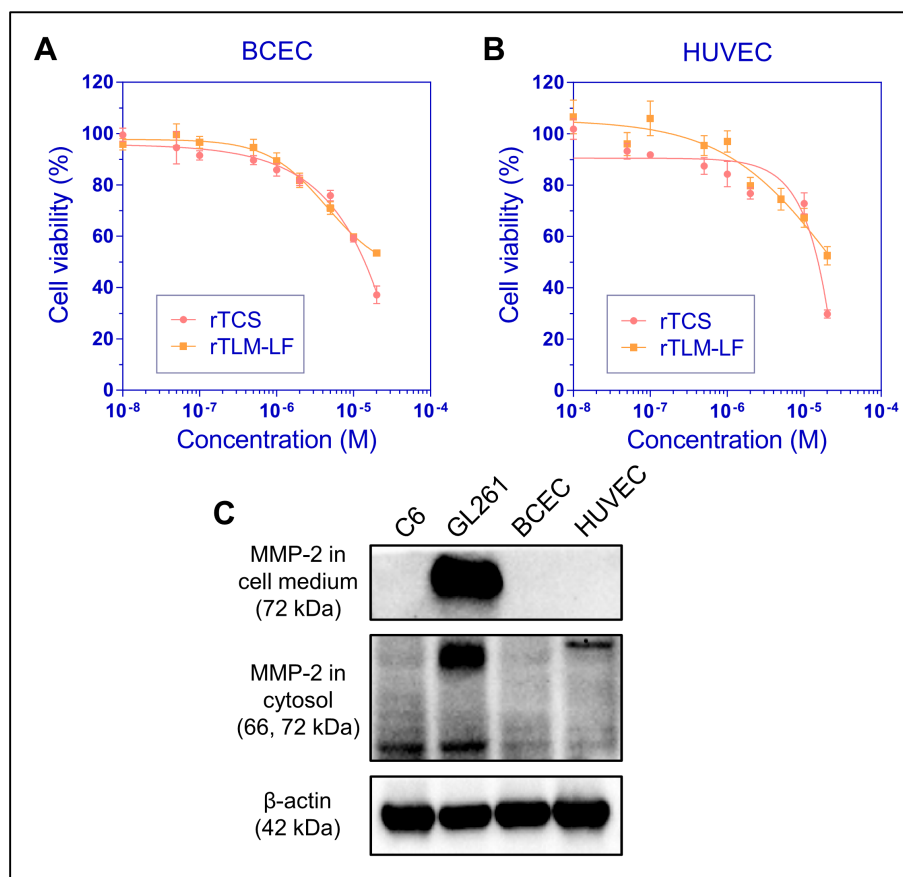


Figure S1. Cytotoxicity of rTCS and rTLM-LF in (A) BCEC and (B) HUVEC cells. (C) MMP-2 expression level in C6, GL621, BCEC, and HUVEC cells.

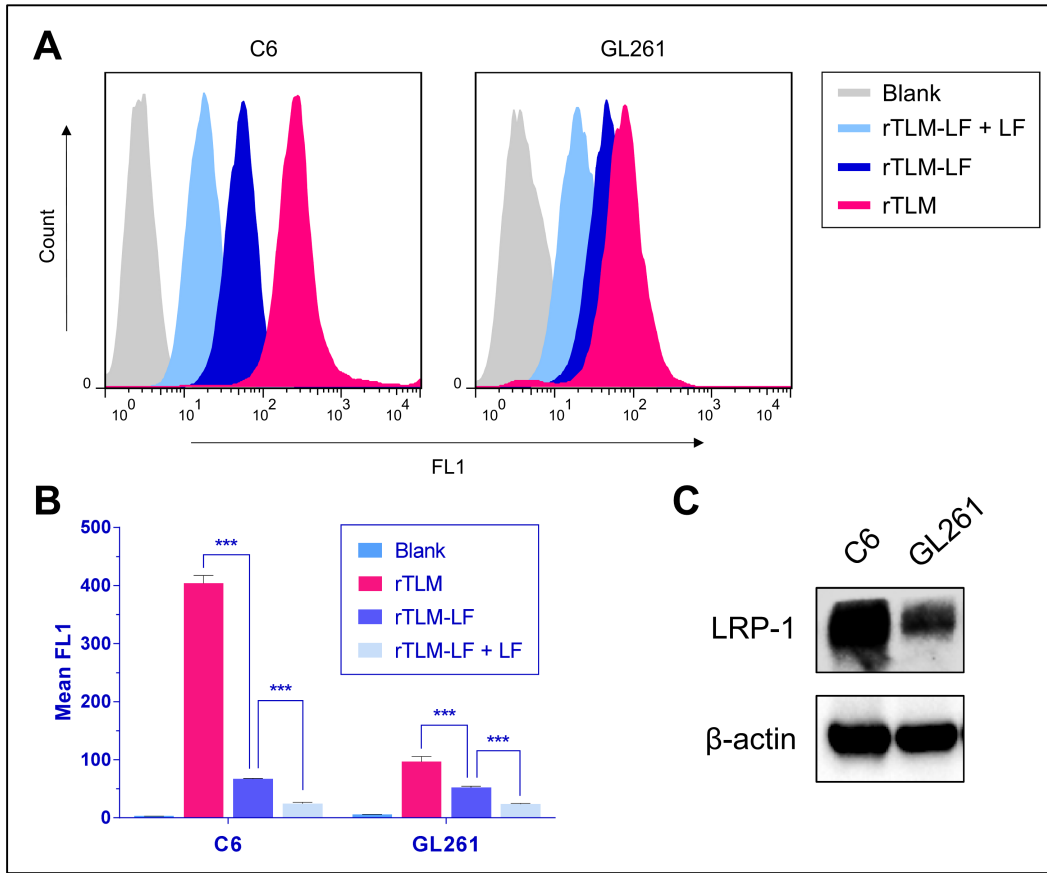


Figure S2. Cellular uptake assay of rTLM, rTLM-LF, and rTLM-LF pretreated with LF in C6 (A) and GL261 cells (B) measured by flow cytometry. (C) LRP-1 expression in C6 and GL261 cells. Statistical analysis was conducted by one-way ANOVA test using GraphPad Prism. (***) $p < 0.001$)

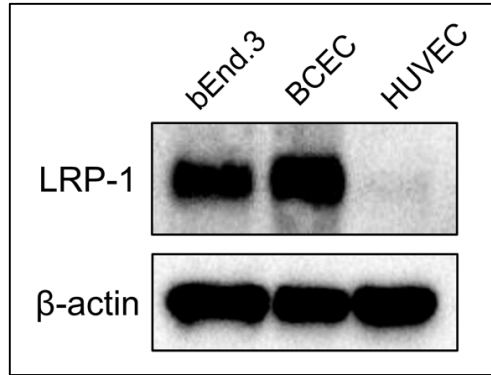


Figure S3. LRP-1 expression level in the bEnd.3, BCEC, and HUVEC cells.

Protein sequence of recombinant TCS-LMWP-MSP

MDVSFRLSGATSSSYGVFISNLRKALPNERKLYDIPLLRSSLPGSQRYALIHLTNYADETI
 SVAIDVTNVYIMGYRAGDTSYFFNEASATEAAKYVFKDAMRKVTLPYSGNYERLQTAA
 GKIRENIPLGLPALDSAITTLFYYNANSAASALMVLIQSTSEAARYKFIEQQIGKRVDKTF
 LPSLAIISLENSWSALSQIQIASTNNGQFESPVVLINAQNQRVTITNVDAGVVTSNIALLL
 NRNNMAGGGVSRRRRRRGRRRRGGGPLGLAG

The sequences in red, orange and blue are TCS, LMWP and MSP, respectively. The “GGG” sequences served as a flexible linker between different domains.