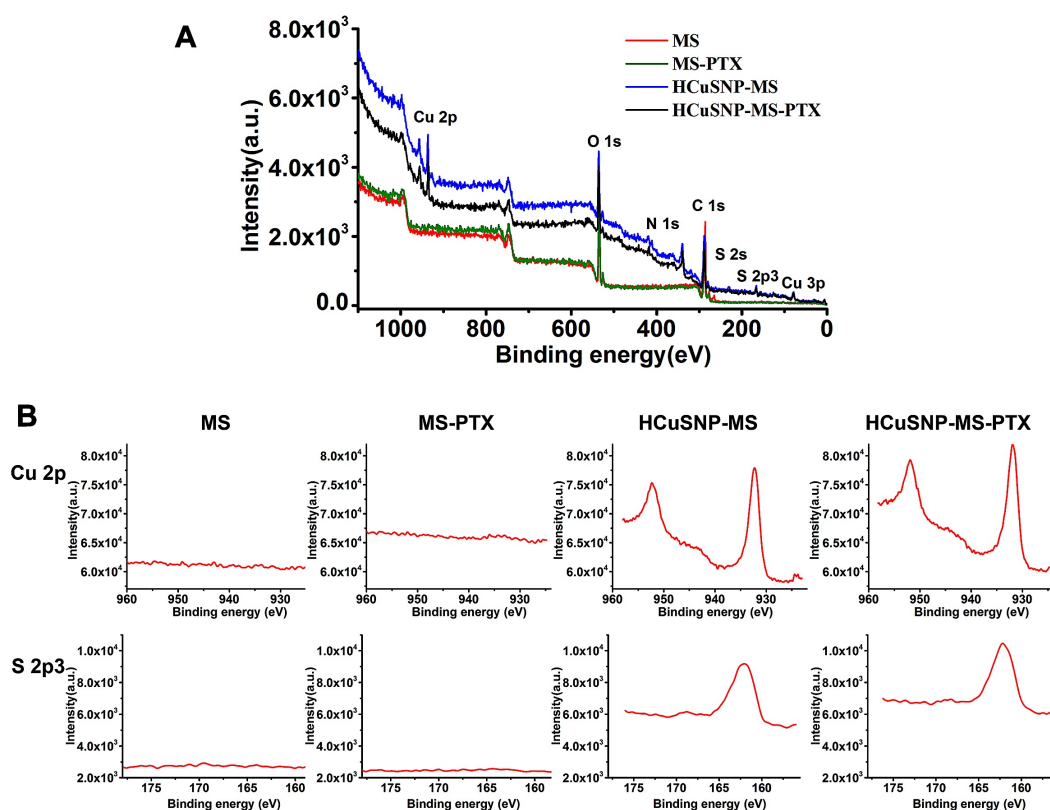
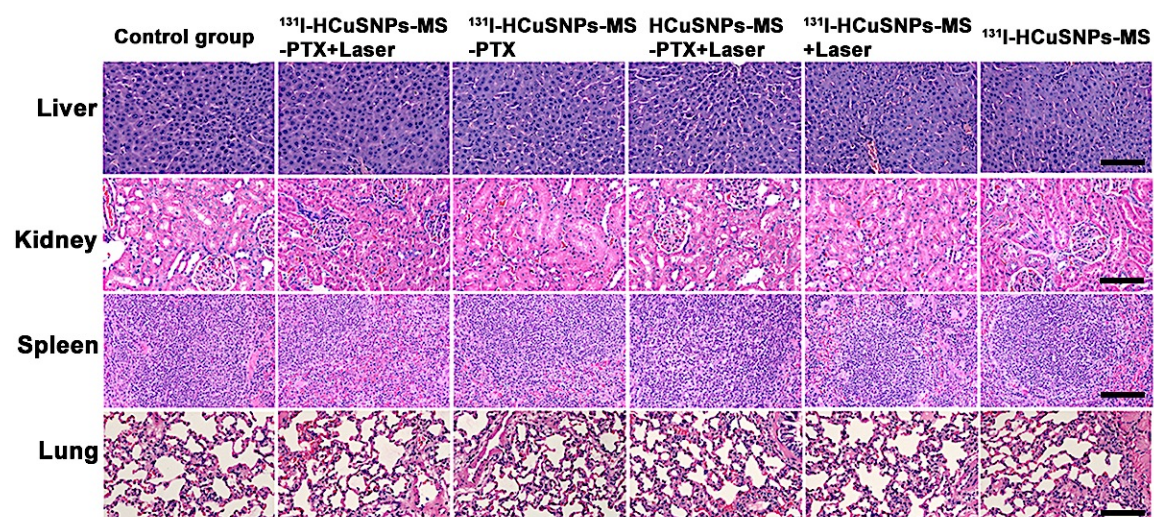


## Supplementary Material



**Figure S1, A**, Full range XPS spectra of survey in microspheres powders. **B**, XPS lineshapes of Cu 2p and S 2p3 of microspheres powders. The two peaks located at 932.2 eV and 952.2 eV are assigned to Cu 2p<sub>3/2</sub> and Cu 2p<sub>1/2</sub> in HCUSNPs, respectively. The peak at 162 eV corresponds to S 2p in HCUSNPs.



**Figure S2**, The H&E staining of major organs (liver, kidney, spleen and lung) in different treatment groups at day 7. Bar, 50  $\mu$ m.