

Supplementary Materials

Dual-Energy CT Imaging of Tumor Liposome Delivery After Gold Nanoparticle-Augmented Radiation Therapy

Jeffrey R. Ashton^{1,2}, Katherine D. Castle³, Yi Qi¹, David G. Kirsch^{3,4}, Jennifer L. West², Cristian T. Badea^{1,2*}

¹ Center for In Vivo Microscopy, Department of Radiology, Duke University Medical Center, Durham, NC 27710, United States

² Department of Biomedical Engineering, Duke University, Durham, NC, 27705, United States

³ Department of Pharmacology and Cancer Biology, Duke University, Durham, NC, 27705, United States

⁴ Department of Radiation Oncology, Duke University Medical Center, Durham, NC, 27710, United States

* Address correspondence to: cristian.badea@duke.edu

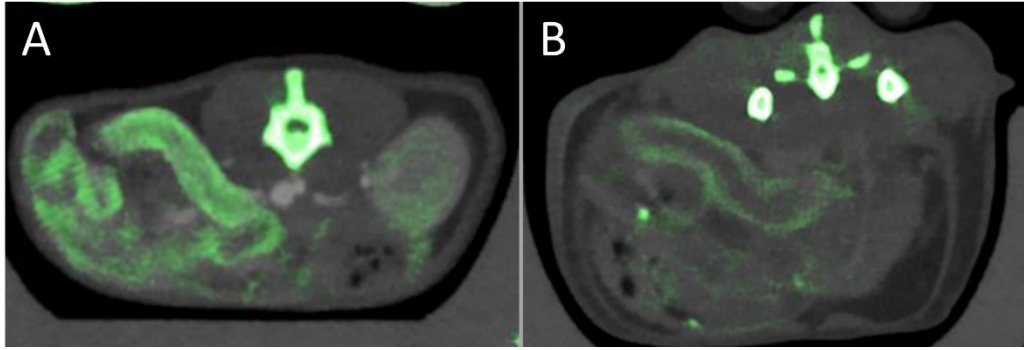


Figure S1: Axial sections of the mouse abdomen showing intestinal enhancement after RGD-AuNP injection and 5 Gy RT. Dual energy CT images are shown with the gold map superimposed on the 80 kVp grayscale image. (A) CT scan 2 days after gold injection. (B) CT scan 5 days after injection. Intestinal enhancement is shown at both time points, but decreases between 2 days and 5 days post-injection. The gold maps are windowed from 2 mg/mL to 20 mg/mL, while the 80 kVp images are windowed from -500 HU to 2000 HU.