

A heparan sulfate-based matrix therapy reduces brain damage and enhances functional recovery following stroke

Yacine Khelif¹, Jérôme Toutain¹, Marie-Sophie Quittet¹, Sandrine Chantepie², Xavier Laffray²,
Samuel Valable¹, Didier Divoux¹, Fernando Sineriz³, Emanuelle Pascolo-Rebouillat³, Dulce
Papy-Garcia², Denis Barritault^{2,3}, Omar Touzani^{1*}, Myriam Bernaudin^{1*}

¹ Normandie Univ, UNICAEN, CNRS, CEA, ISTCT/CERVOxy group, GIP CYCERON,
14000 Caen, France

² CRRET (EA 4397/ERL CNRS 9215), Université Paris-Est, Université Paris Est Créteil, F-
94010, Créteil, France.

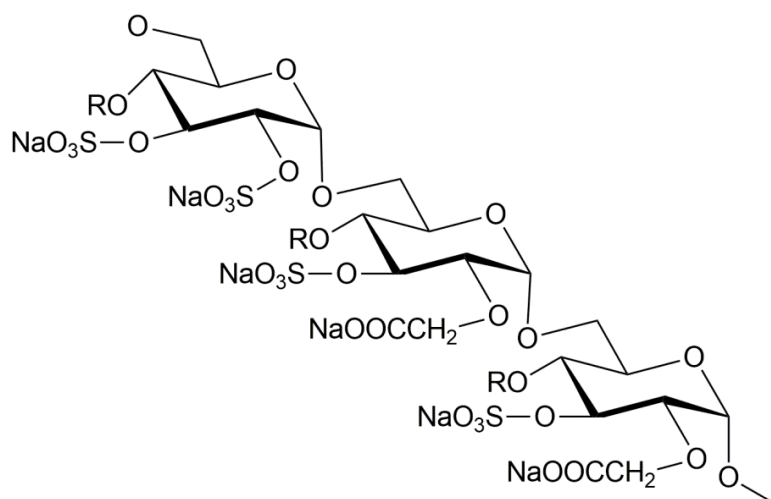
³ Société OTR3, 4 rue Française, 75001 PARIS, France.

* Authors contributed equally to the work

Corresponding author: bernaudin@cyceron.fr

Table S1: Primers sequences used for RT-qPCR.

Gene Full Name	NM accession number	Primers sequences
Cyclophilin-A	Nm_6014064	F=5' TACATGGTCGGGGTGTGTTGA 3'
	Nm_6014065	R=5' CTAAGGCCAACCGTGAAAAG 3'
VEGF-A	Nm_459576	F=5' CGTCTACCAGCGCAGCTATTG 3'
	Nm_459677	R=5' GCACTCCAGGGCTTCATCATT 3'
Ang-2	Nm_459669	F=5' GCTGAACTGGGAAGGCA 3'
	Nm_459668	R=5' CTGGTTGGCTGATGCTACTGATT 3'



HSm4131

R =	Groups substitution	Index
- H	-	0.85
- CO-CH ₃	Acetyl	0.20
- CH ₂ -COONa	Carboxymethyl	0.56
- SO ₃ Na	Sulphate	1.39

Figure S1: Structure and chemical composition of HSm4131.

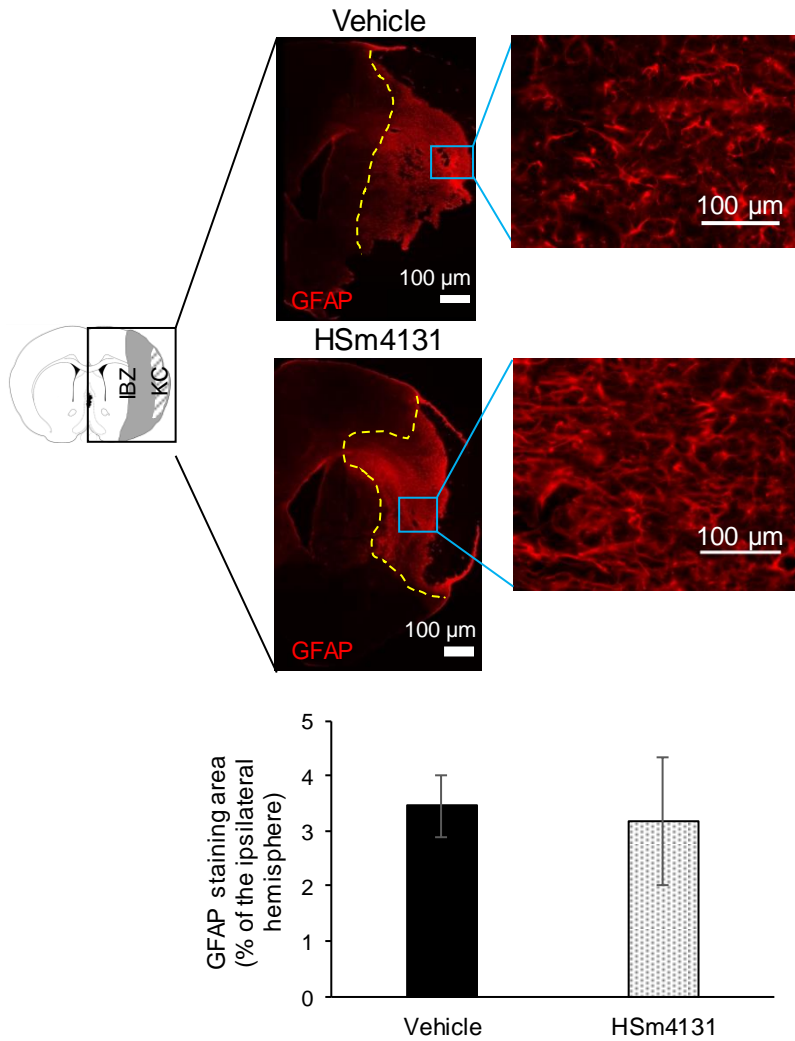


Figure S2: Immunohistochemistry study of the glial reaction. Representative images of GFAP-labeled cells and the percentage of the ratio of GFAP staining to the ipsilateral hemisphere on day 35 post-MCAo (mean \pm SD) (vehicle n = 4; 0.5 mg/kg HSm4131 n = 5). KC: Kystic cavity; IBZ: Infarct boundary zone.

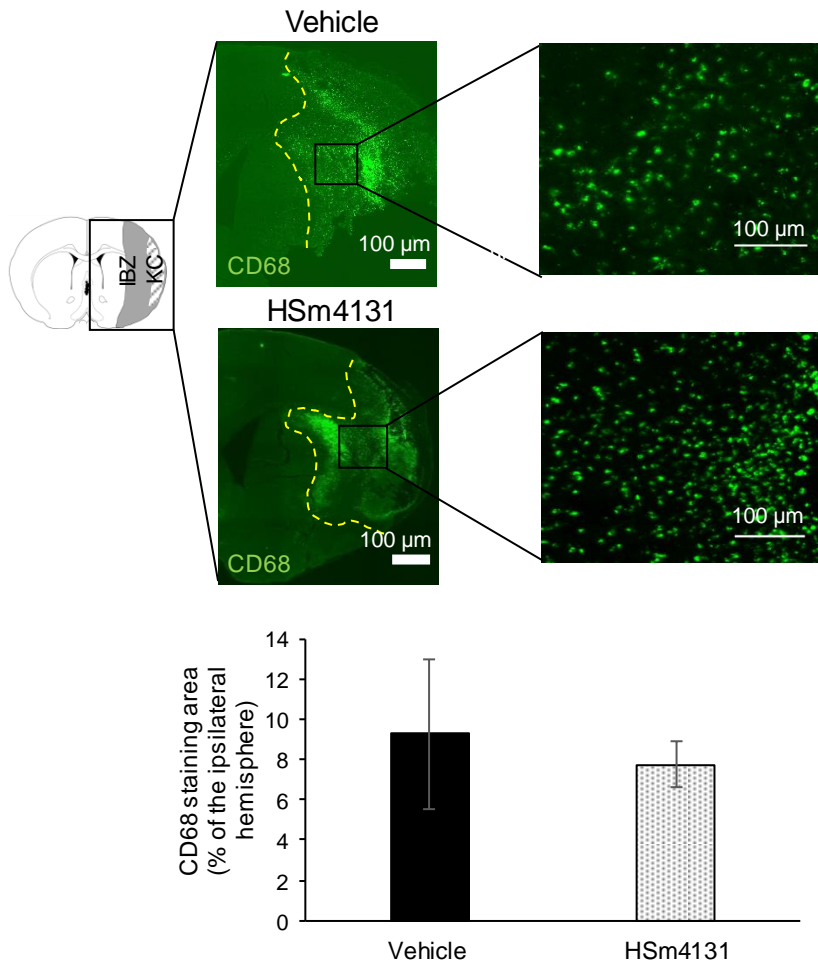


Figure S3: Immunohistochemistry study of the inflammatory reaction. Representative images of CD68-labeled cells and the percentage of the ratio of CD68 staining to the ipsilateral hemisphere on day 35 post-MCAo (mean \pm SD) (vehicle n = 4; 0.5 mg/kg HSm4131 n = 5). KC: Cystic cavity; IBZ: Infarct boundary zone.