

Erratum

In-Tether Chiral Center Induced Helical Peptide Modulators Target p53-MDM2/MDMX and Inhibit Tumor Growth in Stem-Like Cancer Cell: Erratum

Kuan Hu^{1*}, Feng Yin^{1*}, Mengyin Yu¹, Chengjie Sun¹, Jingxu Li¹, Yujie Liang¹, Wenjun Li¹, Mingsheng Xie¹, Yuanzhi Lao³, Wei Liang²✉ and Zi-gang Li¹✉

1. School of Chemical Biology and Biotechnology, Peking University Shenzhen Graduate School, Shenzhen, 518055, China
2. Department of Radiation Oncology, the First Affiliated Hospital, Anhui Medical University, Hefei, 230022, China
3. School of Pharmacy, Shanghai University of Traditional Chinese Medicine, Shanghai, 201203, China

* These authors contributed equally to this work.

✉ Corresponding authors: Zi-gang Li, email: lizg@pkusz.edu.cn Wei Liang, email: williamleung@163.com

© Ivyspring International Publisher. This is an open access article distributed under the terms of the Creative Commons Attribution (CC BY-NC) license (<https://creativecommons.org/licenses/by-nc/4.0/>). See <http://ivyspring.com/terms> for full terms and conditions.

Published: 2018.11.10

Corrected article: *Theranostics* 2017; 7(18): 4566-4576. doi: 10.7150/thno.19840.

In our paper [1], Figure 3 should be corrected as follows.

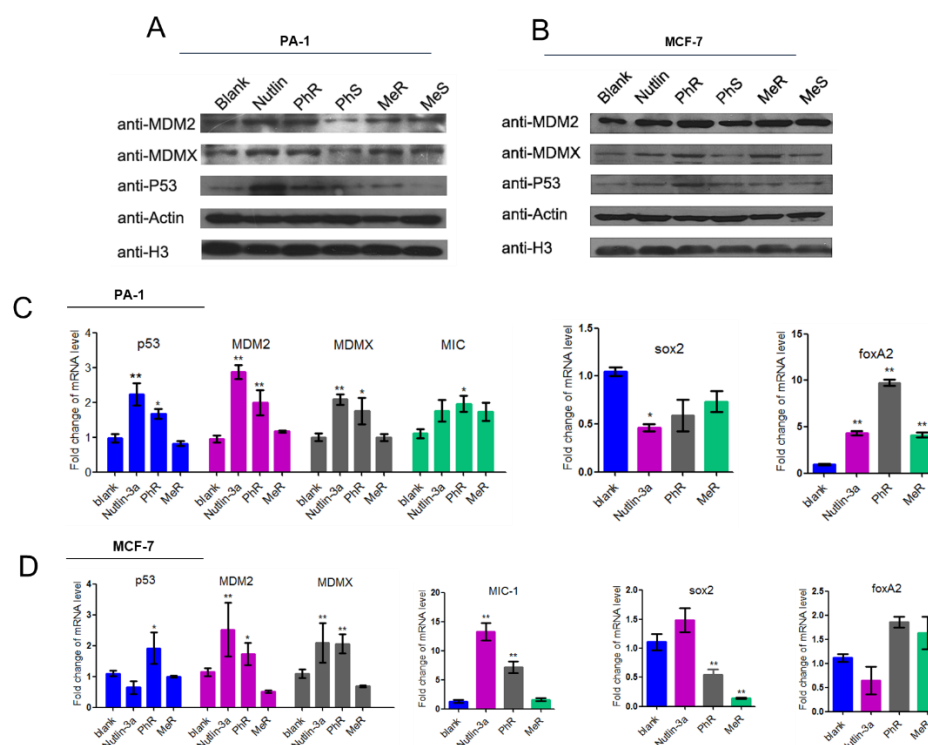


Figure 3. (A, B) MeR/PhR stabilize p53 and elevate protein levels of p53 and its targets MDM2 and MDMX. Log-phase PA-1 and MCF-7 cells were incubated with 40 μ M peptides (MeR/S, PhR/S) or 1 μ M nutlin-3a, and cell lysates were analyzed by Western blotting. (C, D) PhR shows induction of p53 and p53 target genes in p53wt cell lines. Exponentially growing p53wt cancer cell lines were incubated with 40 μ M peptides or 1 μ M nutlin-3a for 48 h, and mRNA level of p53 and p53 targets MDM2, MDMX, and MIC or stemness-related genes were analyzed by quantitative PCR and expressed as fold increase. Error bars represent SEMs for triplicates of three independent experiments, **, $P < 0.01$. *, $P < 0.05$.

References

- [1] Hu K, Yin F, Yu M, Sun C, Li J, Liang Y, Li W, Xie M, Lao Y, Liang W, Li Zg. In-Tether Chiral Center Induced Helical Peptide Modulators Target p53-MDM2/MDMX and Inhibit Tumor Growth in Stem-Like Cancer Cell. *Theranostics* 2017; 7(18):4566-4576. doi:10.7150/thno.19840.