

Supplement Figures and Legends

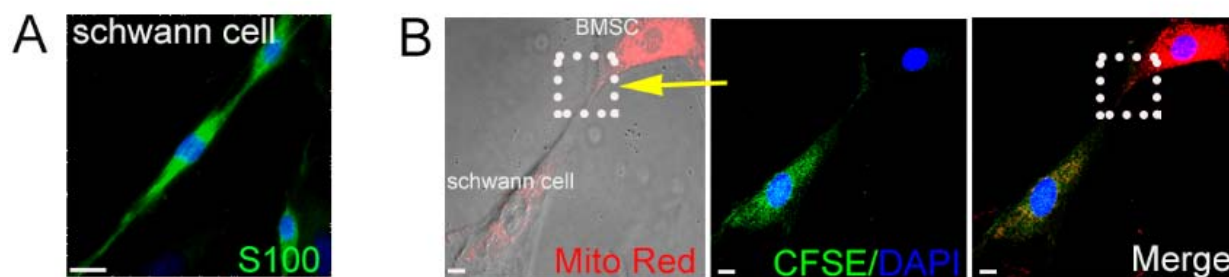


Figure S1. Transfer of mitochondria from BMSCs to Schwann cell in a direct co-culture condition. (A) Schwann cells were stained with Schwann cell marker S100. Scale bars: 10 μ m. (B) Schwann cells (OGD, 8 h) were co-cultured with BMSCs. Mitochondria were transferred through tunneling nanotubes to Schwann cells.

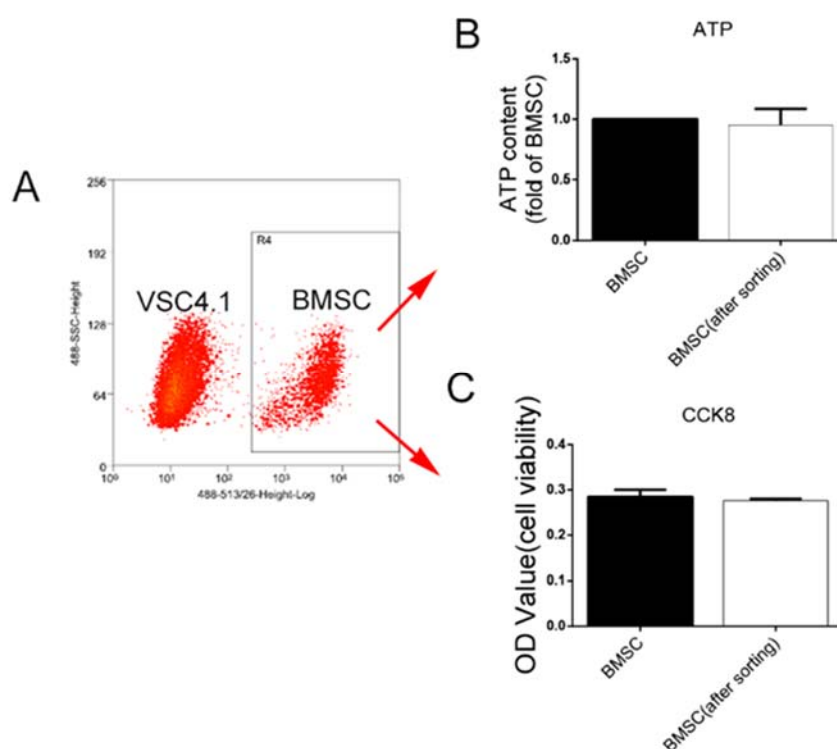


Figure S2. ATP content and cell viability were measured after direct co-culture and FACS sorting. (A) BMSCs were sorted after co-culture with VSC4.1 motor neurons(OGD, 8 h) by FACS. Cells on the right district were CFSE-labeled BMSCs. (B) ATP contents between normal BMSCs and BMSC group (co-culture and FACS sorting) were no difference. (C) CCK-8 assay showed no difference in cells. $n=4$, $P>0.05$.

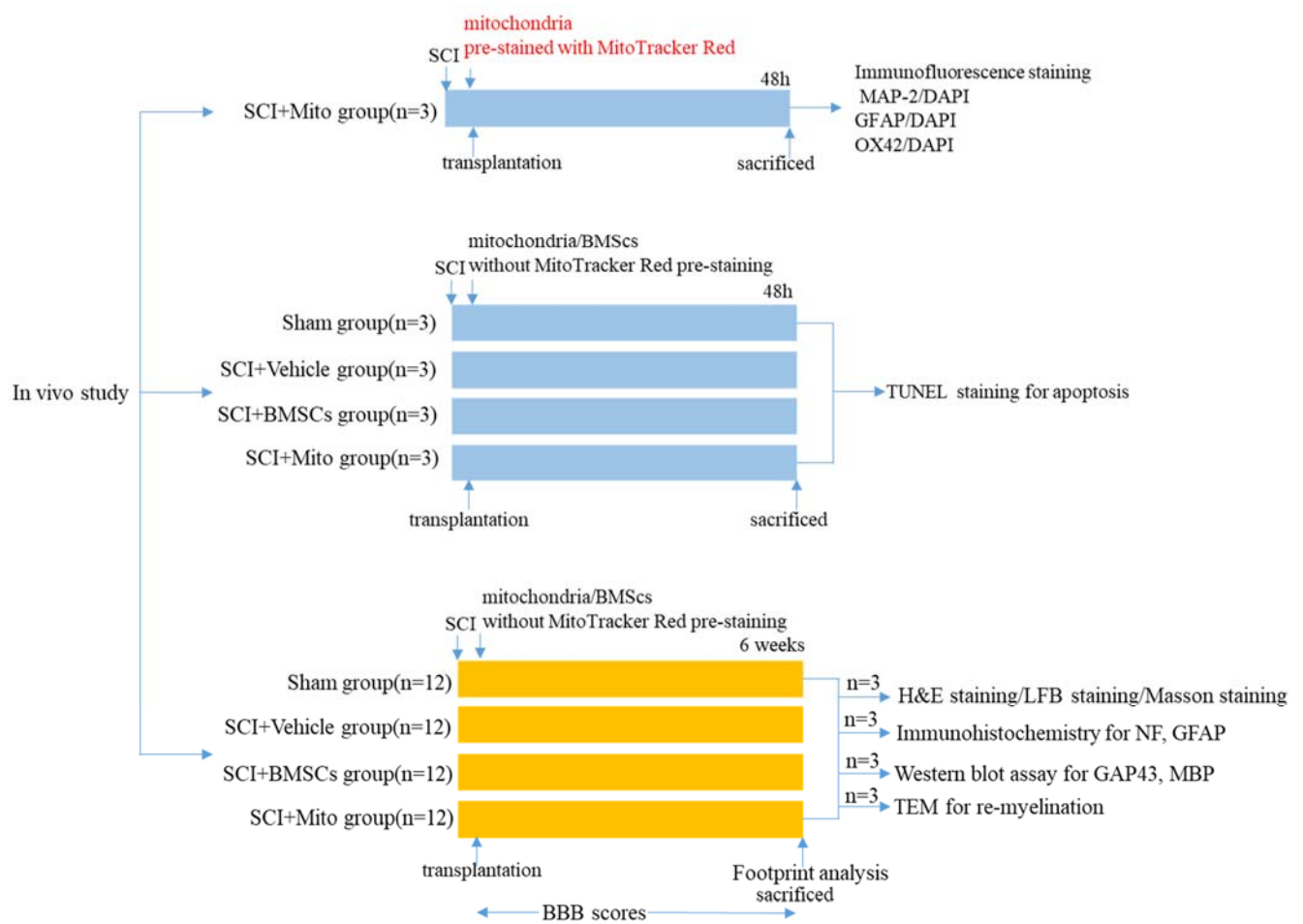


Figure S3 Schematic diagram for *in vivo* experiments.