

Figure S1. Validation of the stability of plasma mRNA. Plasma mRNA levels of SDH5

were stable after being subjected to various conditions.

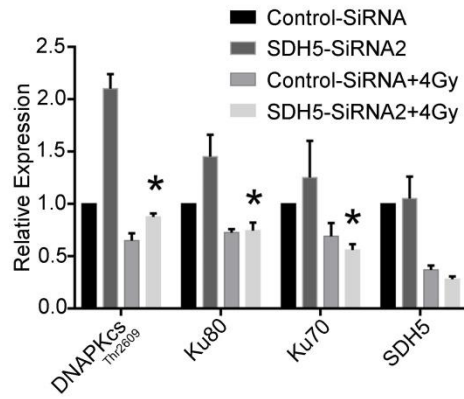


Figure S2. Quantitative detection of indicated proteins in A549 after 4 Gy radiation. Histograms of quantification expression of indicated proteins based on the mean of three independent experiments; Actin was used as the endogenous control. Error bar shows the standard error.

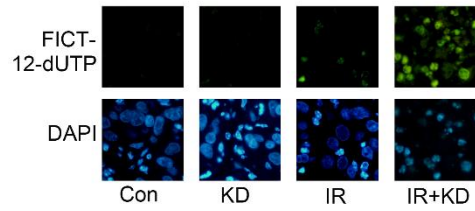


Figure S3. Apoptosis of SDH5-deficient tumors after radiation. Effects of SDH5 deficiency on radiation-induced apoptosis in tumor tissues were investigated by the TUNEL assay. Apoptotic cells were stained with FITC-12-dUTP (green). Cell nucleus were stained with DAPI (blue).