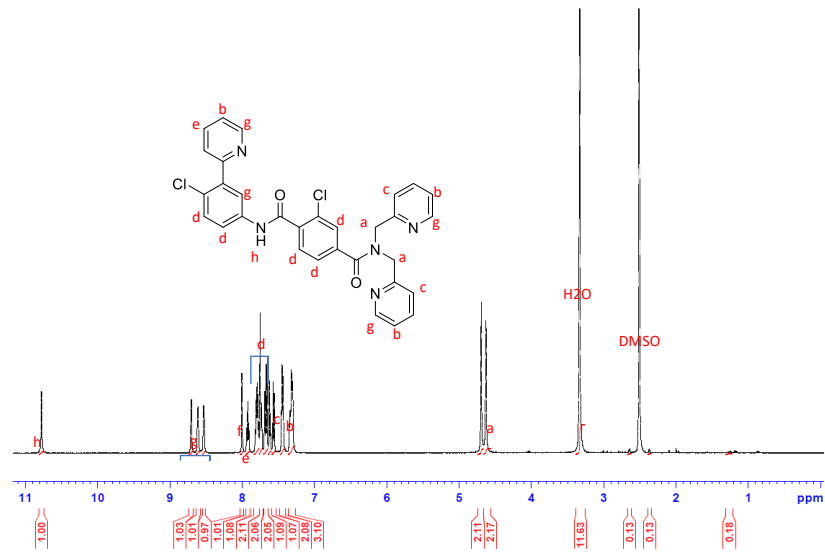
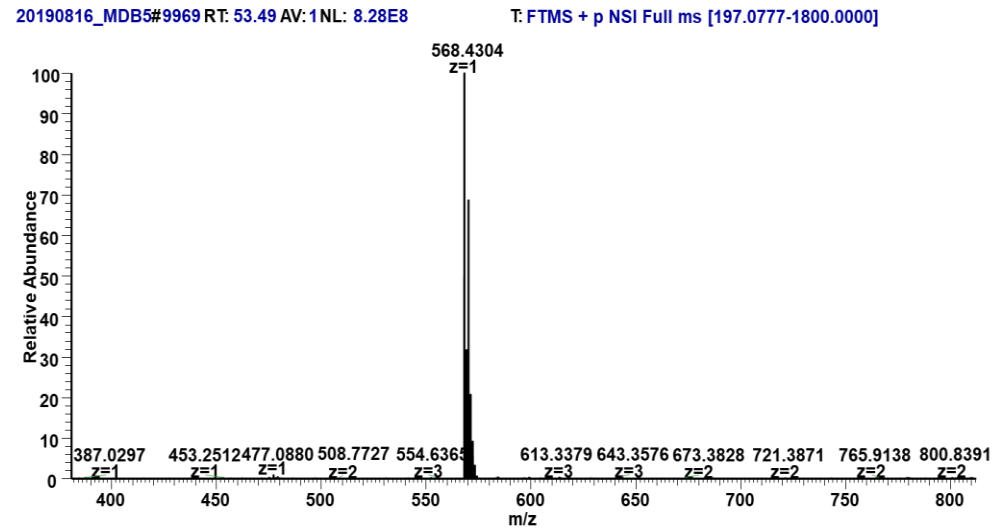


Supplementary Figure S1

A



B



C

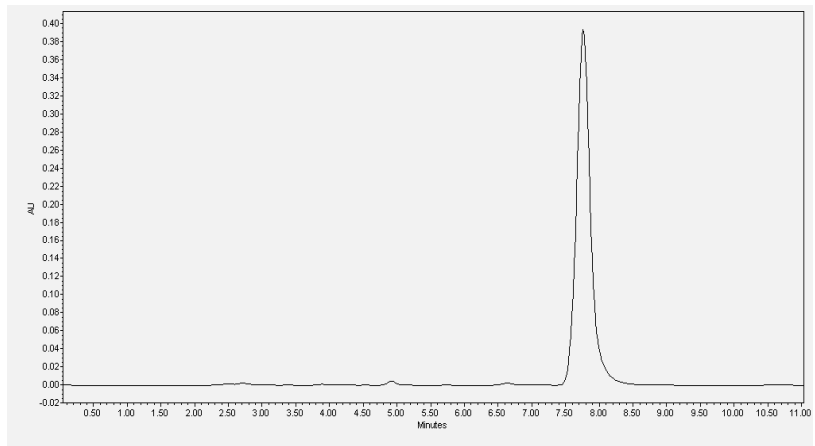


Figure S1. Characterization of MDB5 molecule. (A) Proton NMR, (B) Mass spectrum of MDB5. (C) HPLC Chromatogram.

Supplementary Figure S2

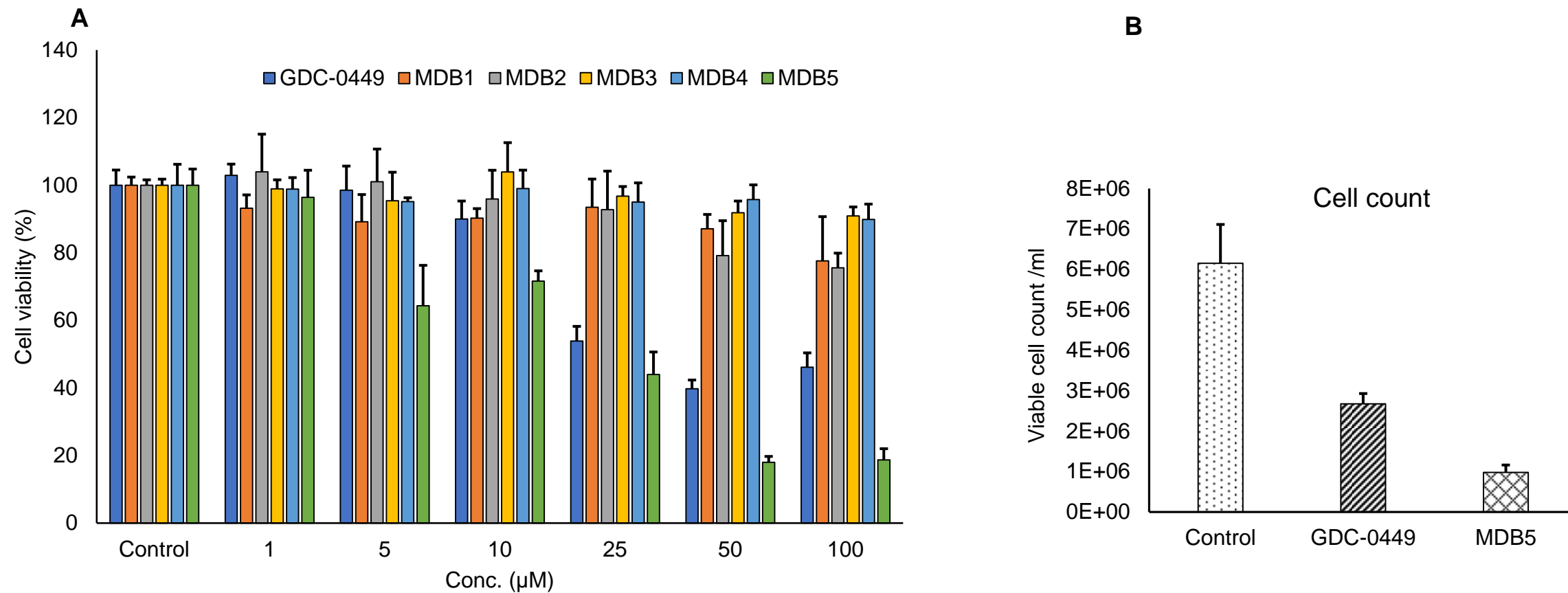


Figure S2. (A) Cell viability with different GDC-0449 analogs. **(B)** viable cell count after GDC-0449 and MDB5 treatment.

Supplementary Figure S3

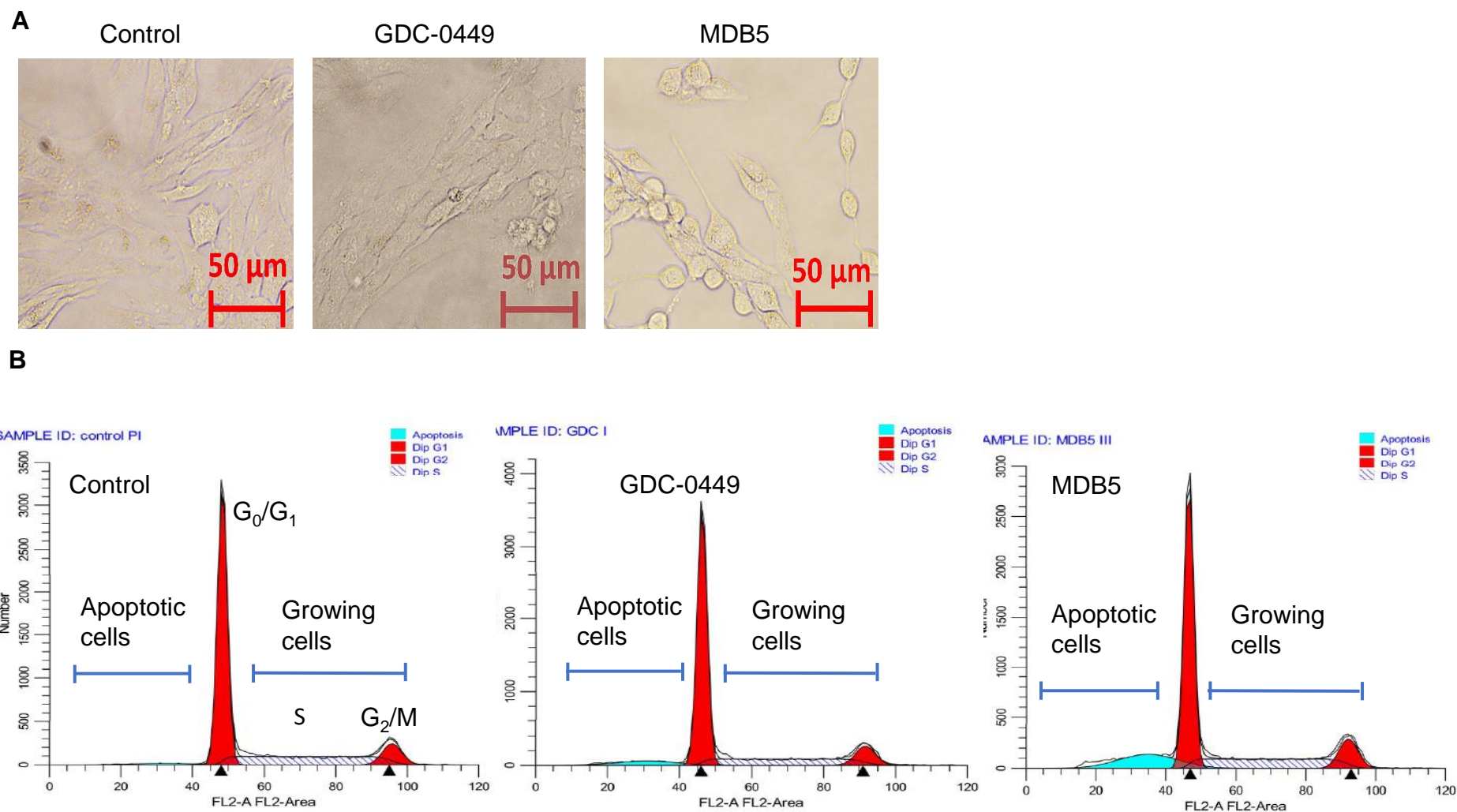


Figure S3. (A) Cell cycle analysis and **(B)** cell morphology after GDC-0449 and MDB5 treatment.

Supplementary Figure S4

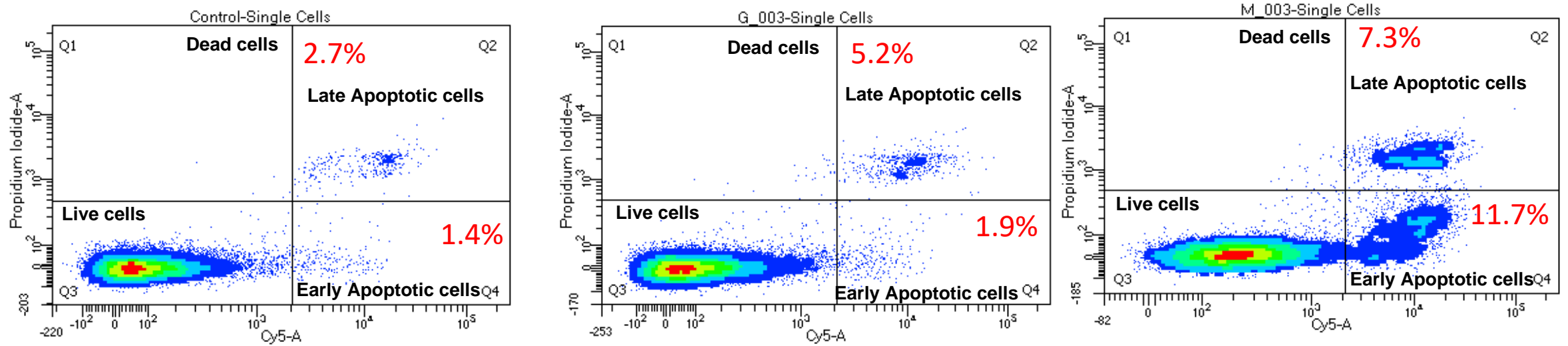


Figure S4. % of apoptosis after GDC-0449 and MDB5 treatment.

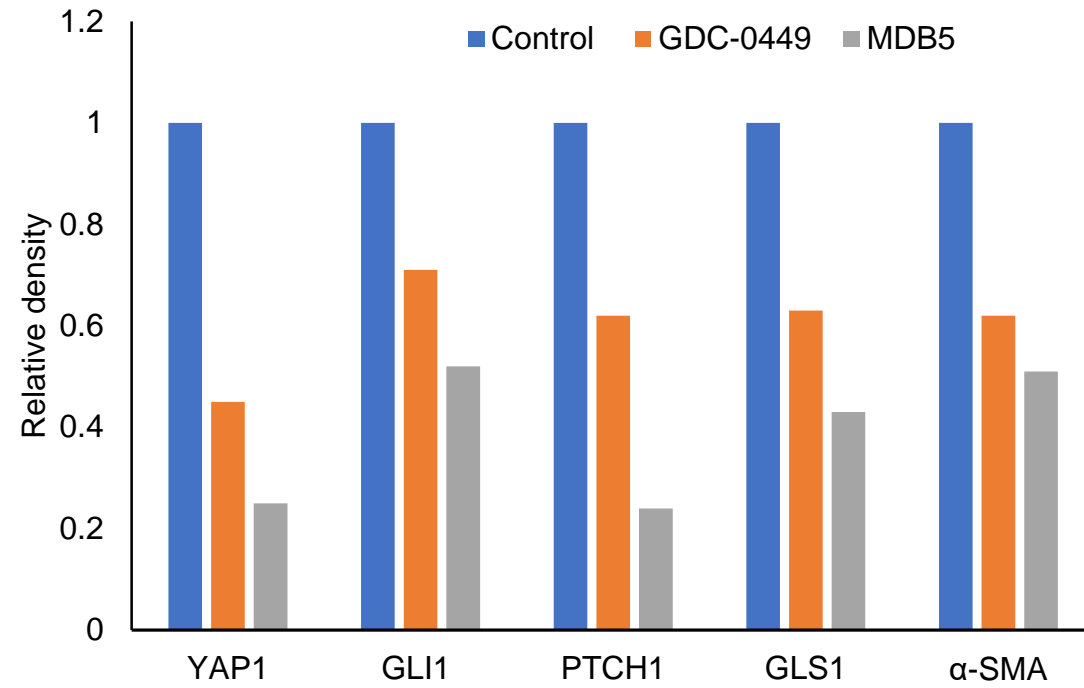


Figure S5. Quantification (relative density) of the intensity of staining of YAP1, GLI1, PTCH1, GLS1, and α -SMA protein detected by Western blot.