

Supplementary Materials

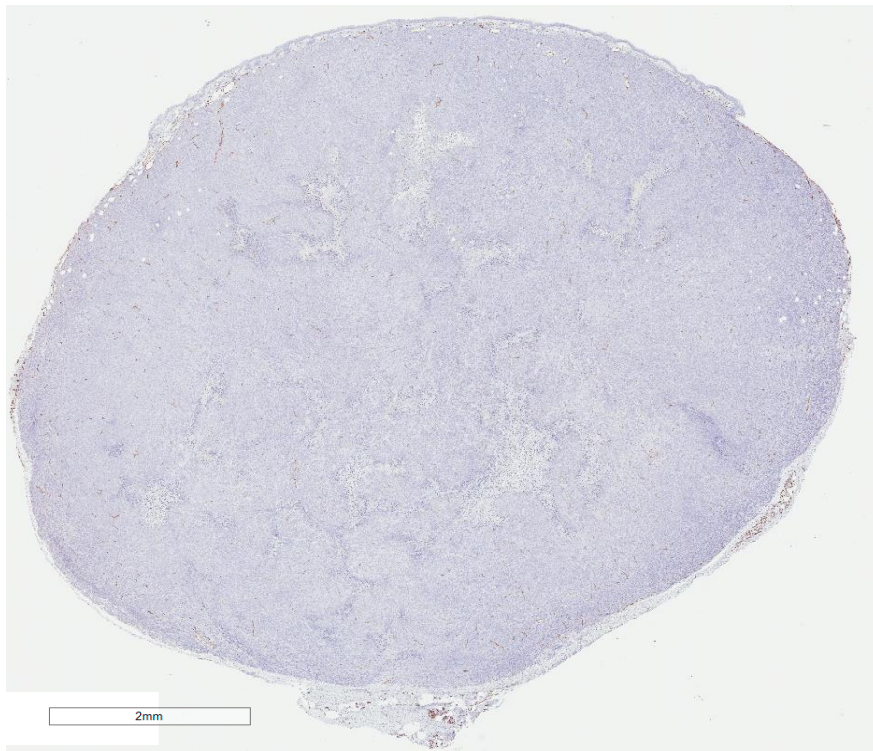
High-resolution 3D visualization of nanomedicine distribution in tumours

Jennifer I. Moss *et al.*

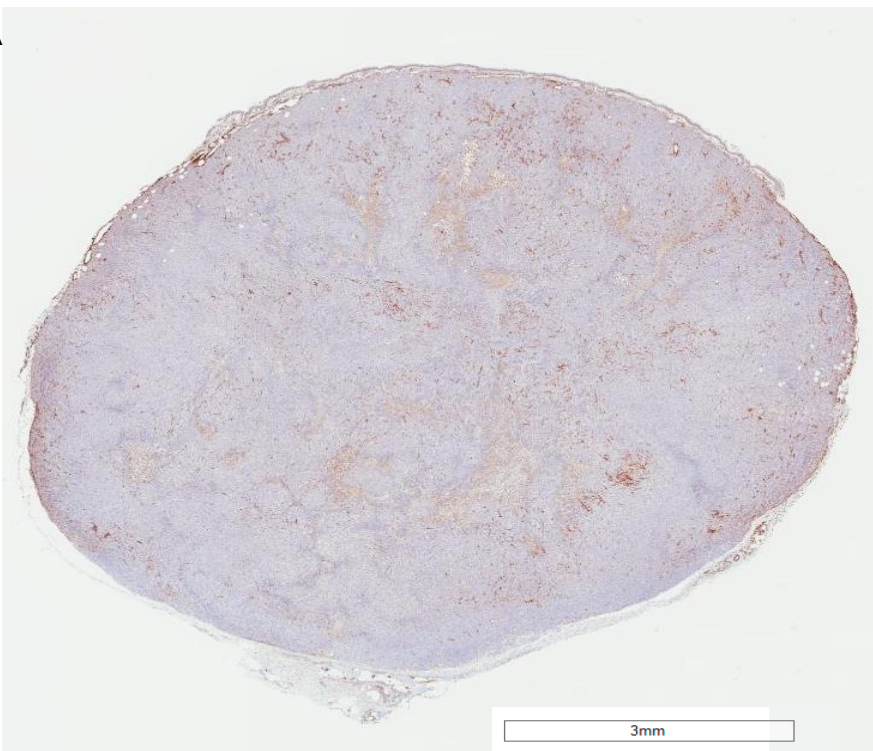
Figure S1. Representative whole tumor sections showing IHC staining for CD31 (top) and α SMA (bottom).

Suppl. Fig. 1A: Representative CD31 (top) and α SMA (bottom) IHC staining on whole tumor section of Calu-6 tumor.

CD31

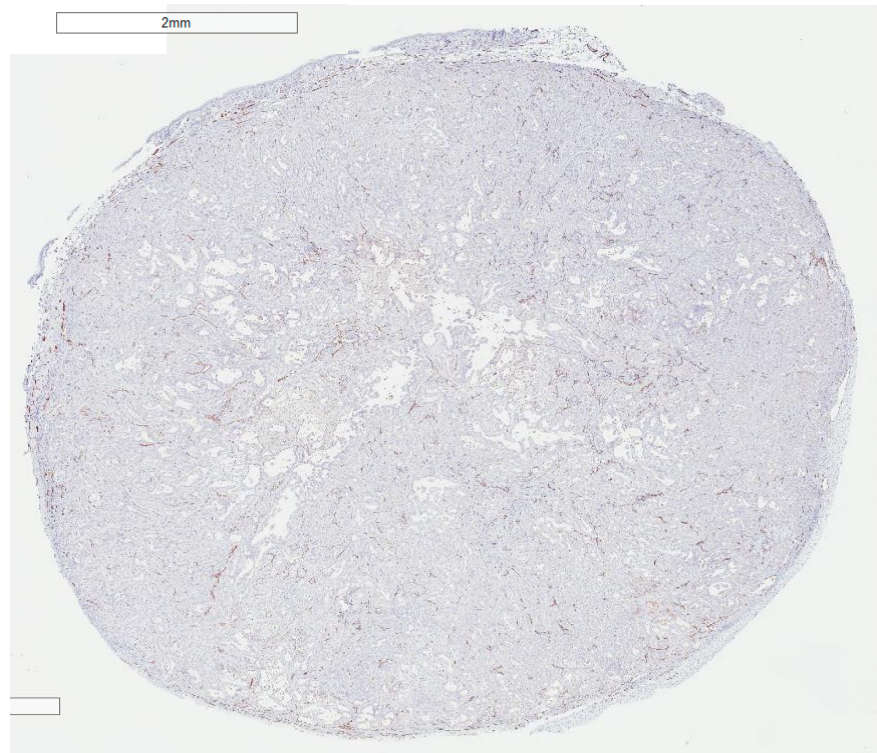


α SMA

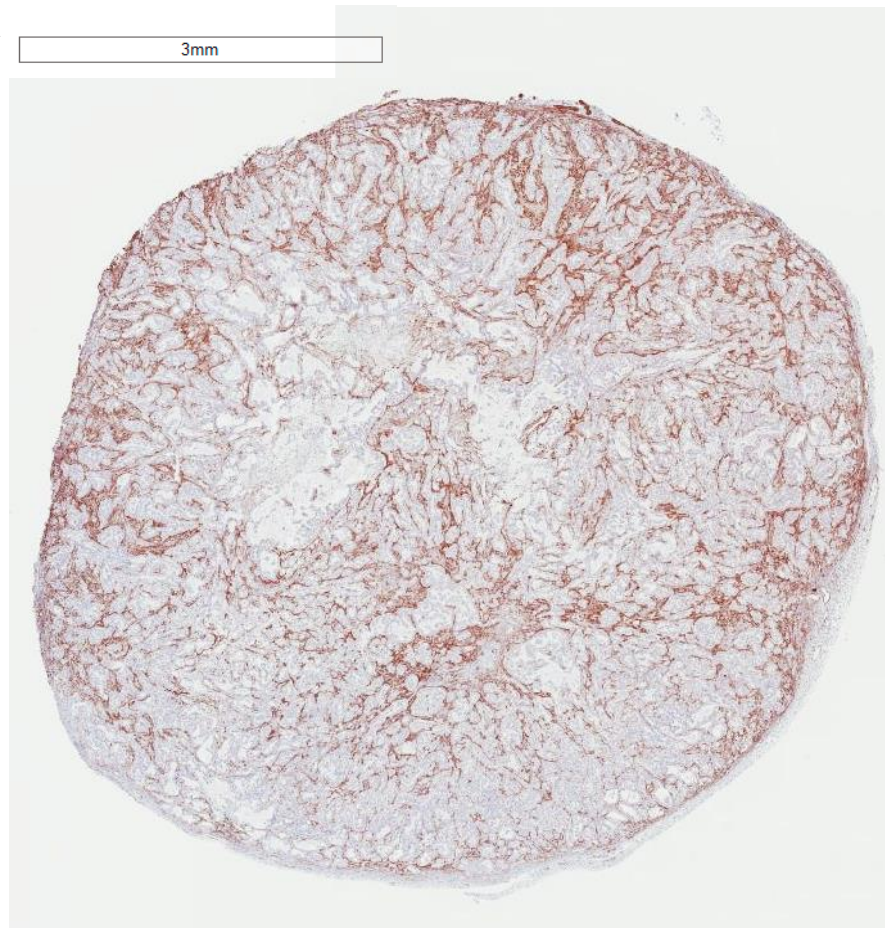


Suppl. Fig. 1B: Representative CD31 (top) and α SMA (bottom) IHC staining on whole tumor section of Calu-3 tumor.

CD31

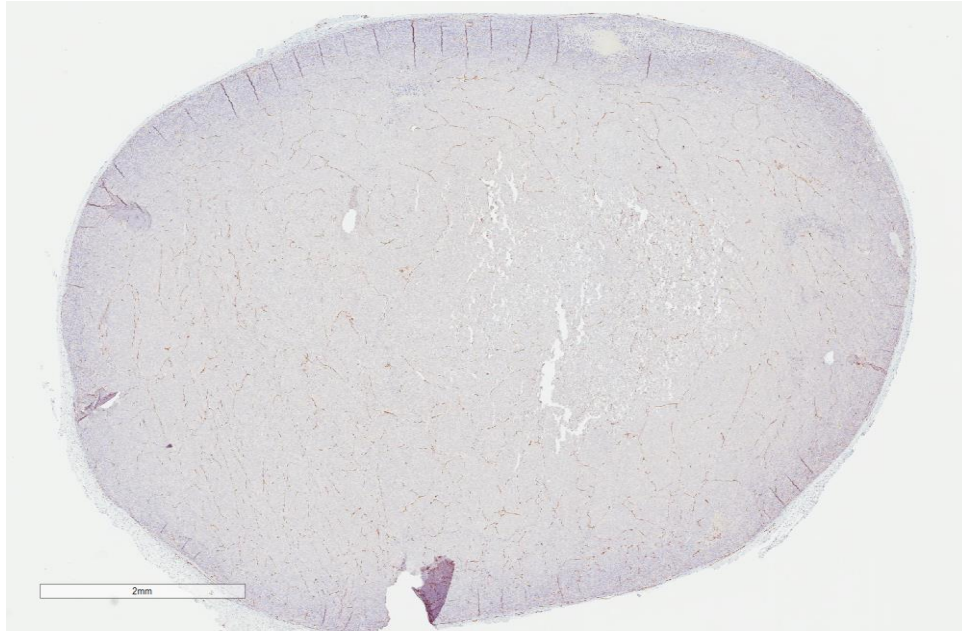


α SMA

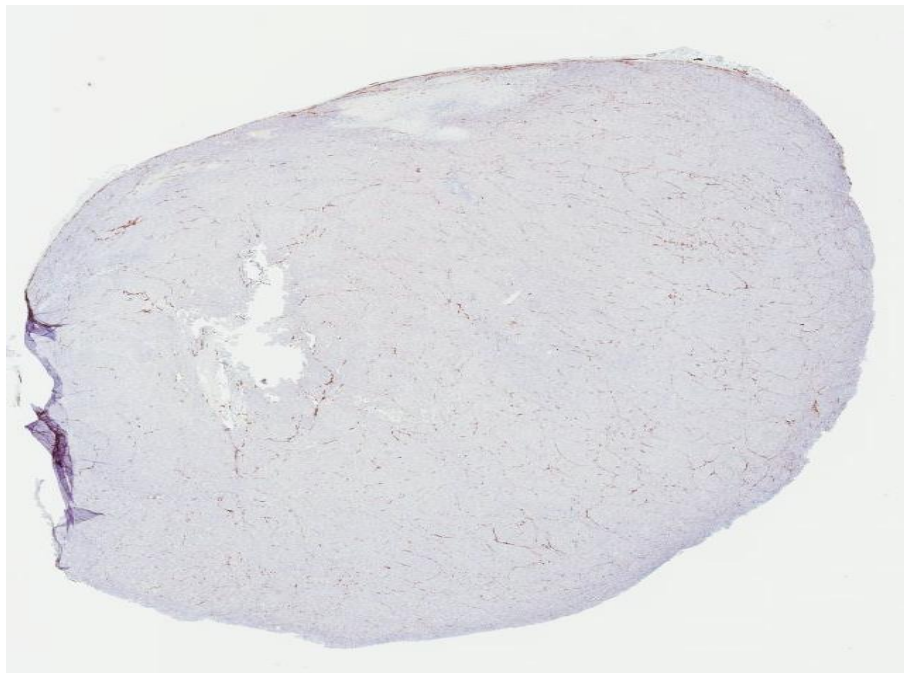


Suppl. Fig. 1C: Representative CD31 (top) and α SMA (bottom) IHC staining on whole tumor section of E35CR tumor.

CD31

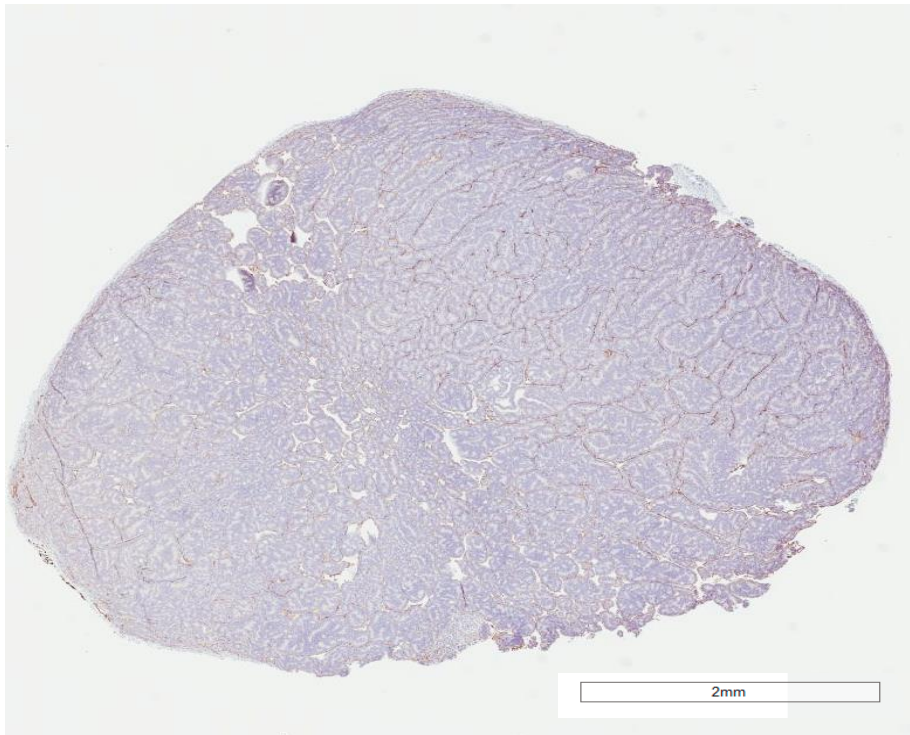


α SMA



Suppl. Fig. 1D: Representative CD31 (top) and α SMA (bottom) IHC staining on whole tumor section of E77 tumor.

CD31



α SMA

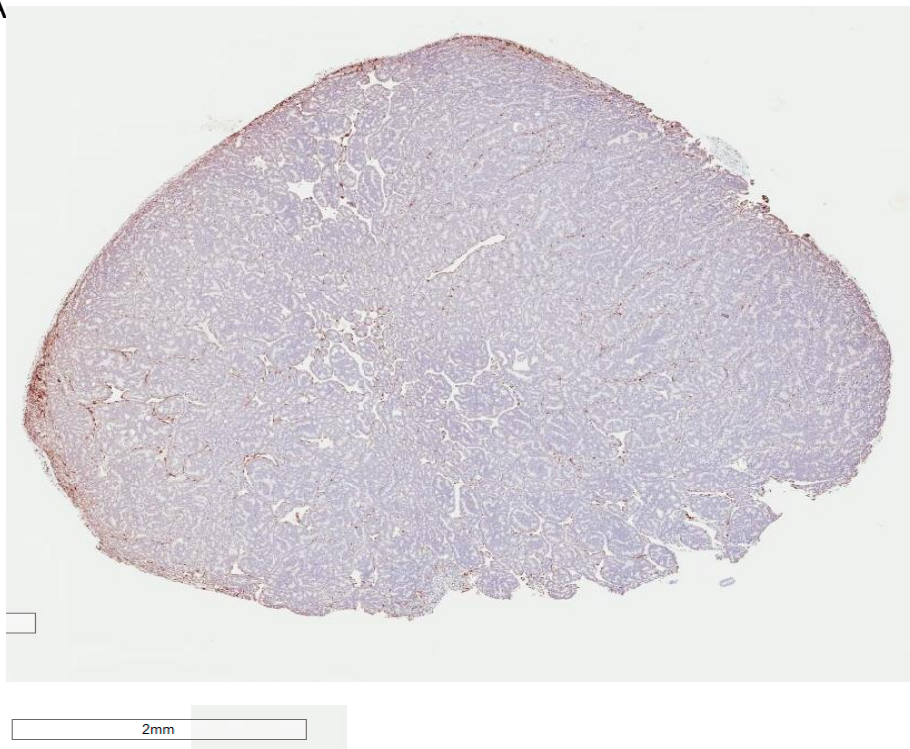
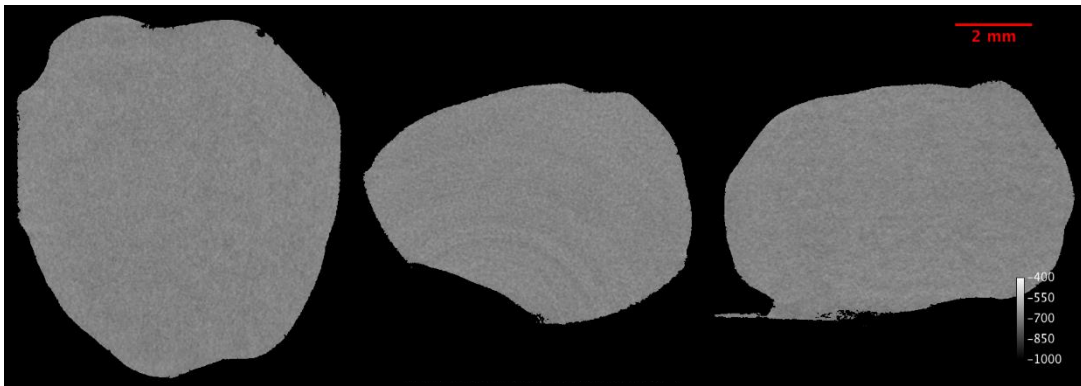


Figure S2. Lack of μ CT enhancement in tumor at 30 minutes post-IV (A) and post-ITu (B) administration of free iohexol.

Suppl. Fig. 2A: Calu-6 tumor at 30 mins post-ITu dose of free iohexol.



Suppl. Fig. 2B: Calu-6 tumor at 30 mins post-IV dose of free iohexol.

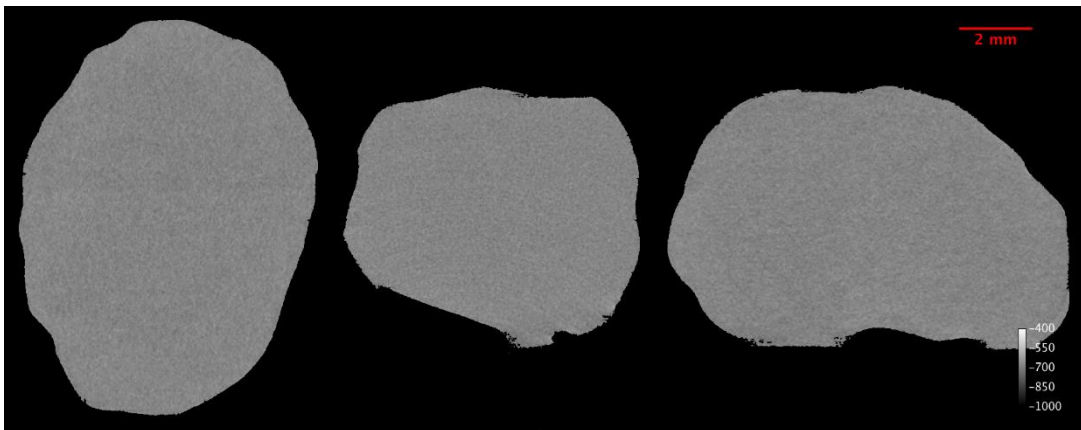
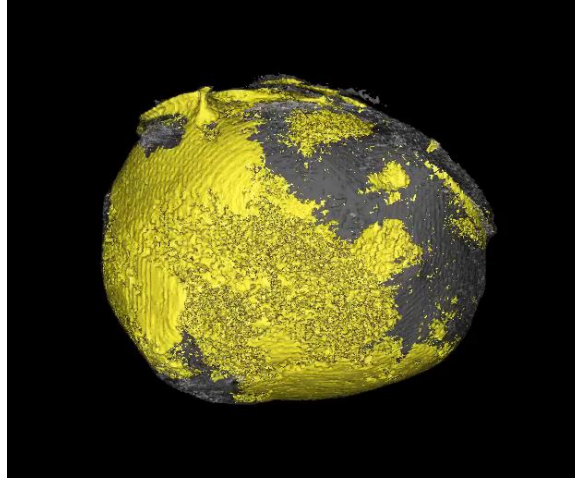


Figure S3. Rotating 3D visualization of liposomes in H358 tumor post-ITu dosing.



**3D Visualisation
Rotating Tumour.mp4**