

1 **Supplementary data :**

2 **1. Supplementary figures and tables:**

3 **Fig. S1-S2.** Kaplan-Meier curves of overall survival in patients with different
4 molecular types of breast cancer in the training cohort (Fig. S1A-D) and
5 validation cohort (Fig. S2A-D).

6

7 **Fig. S3.** Subgroup analysis of adjuvant chemotherapy (ACT) benefit for DFS of
8 low- and high-risk patients in the METABRIC database.

9

10 **Fig. S4.** The immune risk score values from the pCR and nonpCR groups in
11 the test cohort. Violin plot showing immune score values between the pCR and
12 nonpCR groups in the test cohort. pCR, pathologic complete response.

13

14 **Fig. S5.** Evaluation of expression of immune checkpoint genes (LAG3,
15 IL12A, IL12B, IL6, IFNG, IDO1, GZMB, CD47) between low- and high-risk
16 groups in the cohort from TCGA.

17

18

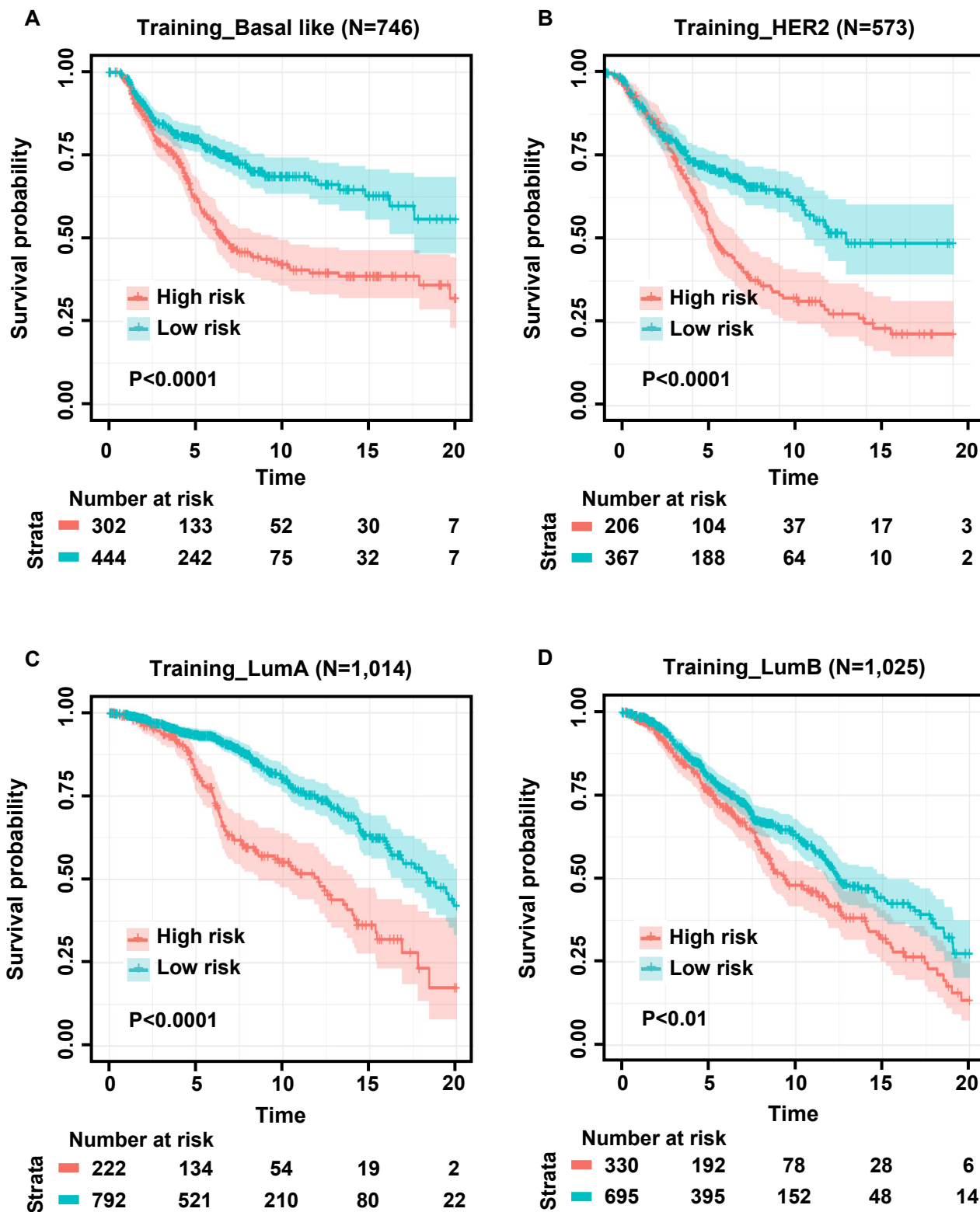
19

20

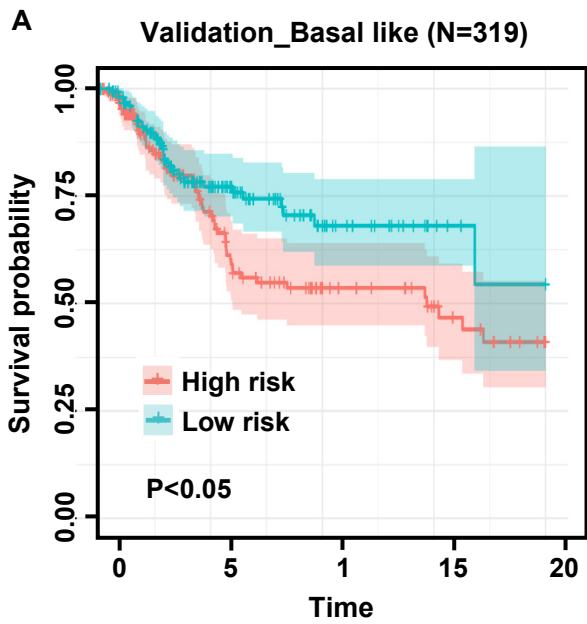
21

22

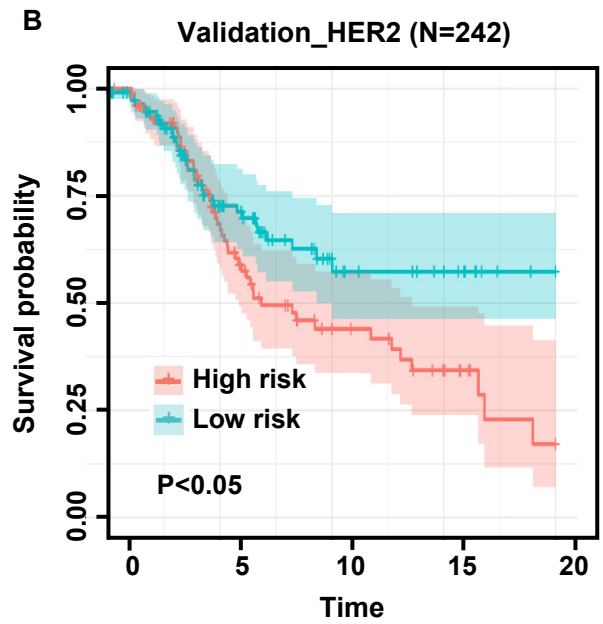
23 Fig.S1



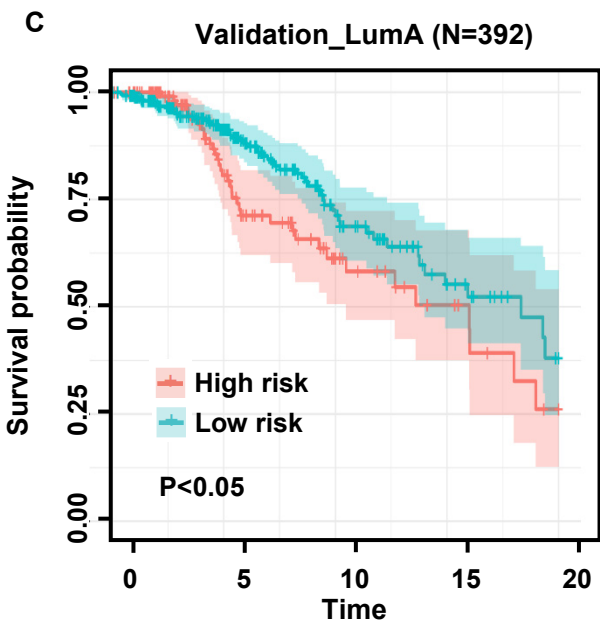
24 Fig.S2



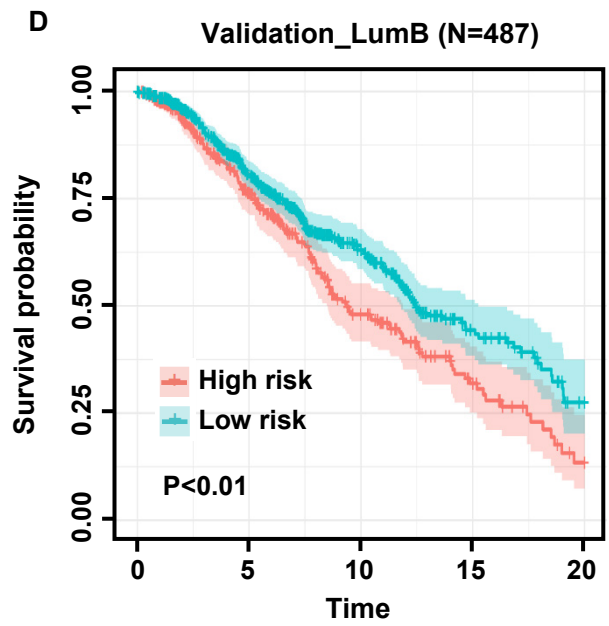
		Number at risk				
Strata		0	5	10	15	20
High risk	160	72	33	21	8	
Low risk	159	69	26	8	4	



		Number at risk				
Strata		0	5	10	15	20
High risk	10	51	21	11	3	
Low risk	11	56	21	11	2	



		Number at risk				
Strata		0	5	10	15	20
High risk	129	65	24	11	3	
Low risk	263	160	59	23	7	



		Number at risk				
Strata		0	5	10	15	20
High risk	198	86	31	14	4	
Low risk	289	148	58	24	11	

25
Fig.S3

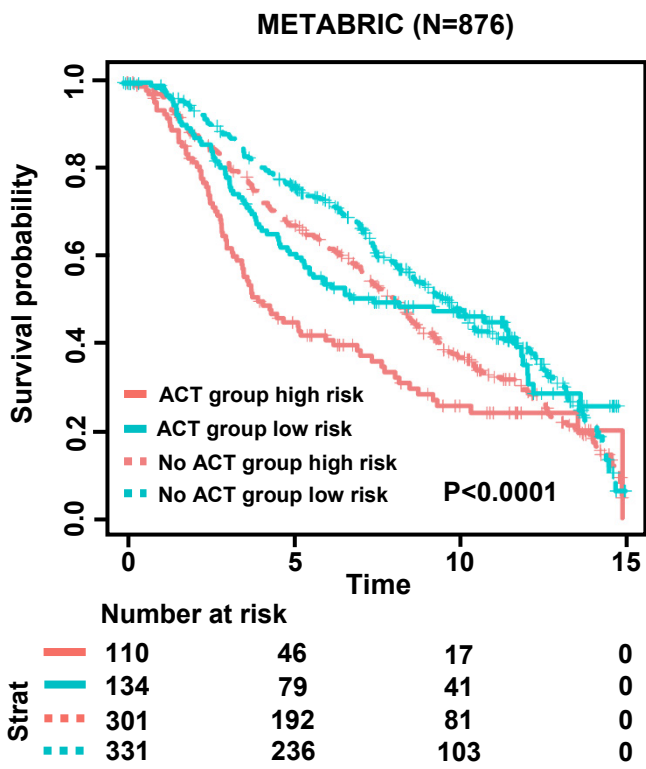
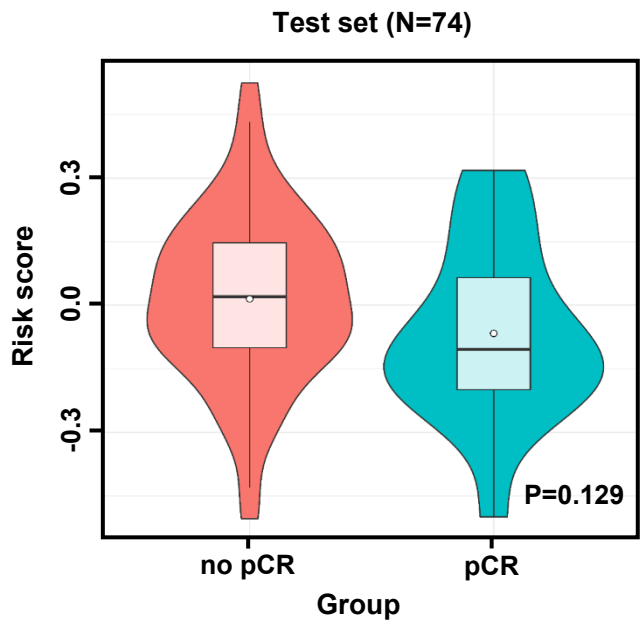
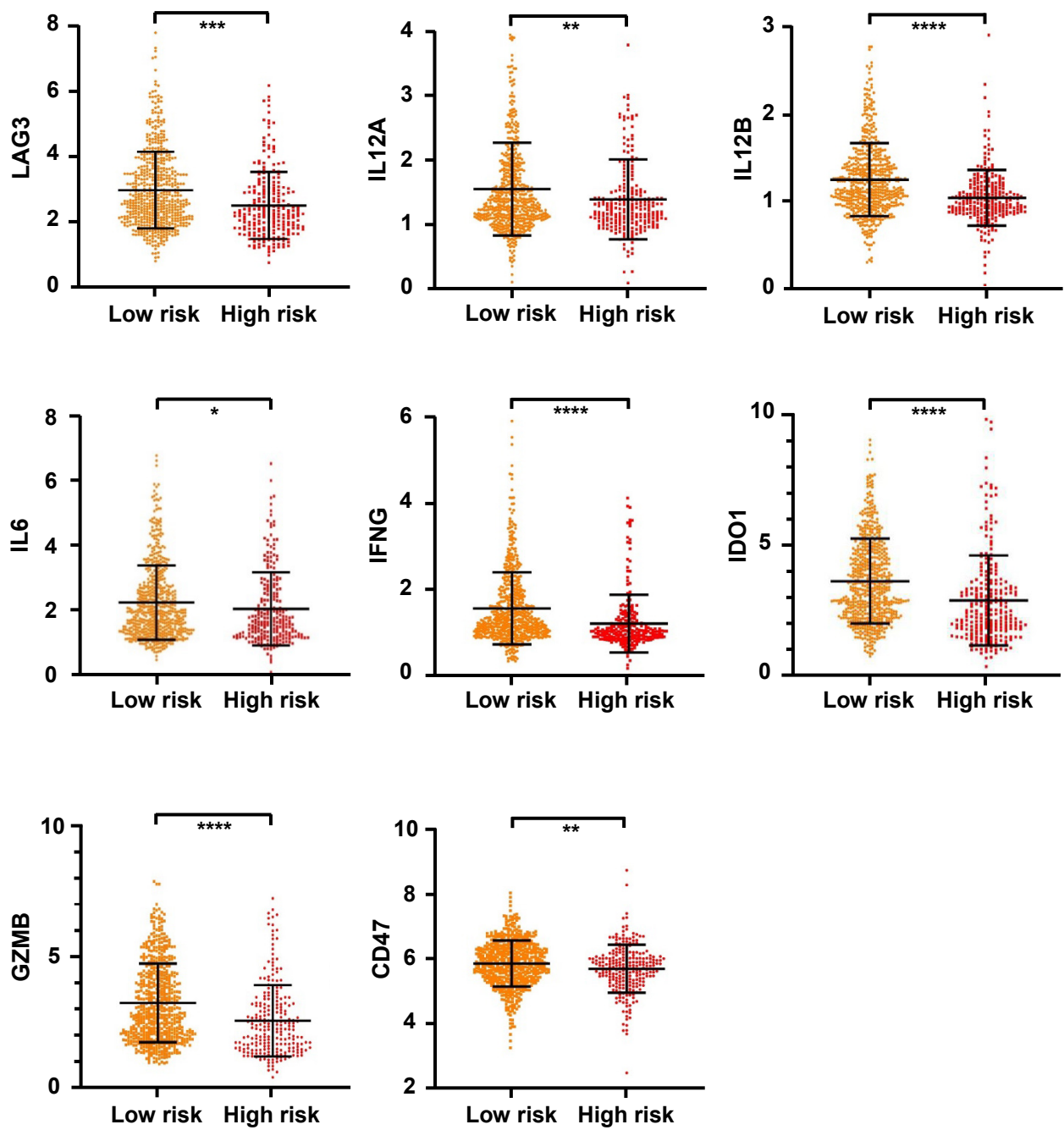


Fig.S4



26 Fig.S5



27 **Table S1. Summary of included studies (Excel).**

28 **Table S2. Baseline patient characteristics**

Characteristics	Number of patients (%)		
	Training set (N=3526)	Validation set (N=1512)	Test set (N=74)
Age (years)			
≤ 60	1788 (50.7%)	762 (50.4%)	68 (91.9%)
> 60	1033 (29.3%)	446 (29.5%)	6 (8.1%)
Tumor grade			
Low grade	881 (25.0%)	374 (24.7%)	23 (31.1%)
High grade	1125 (31.9%)	480 (31.7%)	43 (58.1%)
PAM50 subtype			
Basal like	746 (21.1%)	319 (21.1%)	25 (33.8%)
HER2	573 (16.3%)	242 (16.0%)	35 (47.3%)
Luminal like	2038 (57.8%)	879 (58.1%)	8 (10.8%)
Normal like	169 (4.8%)	69 (4.6%)	6 (8.1%)
Stage			
Early	1583 (44.9%)	679 (44.9%)	7 (9.5%)
Advanced	479 (13.6%)	207 (13.7%)	67 (90.5%)

29 **Table S3. Coefficients of immune markers for predicting breast cancer**
 30 **prognosis.**

Immune cell marker	Coefficients	SE	P-Value
T cells CD4 memory resting	-1.761	0.490	0.0003
T cells regulatory (Tregs)	2.526	0.629	<0.0001
T cells gamma delta	-2.334	0.662	0.0004
NK cells activated	3.408	0.764	<0.0001
Monocytes	2.645	0.908	0.004
Macrophages M0	1.591	0.274	<0.0001

31