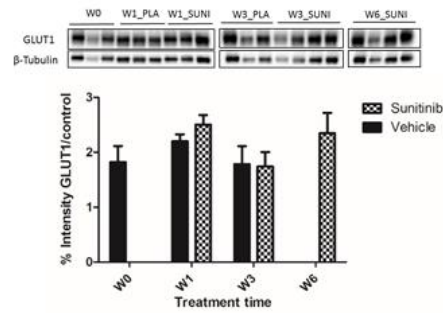


1 **Supplementary Figures:**

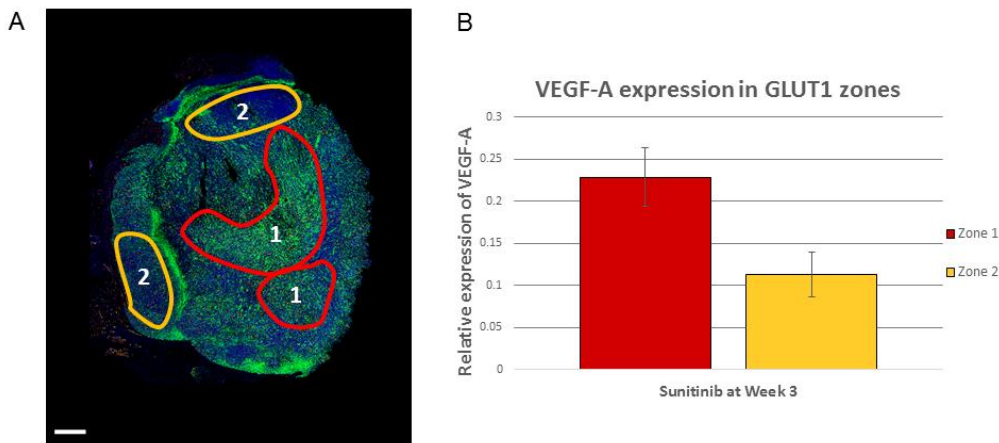


2

3 **Supplementary Figure 1.** Western blots show no difference in GLUT1 expression in SUN1
4 (gray columns) and VEH-treated mice (black columns). Data are duplicate assays of n= 3-4
5 animals, expressed as mean \pm SEM of the GLUT1 band density normalized by the band density
6 of β -tubulin.

7

8



9

10

11 **Supplementary Figure 2. Expression of VEGF-A in the GLUT1 regions at week 3 of**
12 **sunitinib treatment.** (A) A representative GLUT1-stained section showing the selection of
13 tumor regions with high GLUT1 expression (zone 1, circled in red) and low GLUT1 expression
14 (zone 2, circled in yellow). (B) Relative expression of VEGF-A in the GLUT1-stained zones 1
15 and 2. Data are expressed as mean \pm SEM (n=5).

16

17