

Figure S1

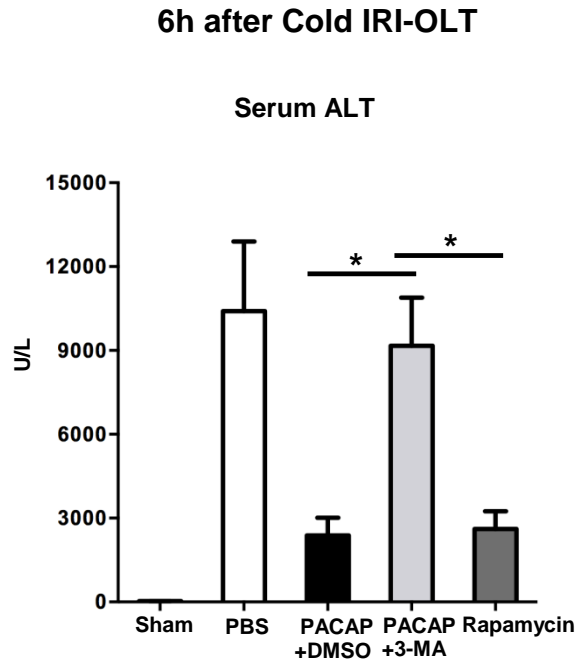


Figure S1 In syngeneic orthotopic liver transplantation subjected to extended cold storage (in 4° C UW solution for 20h), there were four experimental groups of recipients treated with PBS, PACAP+DMSO PACAP+3-MA or Rapamycin at liver harvest and immediately prior to reperfusion through portal vein injection. Serum ALT levels were analyzed at 6h post-transplant (*p<0.001, n=4-6/group).

Figure S2

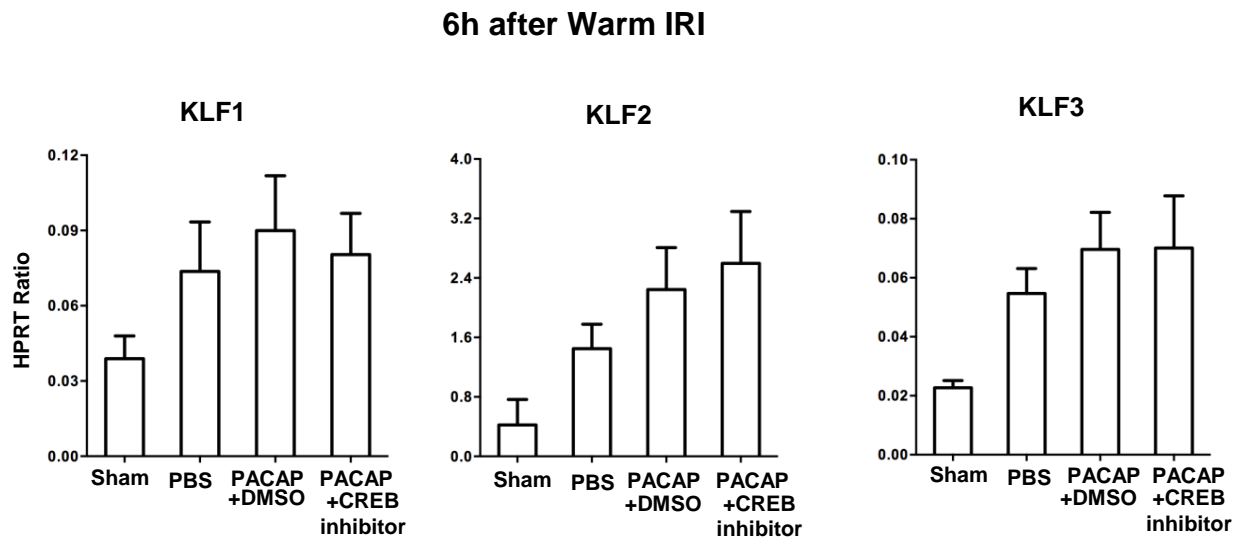


Figure S2 qPCR of KLF1, KLF2 and KLF3 in liver IRI (n=4-6/group).

Figure S3

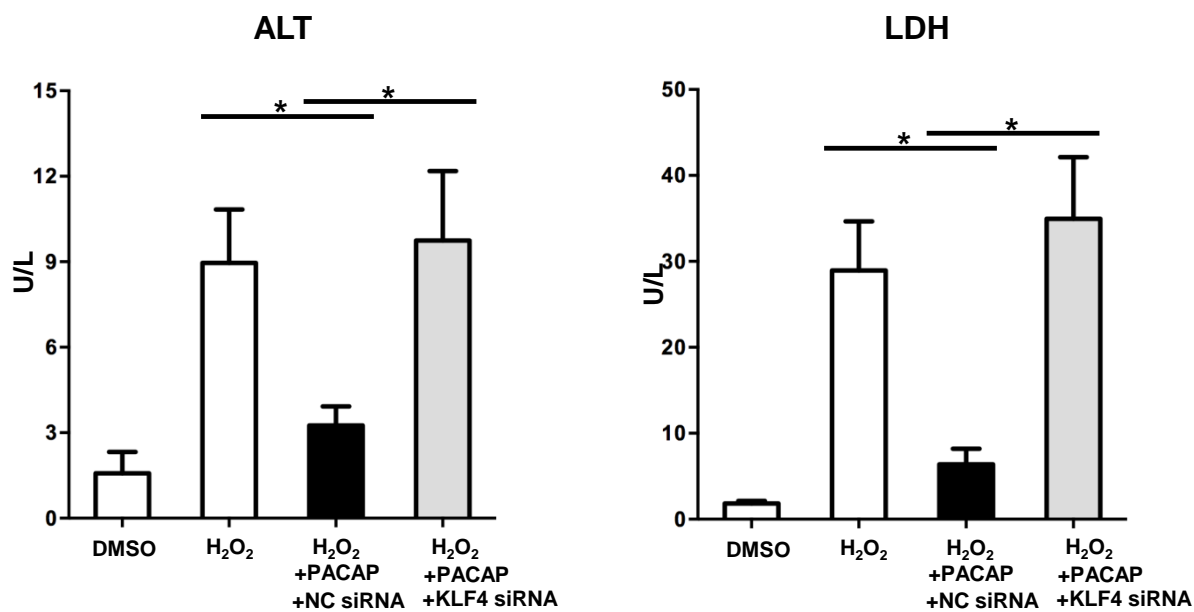


Figure S3 siRNA-mediated KLF4 silencing in vitro. Primary hepatocytes were pre-treated with PACAP+NC siRNA, or PACAP+KLF4 siRNA 1h prior to H₂O₂ stress. Supernatant ALT/LDH levels were assessed (*p<0.001, n=6/group).

Table S1

Primers used for qPCR

Genes	sense	antisense
LC3a	catgagcggagttggtcaaga	ccatgctgtgctgggtga
LC3b	ctgaccacgtgaacatgagc	acttcggagatgggagtg
Beclin-1	caggcgaaaccaggagag	cgagtttcaataaatggctcct
EGF	catgccccacaggattg	gggcaggaaacaagttcg
HGF	cacccttgggagattgtg	gggacatcagtctcattcacag
c-Met	ctgctctggaggacaagacc	gagttgatcacatgccaagc
KLF1	caagagctcgcacctcaag	gagcgaacctccagtcaca
KLF2	ctaaaggcgcacatctgcgta	tagtggcgggtaagctcgt
KLF3	gtccagcccgttcctttat	agggcttctcatatgattcaattac
KLF4	cgggaaggaggagaagacact	gagttcctcacgccaacg