

Supplementary Materials for
**Lentinan-functionalized selenium nanoparticles target tumor cell mitochondria
via TLR4/TRAF3/MFN1 pathway**

Hui-Juan Liu^{#,1,2*}, Yuan Qin^{1,2*}, Zi-Han Zhao^{1,2*}, Yang Zhang^{4*}, Jia-Huan Yang^{1,2},
Deng-Hui Zhai^{1,2}, Fang Cui^{1,2}, Ce Luo¹, Man-Xi Lu¹, Piao-Piao Liu¹, Heng-Wei Xu^{1,2},
Kun Li^{1,2}, Bo Sun², Shuang Chen², Hong-Gang Zhou^{#1}, Cheng Yang^{#,1,2}, Tao Sun^{#,1,2,3}

¹State Key Laboratory of Medicinal Chemical Biology and College of Pharmacy,
Nankai University, Tianjin, China

²Tianjin Key Laboratory of Early Druggability Evaluation of Innovative Drugs and
Tianjin Key Laboratory of Molecular Drug Research, Tianjin International Joint
Academy of Biomedicine, Tianjin, China

³Department of Gastroenterology and Hepatology, General Hospital, Tianjin Medical
University, Tianjin Institute of Digestive Disease, Tianjin, China.

⁴Department of Anesthesiology, Tianjin Fourth Central Hospital, Tianjin, China

*These authors have contributed equally to this work

[#]Correspondence to: Tao Sun, email: tao.sun@nankai.edu.cn

Cheng Yang, email: cheng.yang@nankai.edu.cn

Hong-gang Zhou, email: honggang.zhou@nankai.edu.cn

Hui-juan Liu, email: liuhuijuanxyz@163.com

This PDF file includes

Figs. S1-S3

Figure S1

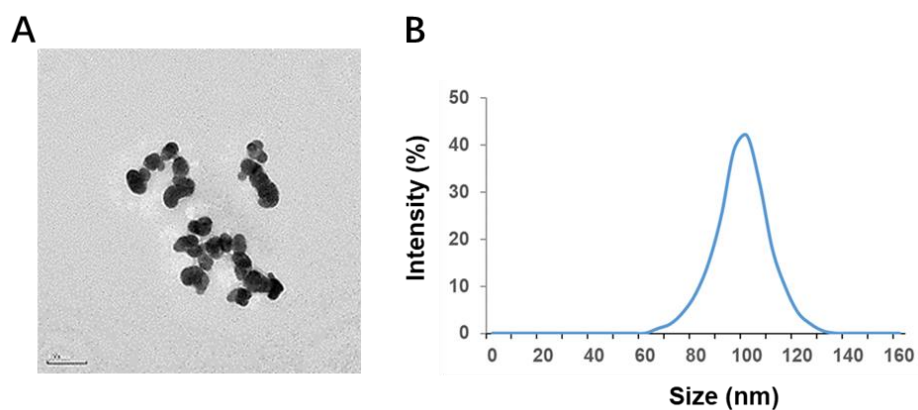


Figure S1. The characterization of SeNPs. (A) The TEM picture of SeNPs; (B) Particle size distribution of SeNPs.

Figure S2

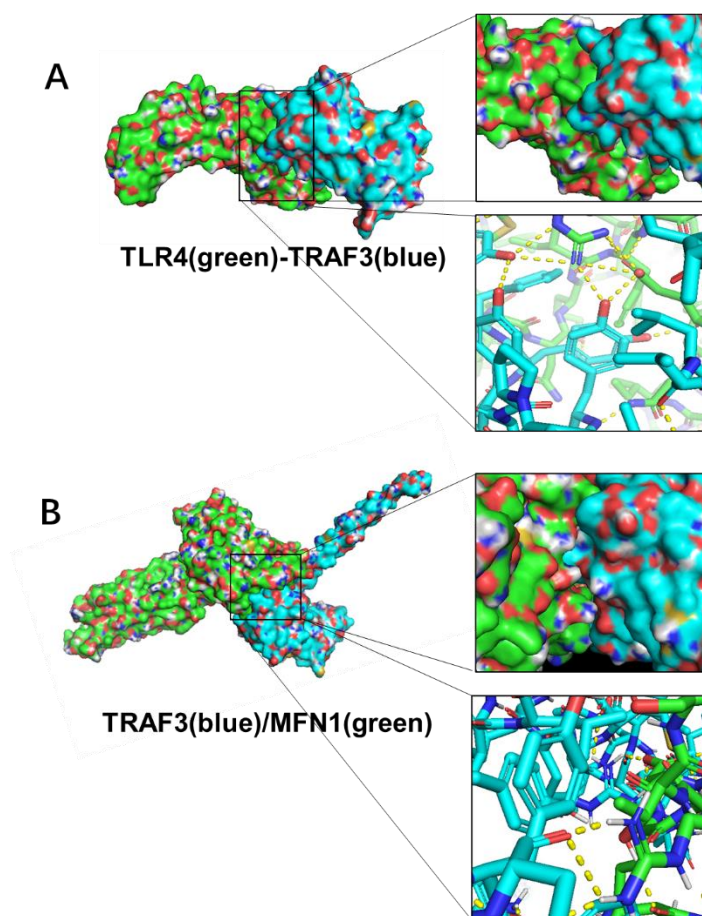


Figure S2. The molecular docking results of TLR4/TRAF3 (A) and TLR4/TRAF3 (B)

(<https://cluspro.org/>).

Figure S3. The uncropped whole membrane western blot for Figure 4J, Figure 5G, Figure 6F, and Figure 6G.

Figure. 4J

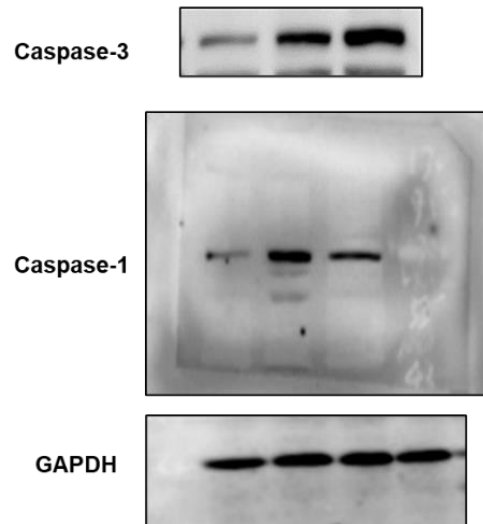


Figure. 5G

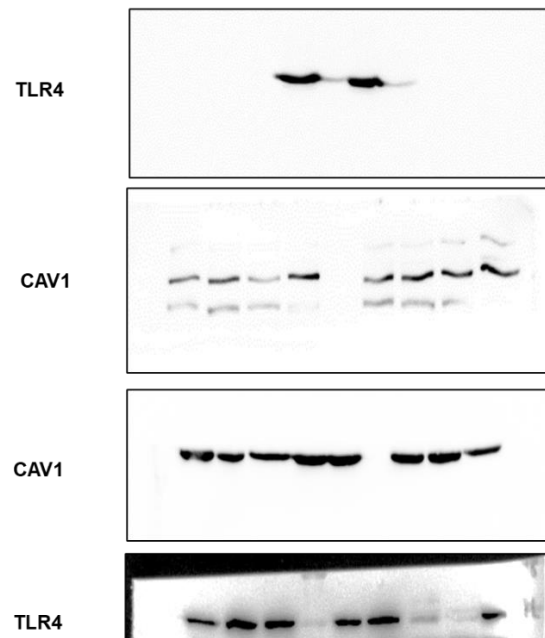


Figure. 6F

