

## Supplementary Information

A skeleton muscle model using GelMA-Based cell-aligned bioink processed with an electric-field assisted 3D/4D bioprinting

Gi Hoon Yang,<sup>1,a</sup> Wonjin Kim,<sup>1,a</sup> Juyeon Kim,<sup>1</sup> GeunHyung Kim<sup>1,2\*</sup>

<sup>1</sup>Department of Biomechatronic Engineering, College of Biotechnology and Bioengineering, Sungkyunkwan University, Suwon 16419, Republic of Korea

<sup>2</sup>Biomedical Institute for Convergence at SKKU, Sungkyunkwan University, Suwon 16419, Republic of Korea

**Running title: Bioprinted in vitro muscle model**

<sup>a</sup>The authors contributed equally.

\*Corresponding author

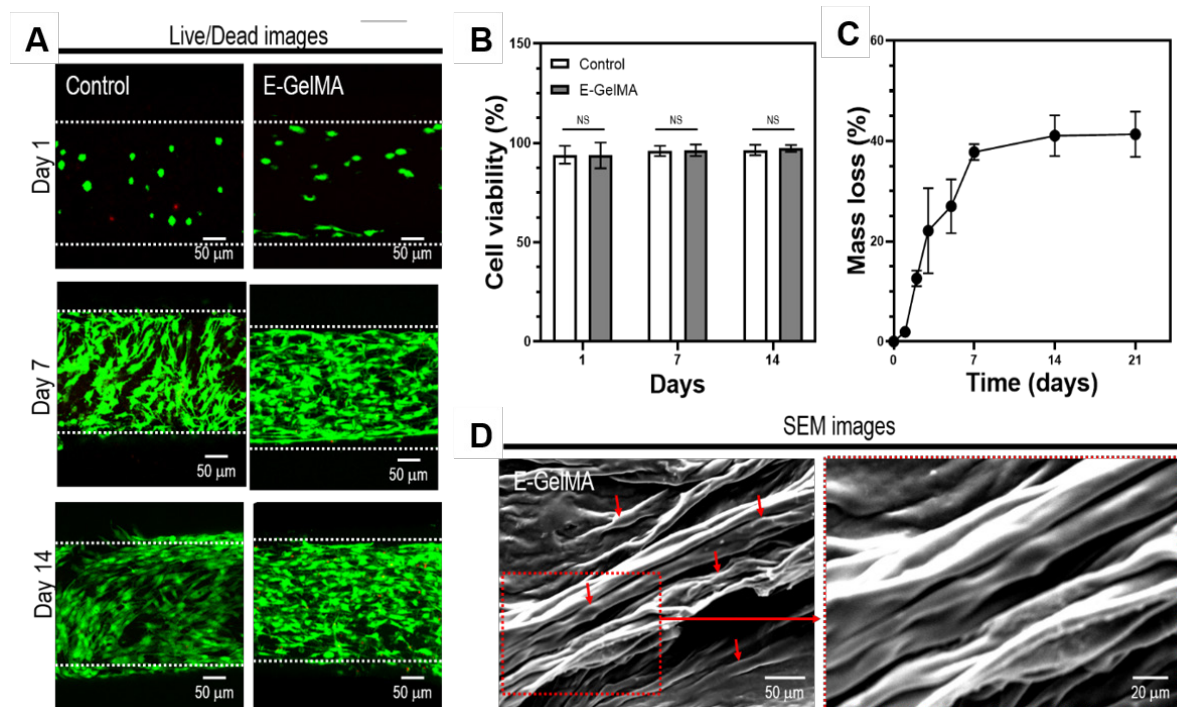
GeunHyung Kim, Ph.D

Professor

Department of Biomechatronic Engineering, College of Biotechnology and Bioengineering, Sungkyunkwan University (SKKU), Suwon, South Korea.

Email: gkimbmc@skku.edu, Tel.: +82-31-290-7828.

## Supplementary figure



**Figure S1.** (A) Live/dead images and (B) Cell viability results of C2C12 cells cultured on the control and E-GelMA at 1, 7, and 14 days of culture. (C) Degradation of the E-GelMA. (D) SEM images of E-GelMA at 21 days of culture.