

**Figure S1 Effects of ACT001 on cell cycle in NHA, GSC 1123, or R39 cells**

NHA, GSC 1123 or R39 cells were treated with 0, 5, or 10  $\mu\text{M}$  ACT001 for 24 h. Quantitative analysis of the cell cycle distributions were performed. Data represent the mean  $\pm$  SEM of replicates from 3 independent experiments, by two-way ANOVA.

## Supplementary Figure 2 Original WB

### Figure S2D

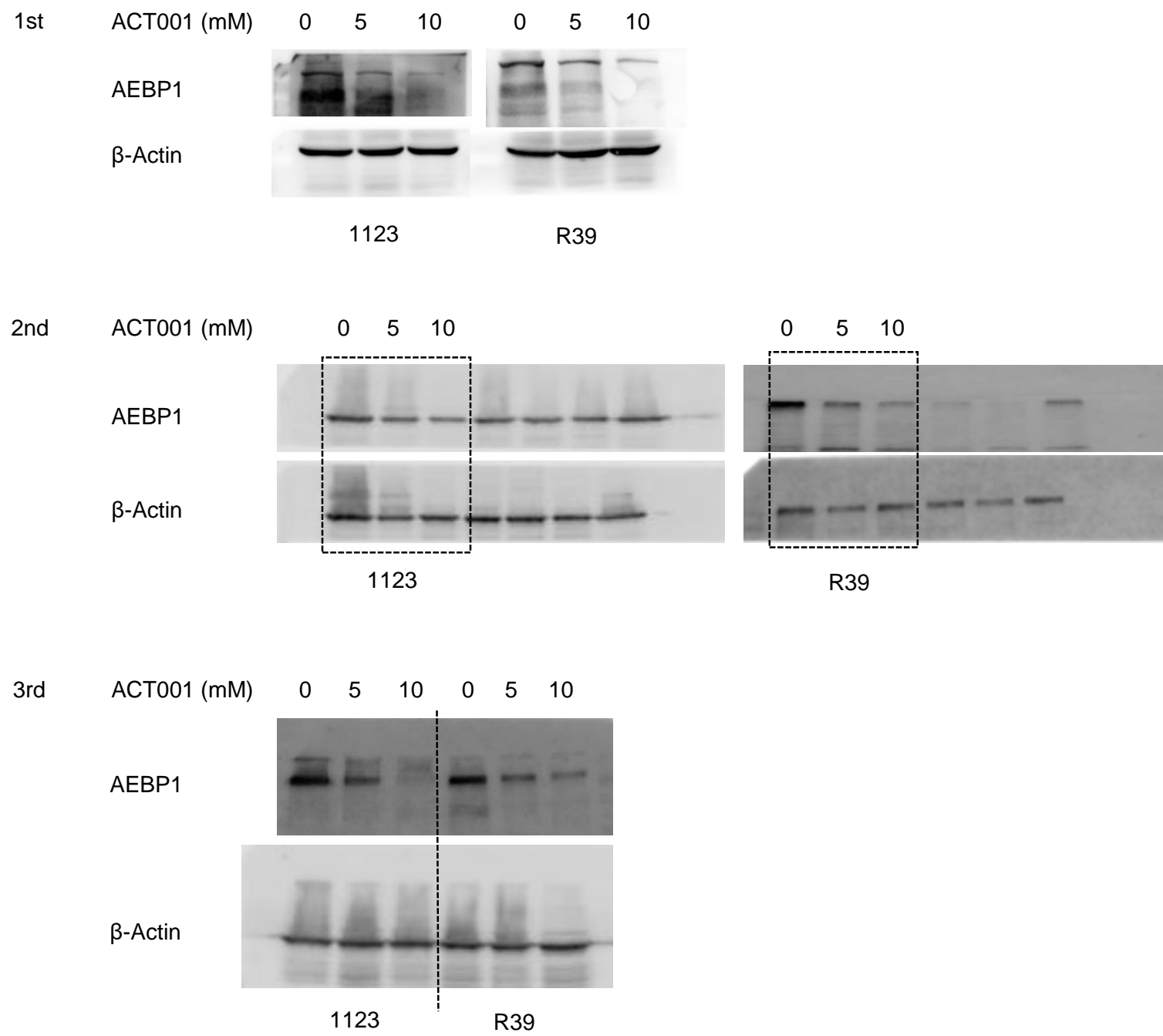


Figure S3A

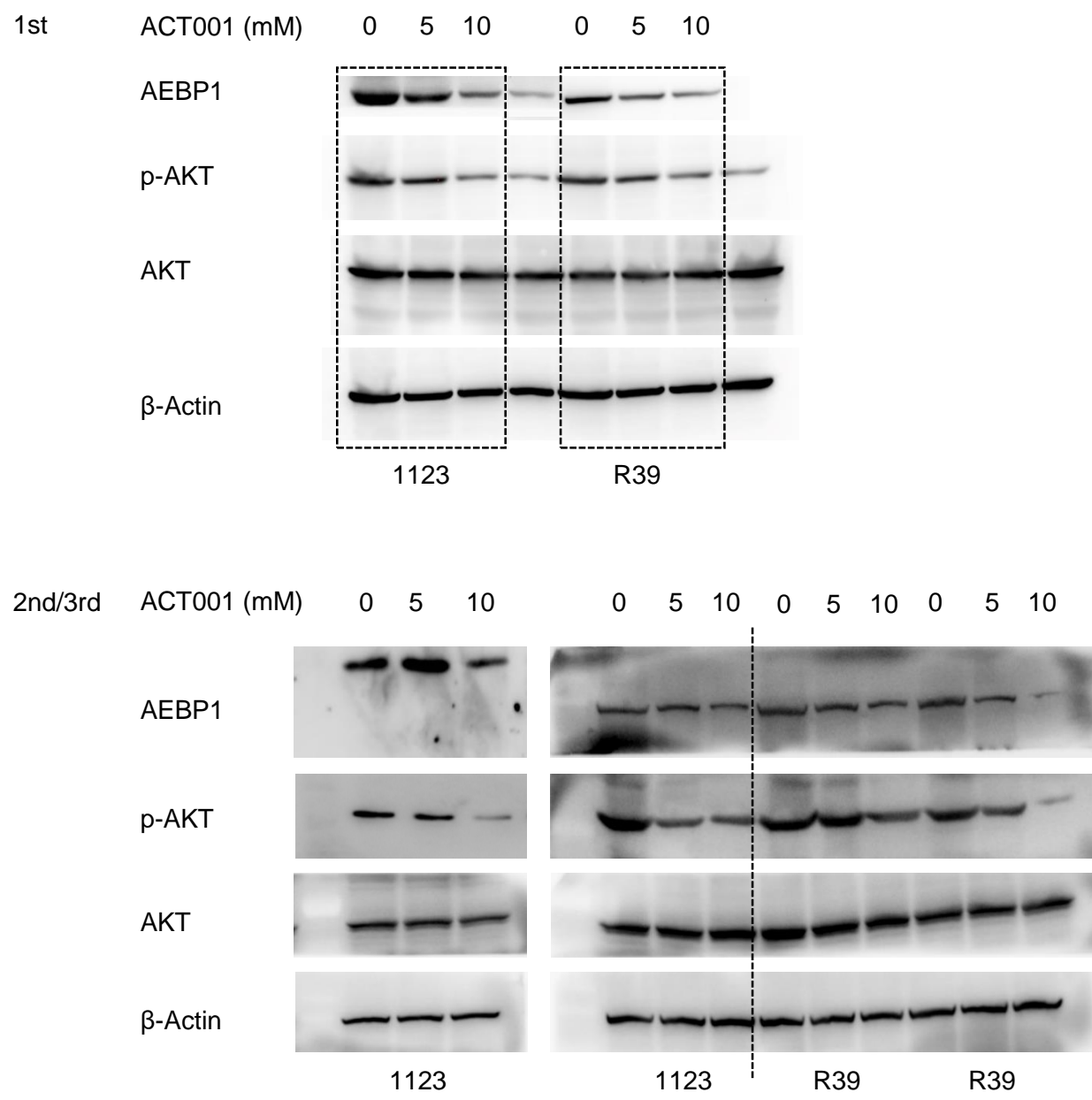


Figure S5A

