

	FORWARD 5'-3'	REVERSE
ALDH1A1	TGTTAGCTGATGGCCGACTTG	TTCTTAGCCCGCTCAACACT
ALDH1A2	CCATTGGAGTGTGTGGACAG	GATGAGGGCTCCCATGTAGA
ALDH1A3	TCTCGACAAAGCCCTGAAGT	GTCCGATGTTTGAGGAAGGA
YWHAZ	ACTTTTGGTACATTGTGGCTTCAA	CCGCCAGGACAAACCAGTAT

Table S1. qPCR primers.

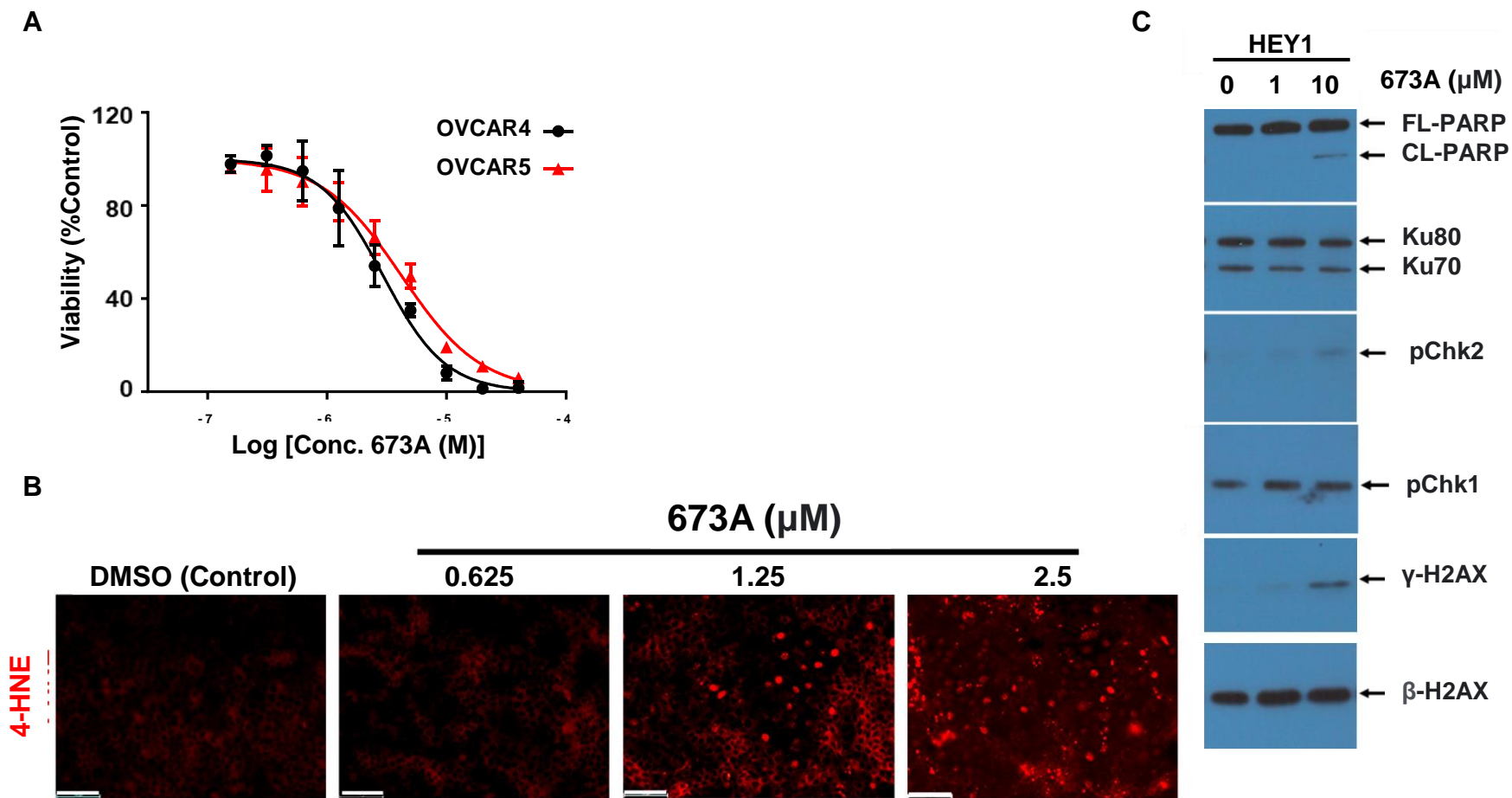


Figure S1. 673A increases 4HNE accumulation and DNA damage. A) OVCAR4 and OVCAR5 cell viability curves. B) IF showing a dose dependent increase in nuclear 4-HNE following treatment with 0.625, 1.25 and 2.5 μM 673A. C) Western Blot of the indicated proteins in HEY1 cells treated with 0, 1 μM or 10 μM 673A.