

Supplement figure legends

sFig. 1. ChIP-seq of NRP1 gene in WT and *mdig* KO MDA-MB-231 breast cancer cell line.

Red arrows point to the enhanced enrichment of H3K9me3 and H4K20me3 in *mdig* KO cells.

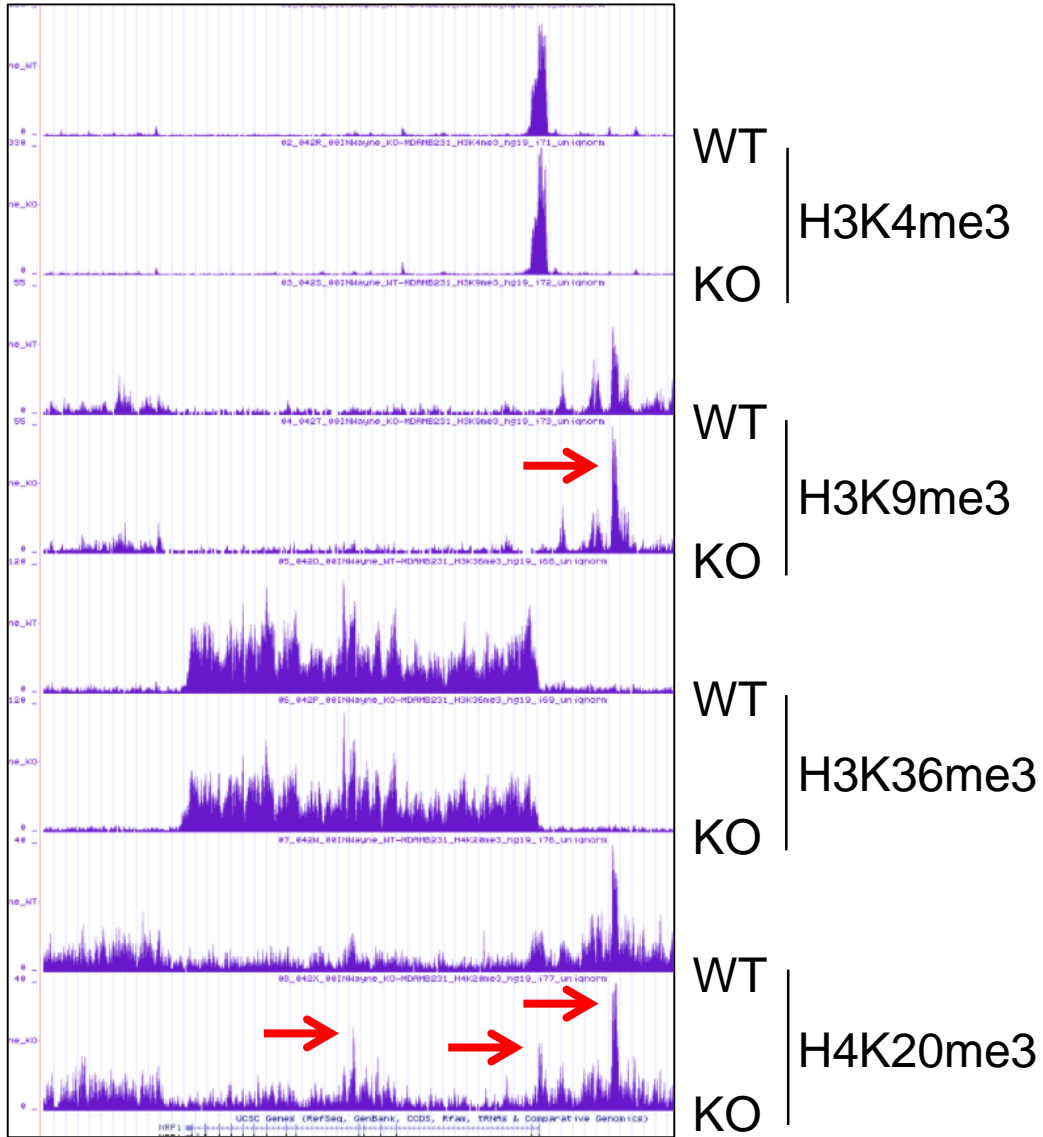
sFig. 2. Quantitative proteomics analysis for the protein levels of NRP1 in 5 WT (red) and

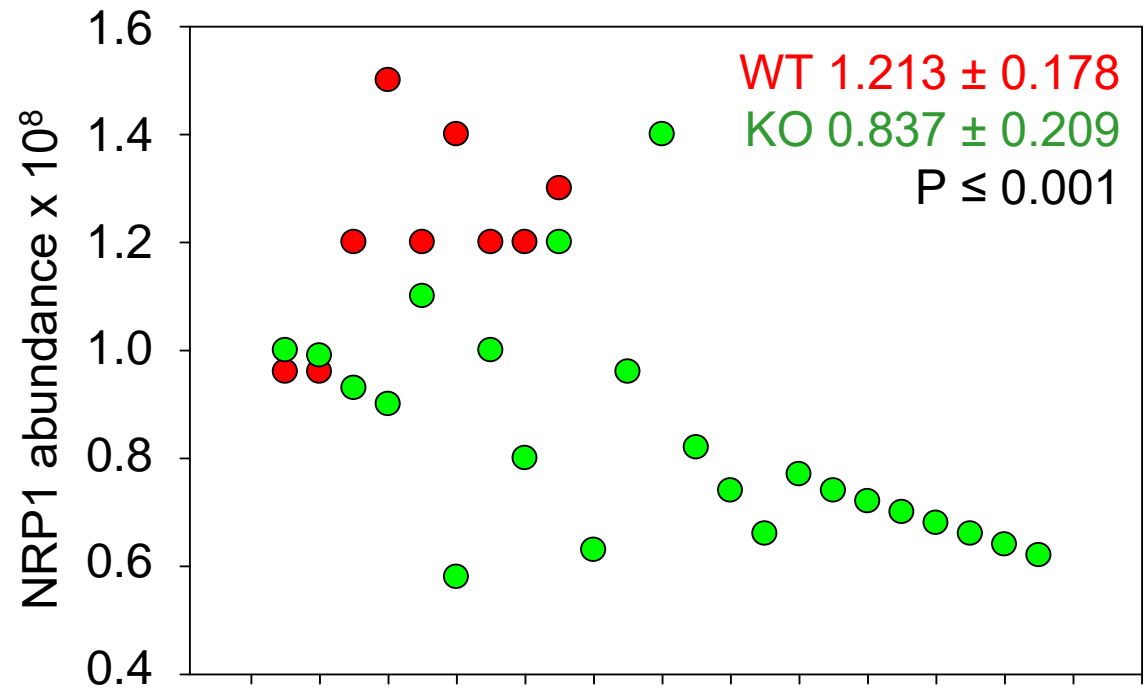
11 *mdig* KO (green) MDA-MB-231 cell clones. Duplicated samples for each clone were subjected to quantitative proteomics analysis. One sample in each group was discarded in this analysis due to poor quality from sample preparation and processing.

sFig. 3. ChIP-seq of NRP1 gene in WT and *mdig* KO A549 cells. Red arrow points to the

elevated enrichment of H4K20me3 on the NRP1 gene in *mdig* KO A549 cells.

NRP1 MDA-MB-231





NRP1 A549

