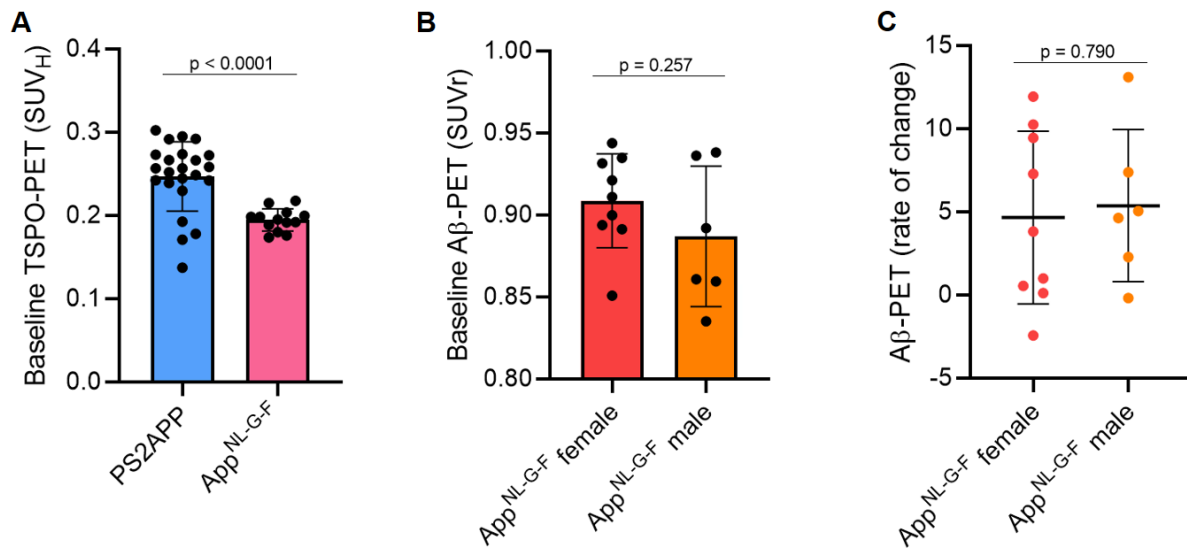


1 **Supplement**

2 Supplemental Figure 1



3

4 **Figure S1 - Specific comparisons of TSPO-PET and Aβ-PET signals:** (A) Comparison of baseline
5 levels of microglial activation between PS2APP and to *App*^{NL-G-F} mice. (B, C) Comparison of baseline
6 Aβ-PET quantification and the Aβ-PET rate of change between therapy naive female and male *App*^{NL-}
7 *G-F* mice. P-values derive from an unpaired Students *t*-test.

8