

## Supporting Information

### Raman spectroscopy reveals phenotype switches in breast cancer metastasis

Santosh Kumar Paidi,<sup>1,#,&</sup> Joel Rodriguez Troncoso,<sup>2,#</sup> Mason G. Harper,<sup>3</sup> Zhenhui Liu,<sup>1</sup> Khue G. Nguyen,<sup>4</sup> Sruthi Ravindranathan,<sup>5</sup> Lisa Rebello,<sup>6</sup> David E. Lee,<sup>7,\$</sup> Jesse D. Ivers,<sup>2</sup> David A. Zaharoff,<sup>4</sup> Narasimhan Rajaram,<sup>2,8,\*</sup> Ishan Barman<sup>1,9,10,\*</sup>

#### Affiliations:

<sup>1</sup>Department of Mechanical Engineering, Johns Hopkins University, Baltimore, MD, 21218

<sup>2</sup>Department of Biomedical Engineering, University of Arkansas, Fayetteville, AR 72701

<sup>3</sup>University of Arkansas for Medical Sciences, Little Rock, AR, 72205

<sup>4</sup>Joint Department of Biomedical Engineering, University of North Carolina and North Carolina State University, Raleigh, NC, 27695

<sup>5</sup>Department of Hematology and Oncology, Emory University, Atlanta, GA, 30322

<sup>6</sup>Cell and Molecular Biology Program, University of Arkansas, Fayetteville, AR 72701

<sup>7</sup>Department of Health, Human Performance, and Recreation, University of Arkansas, Fayetteville, AR, 72701

<sup>8</sup>Winthrop P. Rockefeller Cancer Institute, University of Arkansas for Medical Sciences, Little Rock, AR, 72205

<sup>9</sup>The Russell H. Morgan Department of Radiology and Radiological Science, The Johns Hopkins University School of Medicine, Baltimore, MD, 21205

<sup>10</sup>Department of Oncology, Johns Hopkins University, Baltimore, MD, 21287

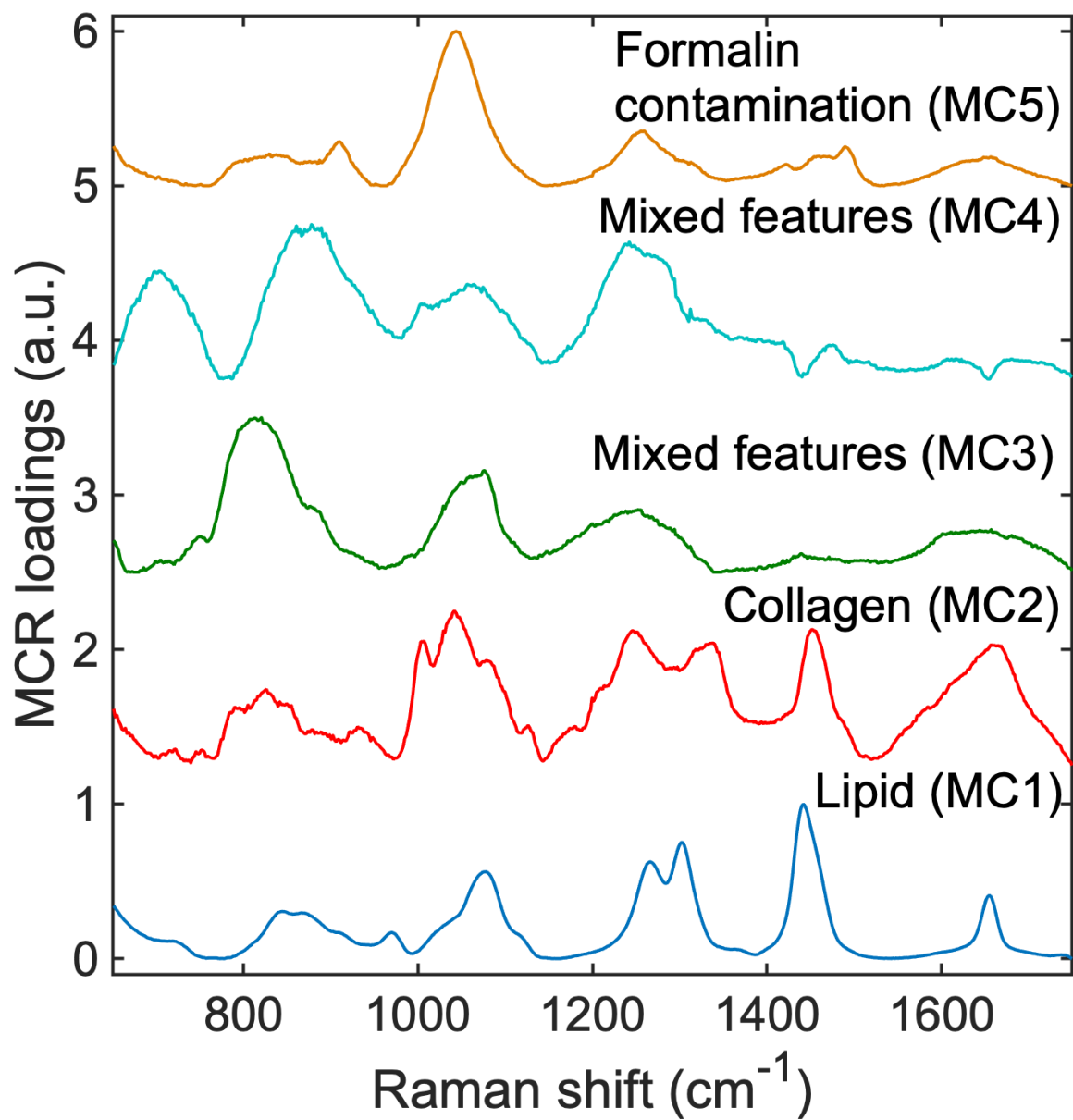
#Both authors contributed equally to this work.

& Current affiliation – School of Optometry, University of California, Berkeley, CA, 94720

\$ Current affiliation – Duke Molecular Physiological Institute, Duke University, 300 N. Duke St., Durham, NC 27701

\*Corresponding authors: Ishan Barman ([ibarman@jhu.edu](mailto:ibarman@jhu.edu)) and Narasimhan Rajaram ([nrajaram@uark.edu](mailto:nrajaram@uark.edu))

The authors disclose no potential conflicts of interest.



**Figure S1.** The complete set of MCR-ALS component loadings are provided for the entire Raman spectral dataset.

**Table S1.** Table of MCR-ALS component spectral peak assignments

Observed Raman peaks in the MCR loadings (cm <sup>-1</sup> )					Raman band assignment from literature
MC1	MC2	MC3	MC4	MC5	
			703		Cholesterol
		813			O-P-O stretching in DNA and RNA; quartz contribution
	851				C-C stretch of proline in collagen
			878		C-C stretching, hydroxyproline of collagen
				910	Formalin contamination during tissue fixation
	931				C-C vibration in collagen backbone
	1003		1003		Phenylalanine of collagen
	1042				Proline in collagen
				1044	Formalin contamination during tissue fixation
			1063		Skeletal C-C stretch of lipids
		1076			PO <sub>2</sub> <sup>-</sup> symmetric stretching in DNA
1078					C-C stretch
	1082				Carbohydrate residues of collagen
		1239	1242		PO <sub>2</sub> <sup>-</sup> asymmetric stretching in DNA
	1251				Amide III in collagen
				1256	Formalin contamination during tissue fixation
1266					CH <sub>2</sub> in-plane deformation (Triglyceride)
1302					CH vibration (Triglyceride)
	1337				CH <sub>3</sub> CH <sub>2</sub> wagging modes of collagen
1442					CH <sub>2</sub> bending mode (Triglyceride)
	1451				CH <sub>2</sub> bending mode in collagen
				1491	Formalin contamination during tissue fixation
1654					C=C lipid stretch
	1657				α-helical structure of amide I in collagen

**Table S2.** Assignment for the top spectral predictors derived from random forest analysis

<b>Observed Raman peaks</b>	<b>Raman band assignment from literature</b>
670	C-S stretching mode of cystine (collagen type I)
862	Tyrosine (collagen)
962	Symmetric stretching vibration of PO <sub>4</sub> <sup>3-</sup>
1042	Proline (collagen)
1098	C-N stretch (lipid)
1213	C-N stretch
1254	Amide III
1330	Collagen
1372	Ring breathing modes of DNA/RNA bases
1432	CH <sub>2</sub> deformation (lipid)
1462	CH <sub>2</sub> /CH <sub>3</sub> deformation (lipid and collagen)
1566	Tryptophan
1664	Amide I (collagen)